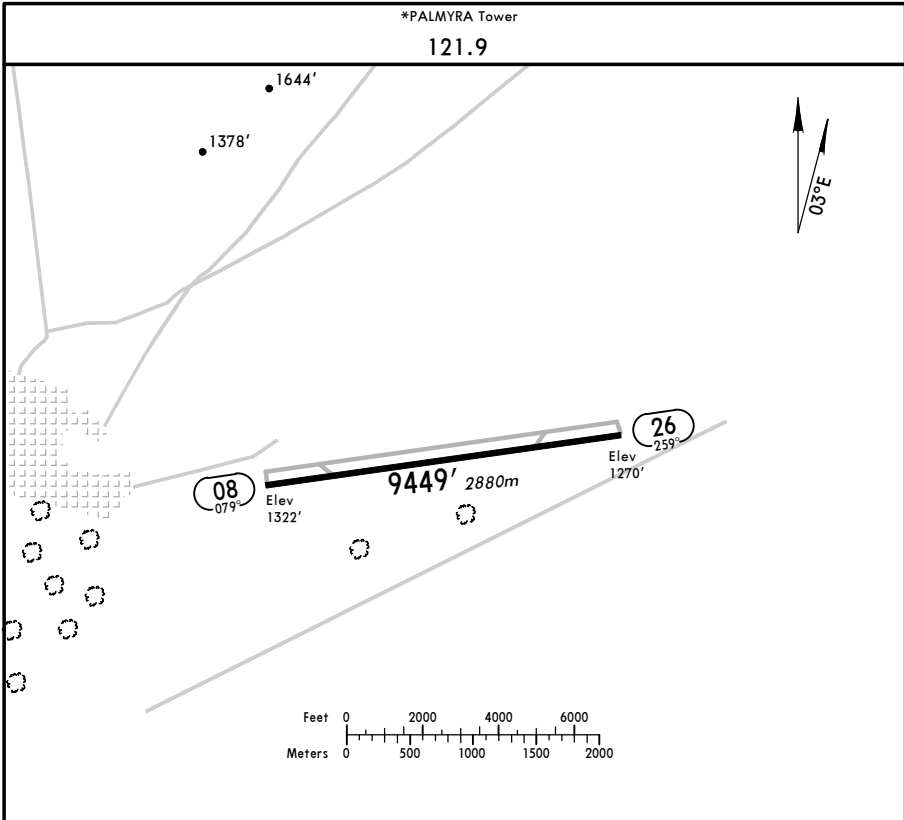


OSPR/PMS
 Apt Elev **1322'**
 N54 33.0 E038 18.0

JEPPESEN
 3 NOV 06 **(10-9)**

PALMYRA, SYRIA
PALMYRA



ADDITIONAL RUNWAY INFORMATION

RWY	LANDING BEYOND	USABLE LENGTHS		TAKE-OFF	WIDTH
		Threshold	Glide Slope		
08 26					148' 45m

FOR FLIGHT SIMULATION USE ONLY!

OSPR/PMS
PALMYRA

JEPPESEN
3 NOV 06 (19-10)

PALMYRA, SYRIA
VICINITY CHART

*PALMYRA Tower

121.9

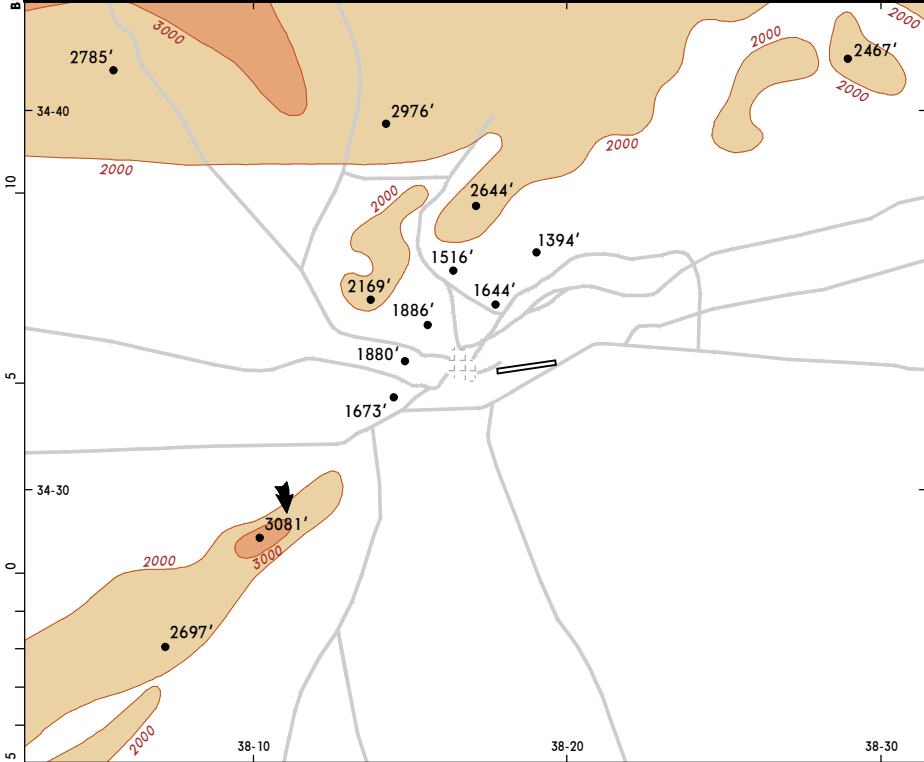
Apt Elev 1322'

Alt Set: MB

Apt Elev: 47 MB

Trans level: By ATC

Trana alt: By ATC



No instrument approach procedure
established for this airport.

FOR FLIGHT SIMULATION USE ONLY!