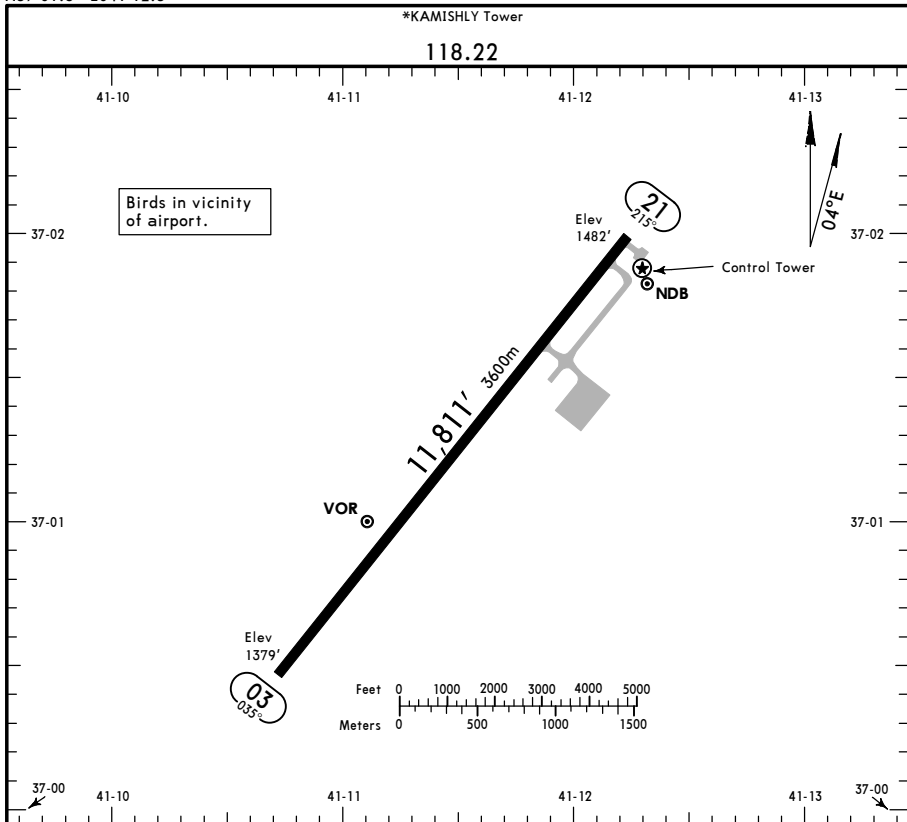


OSKL/KAC
 Apt Elev **1430'**
 N37 01.8 E041 12.3

JEPPESEN
 15 MAY 15 (10-9)

KAMISHLY, SYRIA
KAMISHLY



ADDITIONAL RUNWAY INFORMATION

RWY	HIRL	CL (white)	① HIALS-II	TDZ	PAPI-L	USABLE LENGTHS			WIDTH
						Threshold	Landing Beyond	Glide Slope	
03									197'
21									60m

① Configuration unknown.

TAKE-OFF

AIR CARRIER (JAA)
All Rwys

LVP must be in force

	RL & CL	RCLM (DAY only) or RL	RCLM (DAY only) or RL
A			
B	200m	250m	400m
C			
D	250m	300m	

FOR FLIGHT SIMULATION USE ONLY!

OSKL/KAC



Standard
KAMISHLY, SYRIA
KAMISHLY

STRAIGHT-IN RWY		A	B	C	D
03	VOR ①	1720'(341') R1500m	1720'(341') R1500m	1750'(371') R1700m	1750'(371') R1700m
	NDB	1900'(521') C2600m	1900'(521') C2600m	1900'(521') C2800m	1900'(521') C2800m

① Continuous Descent Final Approach.

TAKE-OFF RWY 03, 21		
LVP must be in force		
	RCLM (DAY only) or RL	RCLM (DAY only) or RL
A		NIL (DAY only)
B	250m	400m
C		
D	300m	500m

FOR FLIGHT SIMULATION USE ONLY!

OSKL/KAC
KAMISHLY

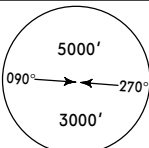
JEPPESSEN
29 OCT 10 **(13-1)**

KAMISHLY, SYRIA
VOR DME Rwy 03

Approach Control through Tower
*KAMISHLY Tower
118.22

BRIEFING STRIP™

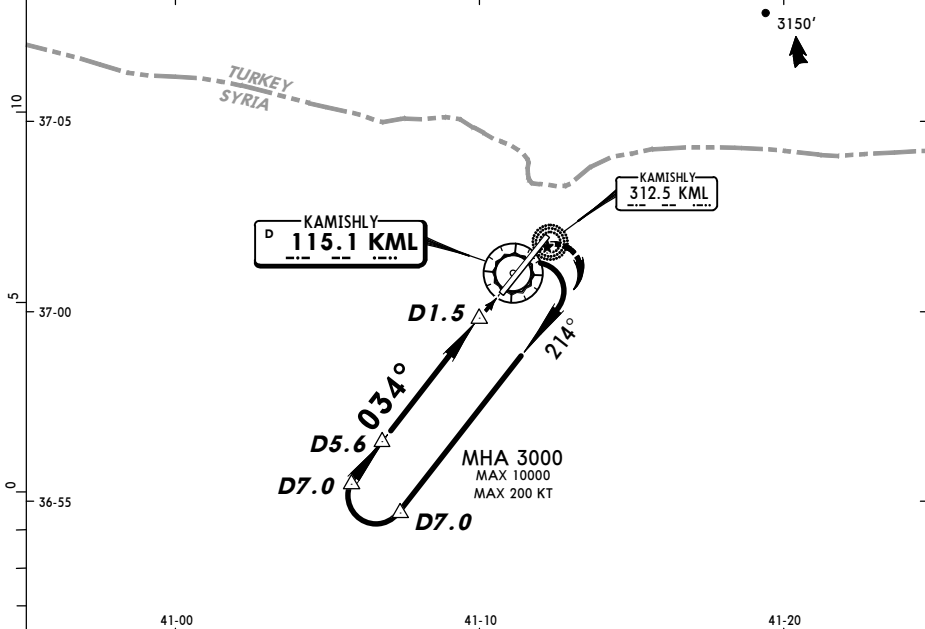
VOR KML 115.1	Final Apch Crs 034°	Minimum Alt D5.6 3000' (1621')	MDA(H) Refer to Minimums	Apt Elev 1430' RWY1379'
----------------------------	----------------------------------	--	--------------------------------	--



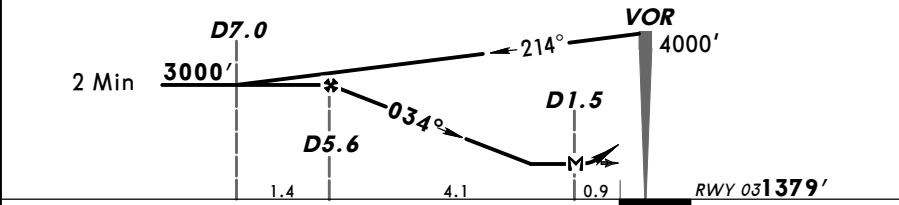
MISSED APCH: Passing VOR climbing turn RIGHT in holding pattern to 3000' and as directed.

Alt Set: MB Rwy Elev: 50 MB Trans level: FL 150 Trans alt: 13000'
Procedure restricted to MAX 200 KT.

MSA KML VOR



KML DME	4.0	3.0	2.0
ALTITUDE	2500'	2190'	1870'



Gnd speed-Kts	70	90	100	120	140	160
Descent angle	3.00°	372	478	531	637	849
MAP at D1.5						

HIALS II PAPI-L

KML **115.1**

3000' in **HOLDING PATTERN**

RT

STRAIGHT-IN LANDING RWY 03

MDA(H) AB: **1720' (341')** CD: **1750' (371')**

ALS out

PANS OPS

A	
B	1600m
C	
D	2000m

FOR FLIGHT SIMULATION USE ONLY!

OSKL/KAC
KAMISHLY

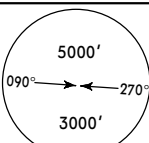
JEPPESSEN
29 OCT 10 **(16-1)**

KAMISHLY, SYRIA
NDB Rwy 03

Approach Control through Tower
*KAMISHLY Tower
118.22

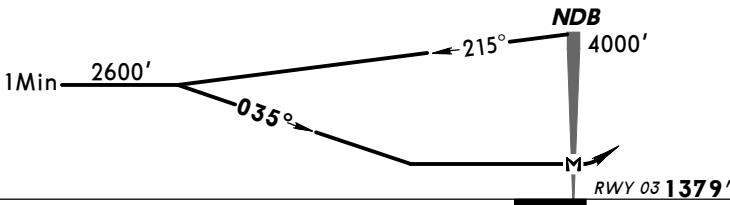
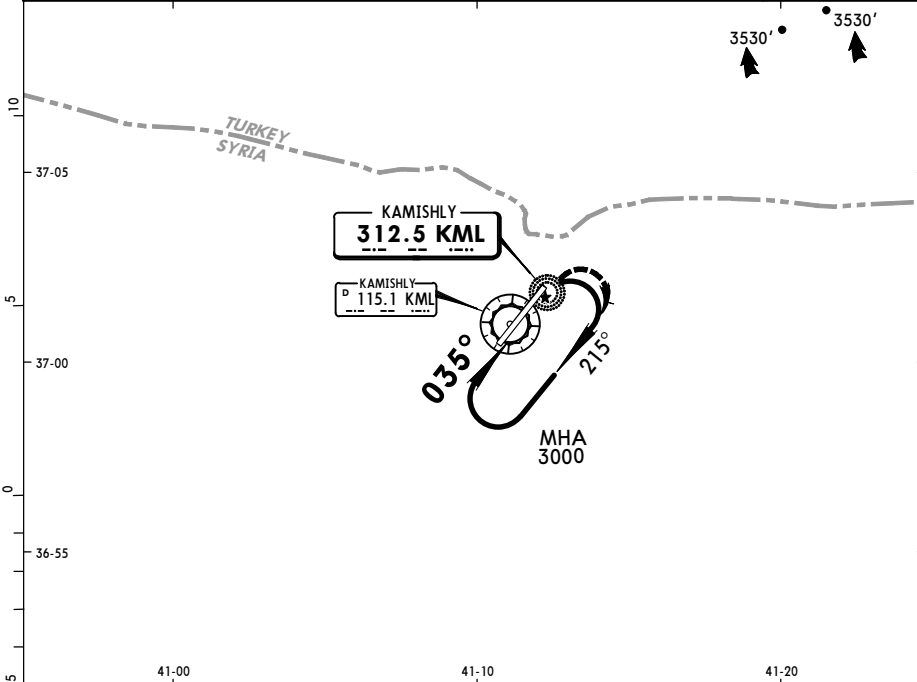
BRIEFING STRIP™

<i>NDB</i> KML 312.5	<i>Final</i> <i>Apch Crs</i> 035°	<i>Minimum Alt</i> No FAF	<i>MDA(H)</i> 1900' (521')	<i>Apt Elev</i> 1430' RWY1379'
-----------------------------------	--	------------------------------	--------------------------------------	---



MISSED APCH: Climbing turn RIGHT in holding pattern to 3000' and as directed.

Alt Set: MB Rwy Elev: 50 MB Trans level: FL 150 Trans alt: 13000' *MSA KML NDB*



MAP at NDB				HIALS II PAPI-L	3000' in RT	HOLDING PATTERN
------------	--	--	--	--------------------	--------------------------	--------------------

STRAIGHT-IN LANDING RWY 03

MDA(H) **1900' (521')**

ALS out

PANS OPS

A	1600m	
B		
C	2400m	
D	2800m	

FOR FLIGHT SIMULATION USE ONLY!