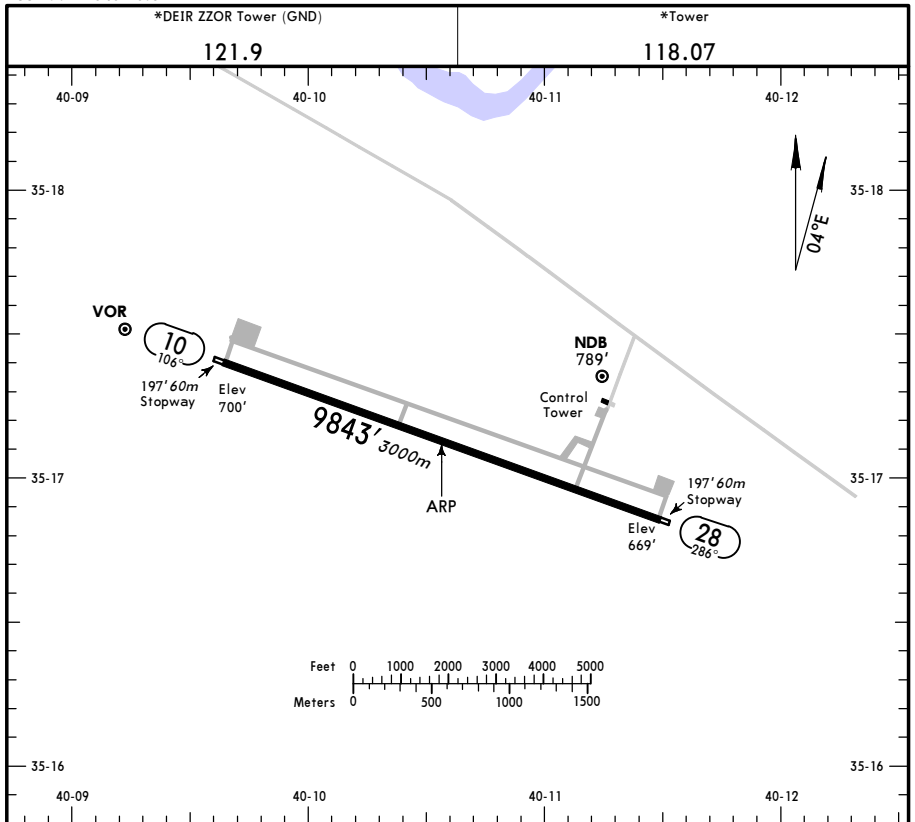


OSDZ/DEZ
 Apt Elev **700'**
 N55 17.1 E040 10.6

JEPPesen
 24 FEB 12 **(10-9)**

DEIR ZZOR, SYRIA
 DEIR ZZOR



ADDITIONAL RUNWAY INFORMATION

RWY	HIRL	USABLE LENGTHS LANDING BEYOND			WIDTH
		Threshold	Glide Slope	TAKE-OFF	
10	HIRL				148'
28	HIRL ① HIALS PAPI-L				45m

① Configuration unknown.

TAKE-OFF

AIR CARRIER (JAA)
All Rwys

	LVP must be in force RCLM (DAY only) or RL	RCLM (DAY only) or RL
A	250m	400m
B		
C		
D		

FOR FLIGHT SIMULATION USE ONLY!

OSDZ/DEZ



Standard
DEIR ZZOR, SYRIA
 DEIR ZZOR

STRAIGHT-IN RWY		A	B	C	D
28	VOR ① ②	1200'(531') R1500m	1200'(531') R1500m	1200'(531') C2400m	1200'(531') C2400m
	NDB	1100'(431') C2200m	1100'(431') C2200m	1100'(431') C2400m	1100'(431') C2400m

- ① Continuous Descent Final Approach.
- ② Missed apch climb gradient mim 3.3%.

CIRCLE-TO-LAND	A	B	C	D
	NOT AUTHORIZED			

TAKE-OFF RWY 10, 28

LVP must be in force			
	RCLM (DAY only) or RL	RCLM (DAY only) or RL	NIL (DAY only)
A	250m	400m	500m
B			
C			
D	300m		

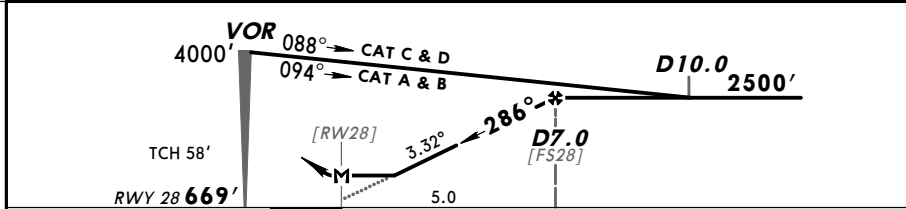
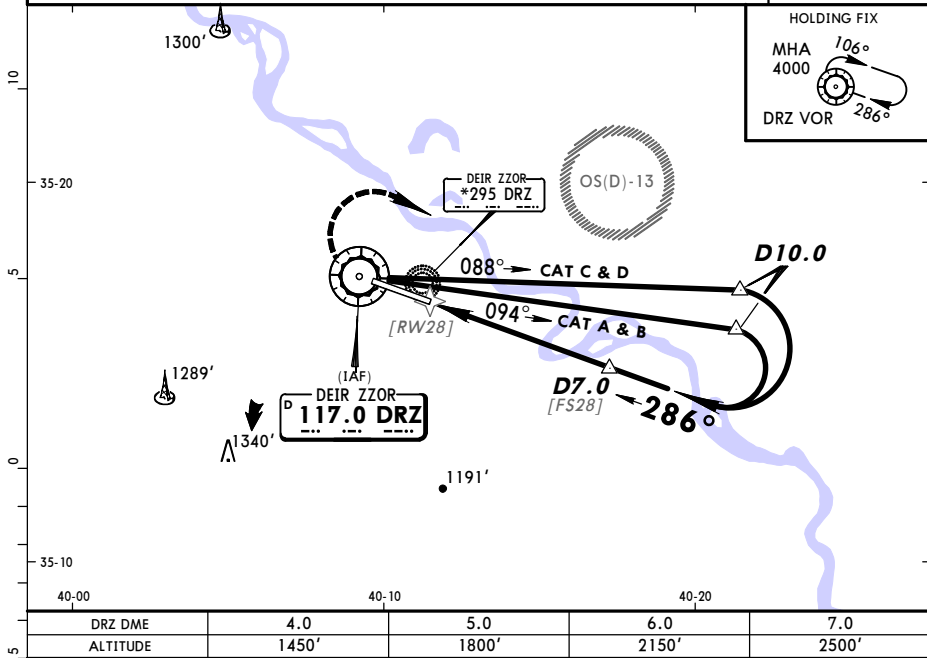
FOR FLIGHT SIMULATION USE ONLY!

OSDZ/DEZ
DEIR ZZOR

JEPPESSEN
24 FEB 12 **(13-1)**

DEIR ZZOR, SYRIA
MISSED APCH CLIMB GRADIENT MIM 3.3%
VOR Rwy 28

*DEIR ZZOR Tower				*Ground	
118.07				121.9	
VOR DRZ	Final Apch Crs	Minimum Alt D7.0	MDA(H)	Apt Elev	700'
117.0	286°	2500' (1831')	1200' (531')	RWY	669'
MISSED APCH: Climb STRAIGHT AHEAD. When reaching VOR turn RIGHT and climb in holding as directed. MAX 185 KT.					4000'
Alt Set: hPa Rwy Elev: 24 hPa Trans level: FL 150 Trans alt: 13000'					
1. DME required. 2. Procedure restricted to MAX 210 KT.					MSA ARP



Gnd Speed-Kts	70	90	100	120	140	160	HIALS PAPI-L	185 KT MAX	117.0 DRZ ↑	
Descent Angle	3.32°	4:11	5:29	5:87	7:05	8:22				9:40
FAF to MAP	5.0	4:17	3:20	3:00	2:30	2:09				1:53

STRAIGHT-IN LANDING RWY 28				CIRCLE-TO-LAND			
Missed apch climb gradient mim 3.3%							
MDA(H) 1200' (531')							
ALS out							

PANS OPS	A	2400m	A	NOT AUTHORIZED
	B		B	
	C		C	
	D		D	

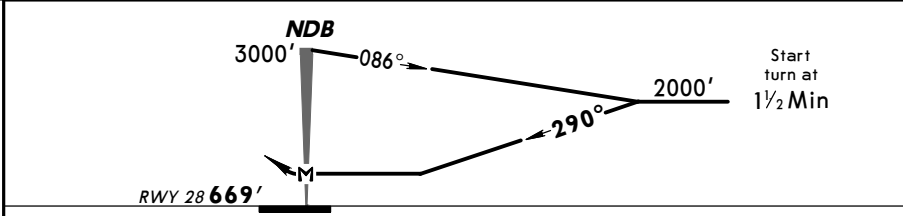
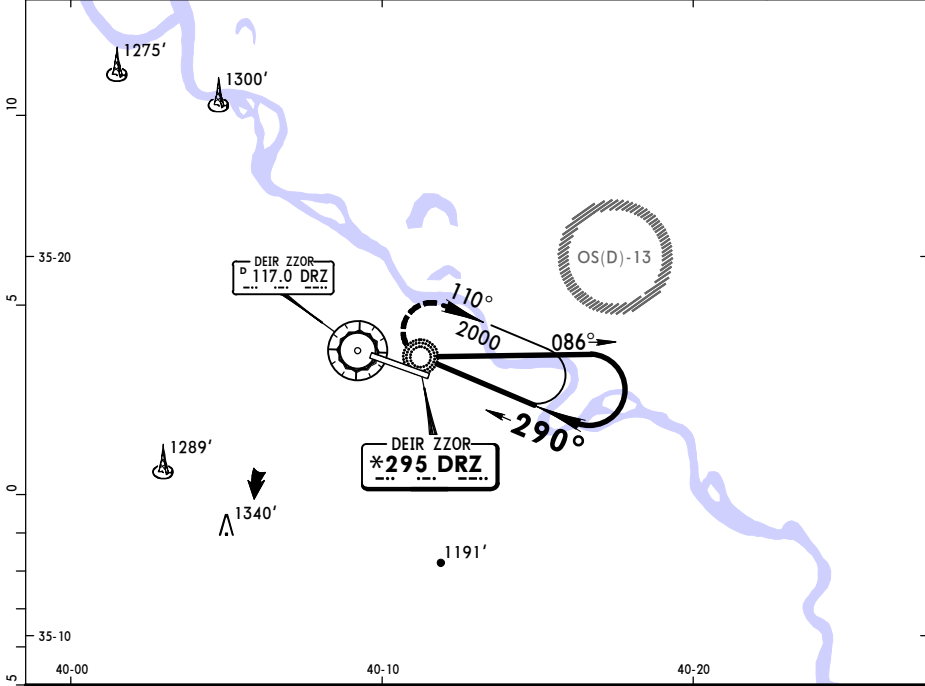
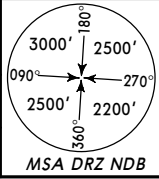
FOR FLIGHT SIMULATION USE ONLY!

OSDZ/DEZ
DEIR ZZOR

JEPPESSEN
24 FEB 12 **(16-1)**

DEIR ZZOR, SYRIA
NDB Rwy 28

*DEIR ZZOR Tower				*Ground	
118.07				121.9	
NDB DRZ *295	Final Apch Crs 290°	Minimum Alt No FAF	MDA(H) 1100' (431')	Apt Elev 700'	Rwy 669'
MISSED APCH: Turn RIGHT climbing in holding to 3000' and contact ATC.					
Alt Set: hPa		Rwy Elev: 24 hPa	Trans level: FL 150	Trans alt: 13000'	
Final approach based on MAX TAS 180 KT.					



MAP at NDB				HIALS PAPI-L	110°	3000'	in HOLDING
				RT	↑		

STRAIGHT-IN LANDING RWY 28			
MDA(H) 1100' (431')			
ALS out			
A	1600m		
B			
C	2000m		
D	2400m		

PANS OPS

CHANGES: Altimeter setting.

© JEPPESSEN, 1999, 2012. ALL RIGHTS RESERVED.

FOR FLIGHT SIMULATION USE ONLY!