

OSDI/DAM DAMASCUS INTL

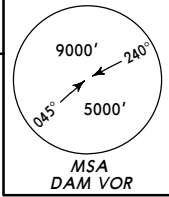
JEPPesen
24 FEB 12 (10-2)

DAMASCUS, SYRIA STAR

ATIS
128.225

Apt Elev
2020'

Alt Set: hPa Trans level: FL150 Trans alt: 13000'



BRAVO 1C [BRAVIC], LIMA 1C RWYS 05L/R, 23L/R ARRIVALS

LEBOR
N34 15.9 E036 35.0

At or above
FL240



184°

24
1513
LIMA 1C

[MALLA]
MALOULA
N33 51.2 E036 31.9

At or above
FL160



15

D30

ADRA
N33 36.8 E036 30.0

At or above
10000'



15

D1

142°

9

15

LIMA 1C



DAMASCUS
342 DAL

N33 29.3 E036 36.1

DAMASCUS
D (H) 116.0 DAM
N33 21.9 E036 28.1

At or above
5000'



R004°

R170°

20

RDJMA
N33 02.0 E036 32.0

At or above
14000'

19

D39

SWIDA
N32 43.0 E036 34.0

At or above
FL160

21

1513
BRAVO 1C

350°

BUSRA
N32 20.0 E036 37.0

At or above
FL150



21

1513
BRAVO 1C

350°



Approach and holding procedures (as depicted on approach chart) are to be carried out as exactly as possible due to limited airspace available. Pilots are requested to inform ATC if the approach and/or holding cannot be performed as required.

FOR FLIGHT SIMULATION USE ONLY!

FOR FLIGHT SIMULATION USE ONLY!

OSDI/DAM
DAMASCUS INTL

24 FEB 12 (10-2A)

DAMASCUS, SYRIA
STAR

ARTIS
128.225

Ap'l Elev
2020'

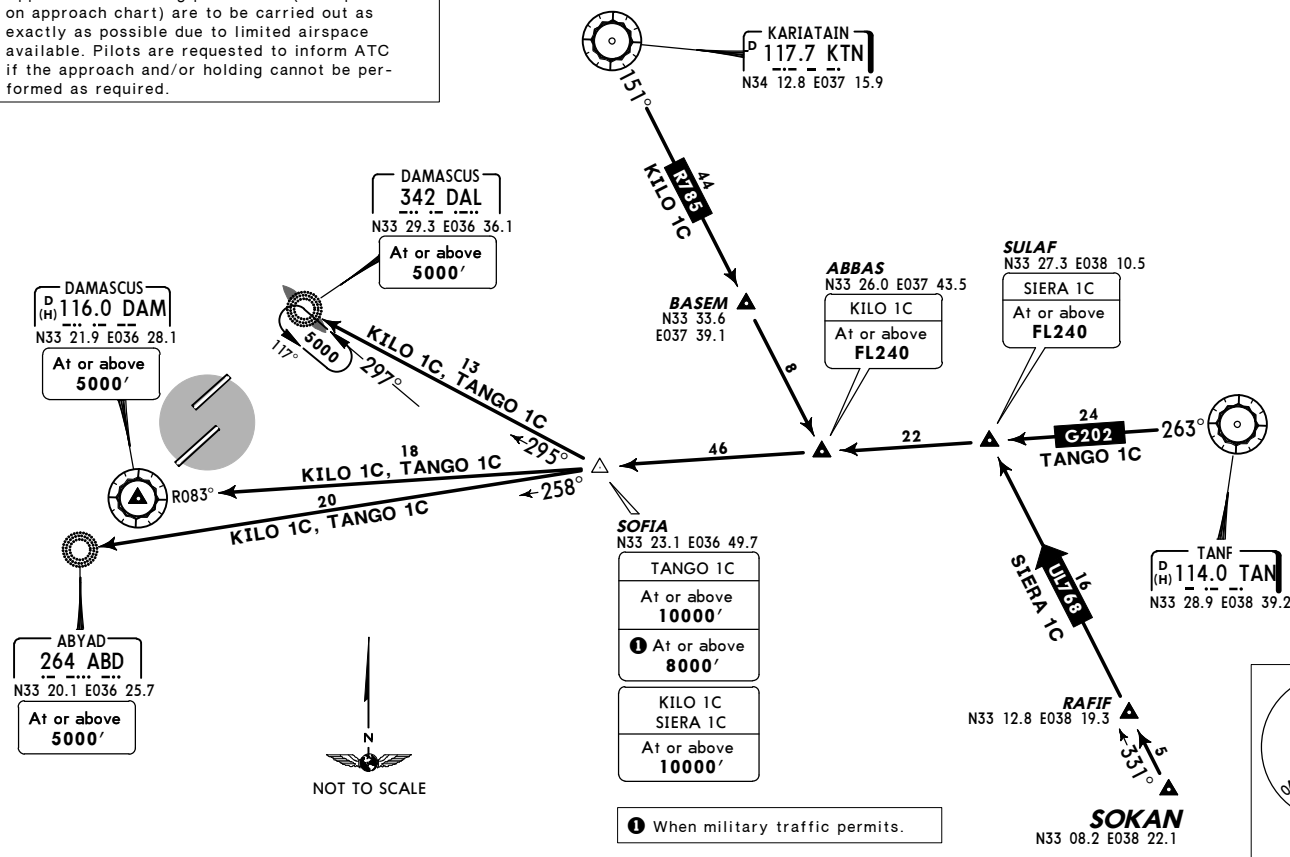
Alt Set: hPa

Trans level: FL150

Trans alt: 13000'

KILO 1C
SIERA 1C [SIER1C], TANGO 1C [TANG1C]
RWYS 05L/R, 23L/R ARRIVALS

Approach and holding procedures (as depicted on approach chart) are to be carried out as exactly as possible due to limited airspace available. Pilots are requested to inform ATC if the approach and/or holding cannot be performed as required.



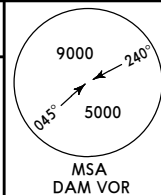
OSDI/DAM
DAMASCUS INTL

JEPPESEN
5 JUL 19 (10-3)

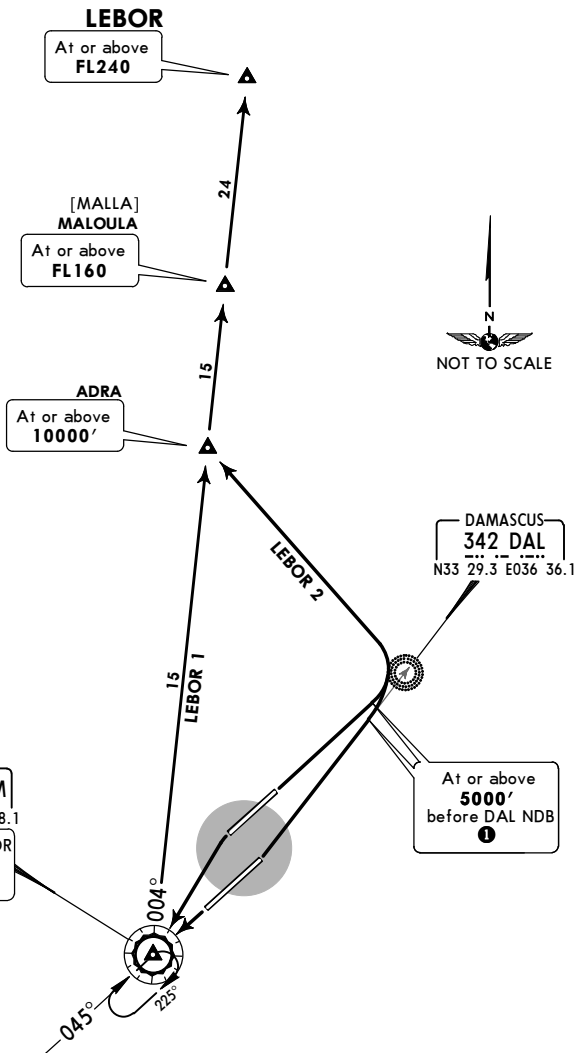
DAMASCUS, SYRIA
SID

Apt Elev
2020'

Trans level: FL150 Trans alt: 13000'



LEBOR 1 (LEB 1), LEBOR 2 (LEB 2)
DEPARTURES



SID	RWY	ROUTING
LEBOR 1	23L/R	To DAM VOR, climb in holding pattern to 5000' or above, turn RIGHT, DAM R-004 via ADRA and MALOULA to LEBOR.
LEBOR 2	05L/R	Towards DAL NDB, at or above 5000' before DAL NDB ❶, turn LEFT to ADRA, then via MALOULA to LEBOR.

❶ If unable to reach 5000' or above before DAL NDB, proceed to DAL NDB, turn RIGHT to DAL NDB to leave DAL NDB at or above 5000' to ADRA.

FOR FLIGHT SIMULATION USE ONLY!

OSDI/DAM
DAMASCUS INTL

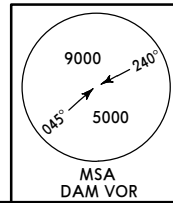
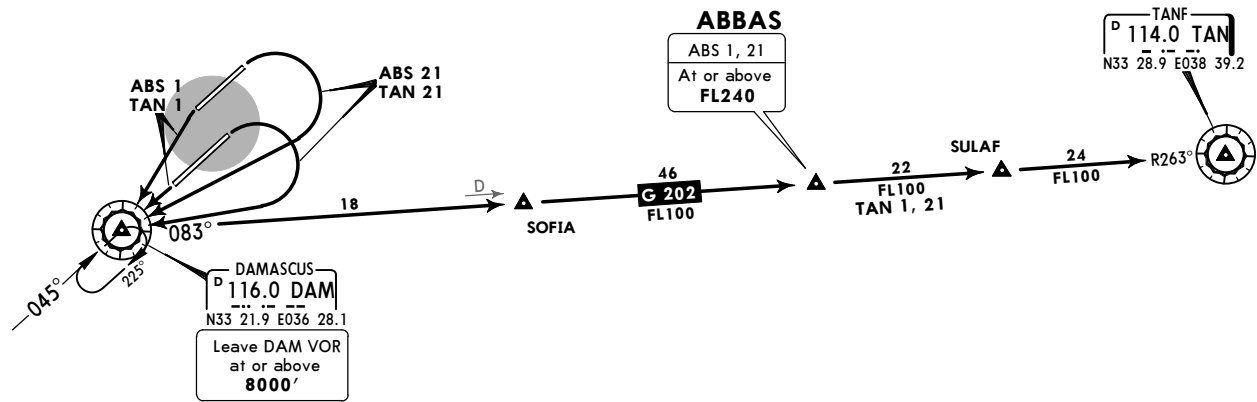
5 JUL 19 (10-3A)
JEPPesen

DAMASCUS, SYRIA
SID

Apt Elev
2020'

Trans level: FL150 Trans alt: 13000'
RWY 05L/R: Do not turn RIGHT before DER.

ABBAS 1 (ABS 1), ABBAS 21 (ABS 21)
TANF 1 (TAN 1), TANF 21 (TAN 21)
DEPARTURES



SID	RWY	ROUTING
ABS 1	23L/R	To DAM VOR, climb in holding pattern to 8000' or above, then via G-202 to ABBAS.
ABS 21	05L/R	Turn RIGHT to DAM VOR, climb in holding pattern to 8000' or above, then to ABBAS.
TAN 1	23L/R	To DAM VOR, climb in holding pattern to 8000' or above, intercept DAM R-083 to TAN VOR.
TAN 21	05L/R	Turn RIGHT to DAM VOR, climb in holding pattern to 8000' or above, intercept DAM R-083 to TAN VOR.

FOR FLIGHT SIMULATION USE ONLY!

CHANGES: General note added.

© JEPPESEN, 2005, 2019. ALL RIGHTS RESERVED.

FOR FLIGHT SIMULATION USE ONLY!

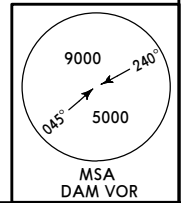
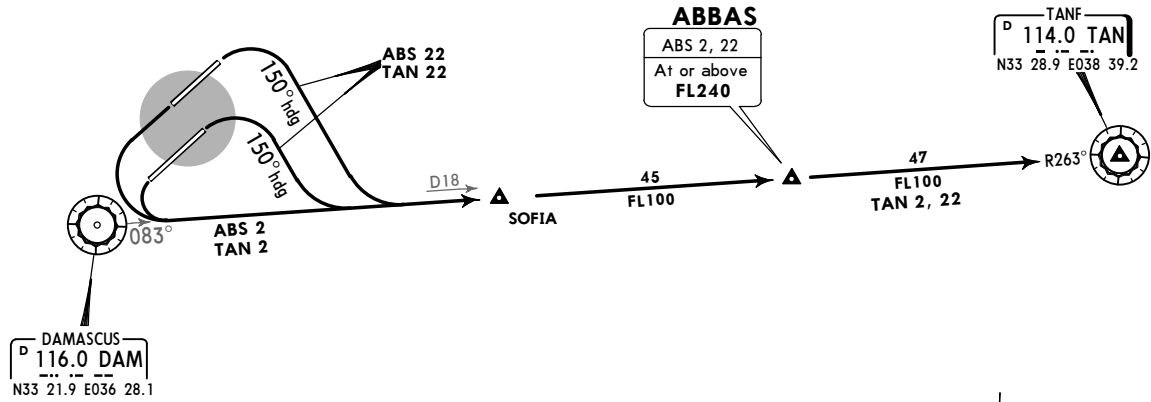
OSDI/DAM
DAMASCUS INTL

5 JUL 19 **10-3B**
JEPPESSEN

DAMASCUS, SYRIA
SID

Apt Elev 2020'
Trans level: FL150 Trans alt: 13000'
RWY 05L/R: Do not turn RIGHT before DER.

ABBAS 2 (ABS 2), ABBAS 22 (ABS 22)
TANF 2 (TAN 2), TANF 22 (TAN 22)
DEPARTURES



SID	RWY	ROUTING
ABS 2 ①	23L/R	Turn LEFT, intercept DAM R-083 to ABBAS.
ABS 22 ①	05L/R	Turn RIGHT, 150° heading, intercept DAM R-083 to ABBAS.
TAN 2 ①	23L/R	Turn LEFT, intercept DAM R-083 to TAN VOR.
TAN 22	05L/R	Turn RIGHT, 150° heading, intercept DAM R-083 to TAN VOR.

① Applicable when no altitude restrictions imposed.

OSDI/DAM
DAMASCUS INTL

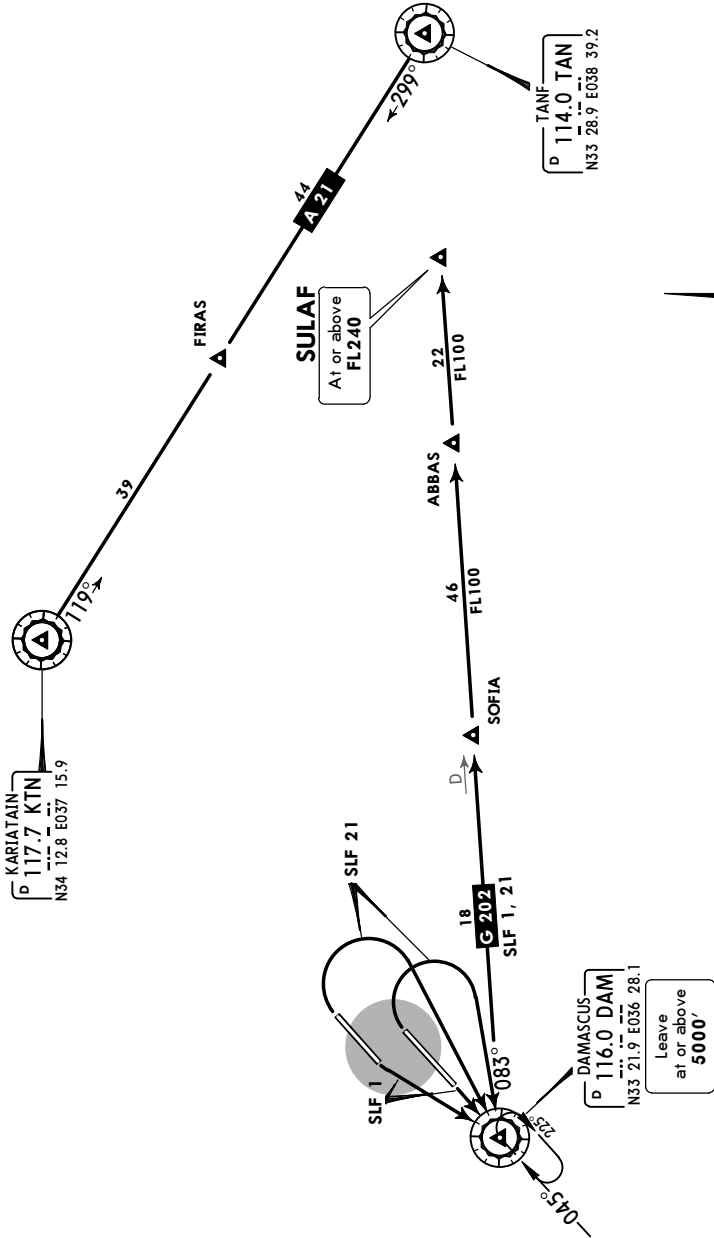
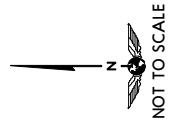
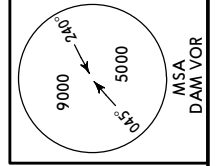
JEPPESSEN
5 JUL 19 (10-3C)

DAMASCUS, SYRIA
SID

Apt Elev
2020'

Trans level: FL150 Trans alt: 13000'
RWY 05L/R: Do not turn RIGHT before DER.

SULAF 1 (SLF 1), SULAF 21 (SLF 21)
DEPARTURES
VIA HOLDING OVER DAM VOR
APPLICABLE WHEN NO ALTITUDE RESTRICTIONS IMPOSED
OTHERWISE PROCEED VIA AIRWAY A 21



SID	RWY	ROUTING
SLF 1	23L/R	To DAM VOR, climb in holding pattern to 5000' or above, then via airway G-202 to SULAF.
SLF 21	05L/R	Turn RIGHT to DAM VOR, climb in holding pattern to 5000' or above, then via airway G-202 to SULAF.

FOR FLIGHT SIMULATION USE ONLY!

OSDI/DAM
DAMASCUS INTL

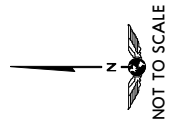
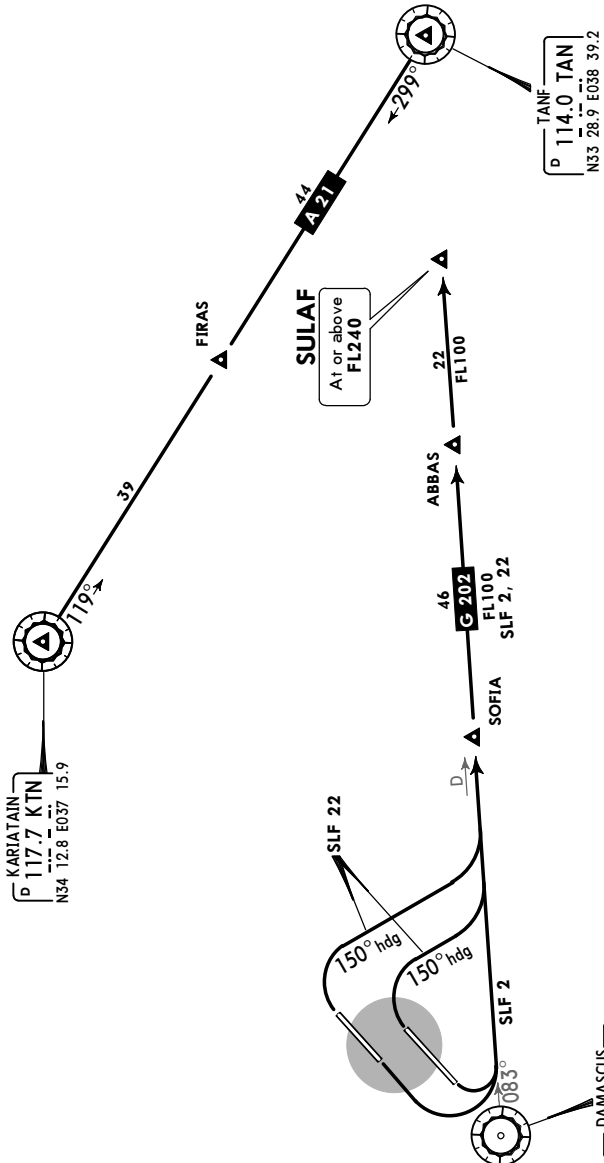
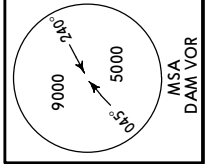
JEPPesen
5 JUL 19 (10-3D)

DAMASCUS, SYRIA
SID

Apt Elev
2020'

Trans level: FL150 Trans alt: 13000'
RWY 05L/R: Do not turn RIGHT before DER.

SULAF 2 (SLF 2), SULAF 22 (SLF 22)
DEPARTURES
WITHOUT HOLDING
APPLICABLE WHEN NO ALTITUDE RESTRICTIONS IMPOSED
OTHERWISE PROCEED VIA AIRWAY A 21



SID	RWY	ROUTING
SLF 2	23L/R	Turn LEFT, intercept DAM R-083 to SULAF.
SLF 22	05L/R	Turn RIGHT, 150° heading, intercept DAM R-083, proceed via airway G-202 to SULAF.

FOR FLIGHT SIMULATION USE ONLY!

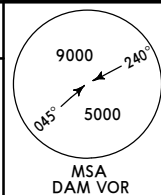
OSDI/DAM
DAMASCUS INTL

JEPPESEN
5 JUL 19 (10-3E)

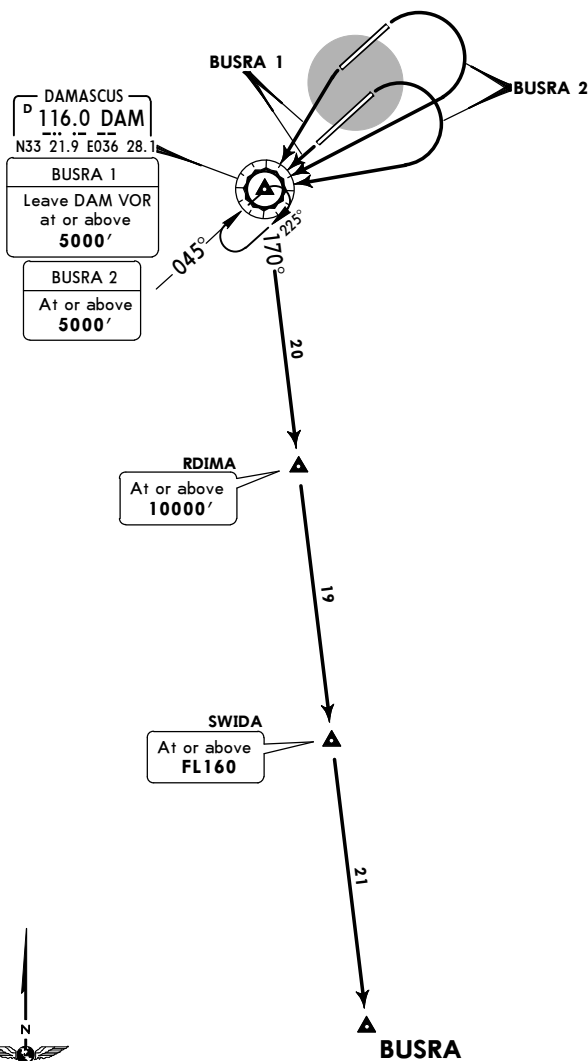
DAMASCUS, SYRIA
SID

Apt Elev
2020'

Trans level: FL150 Trans alt: 13000'
RWY 05L/R: Do not turn RIGHT before DER.



BUSRA 1 (BUS 1), BUSRA 2 (BUS 2)
DEPARTURES



DAMASCUS
D
116.0 DAM
N33 21.9 E036 28.1

BUSRA 1
Leave DAM VOR
at or above
5000'

BUSRA 2
At or above
5000'

RDIMA
At or above
10000'

SWIDA
At or above
FL160



SID	RWY	ROUTING
BUSRA 1	23L/R	To DAM VOR, climb in holding pattern to 5000' or above, DAM R-170 via RDIMA and SWIDA to BUSRA.
BUSRA 2	05L/R	Turn RIGHT to DAM VOR, DAM R-170 via RDIMA and SWIDA to BUSRA.

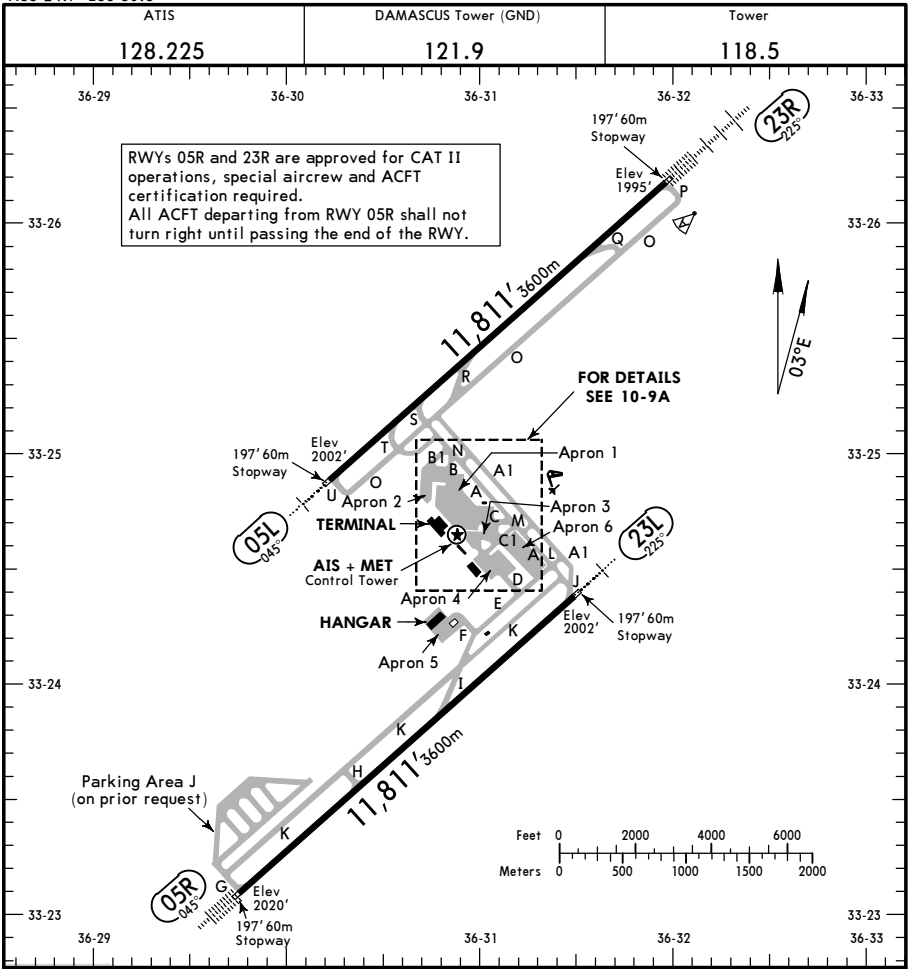
FOR FLIGHT SIMULATION USE ONLY!

OSDI/DAM
 Apt Elev **2020'**
 N33 24.7 E36 30.8

JEPPesen
 28 JUN 19 **(10-9)**

DAMASCUS, SYRIA
DAMASCUS INTL

FOR FLIGHT SIMULATION USE ONLY!



ADDITIONAL RUNWAY INFORMATION

RWY	HIRL CL	ALS	PAPI	RVR	USABLE LENGTHS LANDING BEYOND		TAKE-OFF	WIDTH
					Threshold	Glide Slope		
05L	HIRL CL	ALS	PAPI	RVR				148'
23R	HIRL CL	HIALS-II	TDZ PAPI-L (3.0°)	RVR		10,778' 3285m		45m
05R	HIRL CL	HIALS-II	TDZ PAPI-L (3.0°)	RVR		10,778' 3285m		148'
23L	HIRL CL	HIALS	TDZ PAPI-L (3.0°)	RVR				45m

TAKE-OFF

**AIR CARRIER (JAA)
 All Rwys**

LVP must be in force

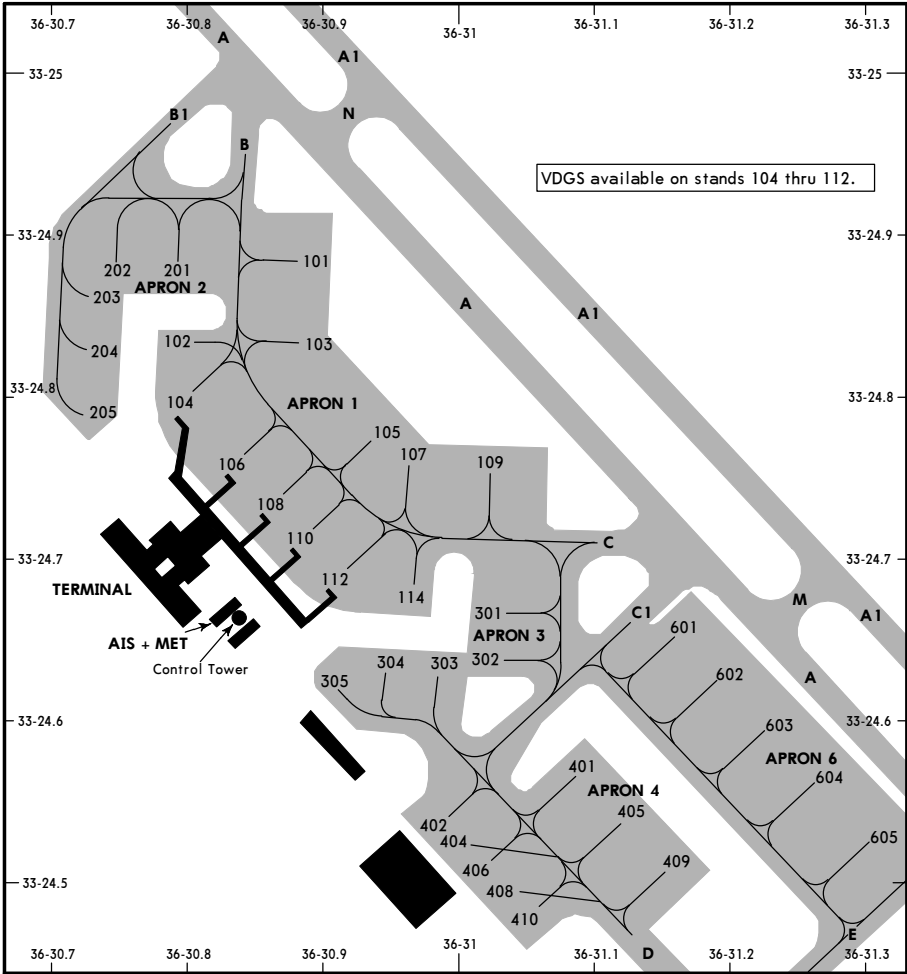
	RL & CL	RCLM (DAY only) or RL	RCLM (DAY only) or RL
A			
B	200m	250m	400m
C			
D	250m	300m	

OSDI/DAM

JEPPesen
28 JUN 19 **(10-9A)**

DAMASCUS, SYRIA
DAMASCUS INTL

FOR FLIGHT SIMULATION USE ONLY!



INS COORDINATES

STAND No.	COORDINATES	STAND No.	COORDINATES
101	N33 24.9 E036 30.9	302, 303	N33 24.6 E036 31.0
102	N33 24.8 E036 30.8	304, 305	N33 24.6 E036 30.9
103	N33 24.8 E036 30.9	401	N33 24.6 E036 31.2
104	N33 24.8 E036 30.8	402	N33 24.6 E036 31.3
105	N33 24.8 E036 30.9	404	N33 24.5 E036 31.0
106	N33 24.7 E036 30.8	405	N33 24.5 E036 31.1
107	N33 24.7 E036 31.0	406, 408	N33 24.5 E036 31.0
108	N33 24.7 E036 30.9	409	N33 24.5 E036 31.2
109	N33 24.7 E036 31.0	410	N33 24.5 E036 31.0
110, 112	N33 24.7 E036 30.9	601, 602	N33 24.6 E036 31.2
114	N33 24.7 E036 31.0	603, 604	N33 24.6 E036 31.3
201	N33 24.9 E036 30.8	605	N33 24.5 E036 31.3
202, 203	N33 24.9 E036 30.7		
204, 205	N33 24.8 E036 30.7		
301	N33 24.7 E036 31.0		

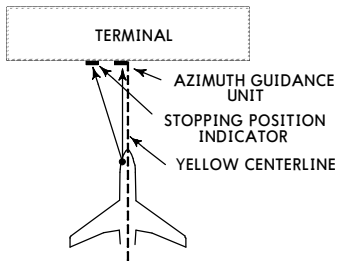
CHANGES: Grid added. Note. Stands 403 and 407 removed.

OSDI

JEPPesen
20 NOV 98 (10-9B)

DAMASCUS, SYRIA
DAMASCUS INTL

VISUAL DOCKING GUIDANCE SYSTEM



GENERAL

The visual docking guidance system for nose-in parking positions consists of the following elements:

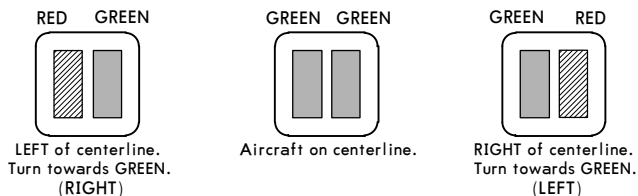
1. AZIMUTH GUIDANCE UNIT
2. YELLOW CENTERLINE
3. STOPPING POSITION INDICATOR
4. STOP SHORT SIGNS

CAUTION

The system is aligned with the LEFT hand pilot's seat only. In case of system failure, nose-in positioning will be guided by marshaller.

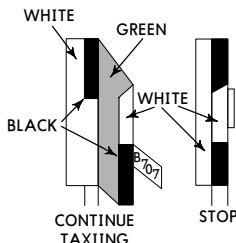
1. AZIMUTH GUIDANCE UNIT (AGNIS)

Approach the parking position along the yellow centerline so that both vertical slots of the Azimuth Guidance Unit show GREEN. Adjustments to the left or right are always to be made towards the GREEN.



2. STOPPING POSITION INDICATOR

The aircraft is stopped at the correct position by means of a Side Marker Board. As the aircraft moves along the centerline towards the airbridge, the pilot will perceive the GREEN side of the slats. Each slat bears a name tab at the appropriate pilot eye-level to indicate the aircraft type(s) to which the slat applies. When he reaches the correct STOP position he will see the black edge only, when he has passed the correct STOP position the red side of the slat will begin to come into view.



3. STOP SHORT SIGNS

They are displayed manually in case of unserviceability of loading bridge.

FOR FLIGHT SIMULATION USE ONLY!

STRAIGHT-IN RWY		A	B	C	D
05L	① VOR	2500' (498') R2100m	2500' (498') R2100m	2500' (498') R2100m	2500' (498') R2100m
	ALS out	R2300m	R2300m	R2300m	R2300m
	VOR	2500' (498') R2300m	2500' (498') R2300m	2500' (498') R2500m	2500' (498') R2500m
	ALS out	R2500m	R2500m	R2700m	R2700m
05R	CAT 2 ILS	2120' (100') RA102' R300m	2120' (100') RA102' R300m	2120' (100') RA102' R300m	2120' (100') RA102' R300m
	ILS	2220' (200') R750m	2220' (200') R750m	2220' (200') R750m	2231' (211') R800m
	FULL	R1200m	R1200m	R1200m	R1200m
	ALS out	R1200m	R1200m	R1200m	R1200m
	① LOC	2310' (290') R900m	2310' (290') R900m	2310' (290') R900m	2310' (290') R900m
	ALS out	R1400m	R1400m	R1400m	R1400m
	LOC	2310' (290') R1100m	2310' (290') R1100m	2310' (290') R1300m	2310' (290') R1300m
	ALS out	R1600m	R1600m	R1800m	R1800m
	① VOR DME	2400' (380') R1300m	2400' (380') R1300m	2400' (380') R1300m	2400' (380') R1300m
	ALS out	R1500m	R1500m	R1700m	R1700m
	VOR DME or NDB VOR	2400' (380') R1500m	2400' (380') R1500m	2400' (380') R1700m	2400' (380') R1700m
	ALS out	R1900m	R1900m	R2100m	R2100m
	① NDB	2700' (680') R2700m	2700' (680') R2700m	2700' (680') R2700m	2700' (680') R2700m
	ALS out	R3100m	R3100m	R3100m	R3100m
	NDB	2700' (680') R2900m	2700' (680') R2900m	2700' (680') R3100m	2700' (680') R3100m
	ALS out	R3300m	R3300m	R3500m	R3500m
23L	① VOR DME	2500' (498') R1800m	2500' (498') R1800m	2500' (498') R1800m	2500' (498') R1800m
	ALS out	R2300m	R2300m	R2300m	R2300m
	VOR DME	2500' (498') R2000m	2500' (498') R2000m	2500' (498') R2200m	2500' (498') R2200m
	ALS out	R2500m	R2500m	R2700m	R2700m
	① VOR	2700' (698') R2800m	2700' (698') R2800m	2700' (698') R2800m	2700' (698') R2800m
	ALS out	R3200m	R3200m	R3200m	R3200m
	VOR	2700' (698') R3000m	2700' (698') R3000m	2700' (698') R3200m	2700' (698') R3200m
	ALS out	R3400m	R3400m	R3600m	R3600m
	① NDB DME	2700' (698') R1500m	2700' (698') R1500m	2700' (698') R2400m	2700' (698') R2400m
	NDB DME	2700' (698') R3000m	2700' (698') R3000m	2700' (698') R3200m	2700' (698') R3200m
	ALS out	R3400m	R3400m	R3600m	R3600m
	① NDB	2700' (698') R2800m	2700' (698') R2800m	2700' (698') R2800m	2700' (698') R2800m
	ALS out	R3200m	R3200m	R3200m	R3200m
	NDB	2700' (698') R3000m	2700' (698') R3000m	2700' (698') R3200m	2700' (698') R3200m
	ALS out	R3400m	R3400m	R3600m	R3600m

① Continuous Descent Final Approach.

FOR FLIGHT SIMULATION USE ONLY!

OSDI/DAM



Standard
DAMASCUS, SYRIA
DAMASCUS INTL

FOR FLIGHT SIMULATION USE ONLY!

STRAIGHT-IN RWY		A	B	C	D
23R	CAT 2 ILS	2095' (100')	2095' (100')	2095' (100')	2095' (100')
		RA103' R300m	RA103' R300m	RA103' R300m	RA103' R300m
	ILS	2195' (200')	2195' (200')	2195' (200')	2206' (211')
	FULL	R550m	R550m	R550m	R550m
	TDZ or CL out	① R550m	① R550m	① R550m	① R550m
	ALS out	R1200m	R1200m	R1200m	R1200m
	② LOC	2310' (315')	2310' (315')	2310' (315')	2310' (315')
		R750m	R750m	R750m	R750m
	ALS out	R1400m	R1400m	R1400m	R1400m
	LOC	2310' (315')	2310' (315')	2310' (315')	2310' (315')
		R1000m	R1000m	R1200m	R1200m
	ALS out	R1600m	R1600m	R1800m	R1800m
	RNAV (LNAV/VNAV)	2250' (255')	2250' (255')	2250' (255')	2250' (255')
		③ R750m	③ R750m	③ R750m	③ R750m
	ALS out	R1300m	R1300m	R1300m	R1300m
	④ RNAV (LNAV)	2270' (275')	2270' (275')	2270' (275')	2270' (275')
		R750m	R750m	R750m	R750m
	ALS out	R1300m	R1300m	R1300m	R1300m
⑤ VOR DME	2500' (505')	2500' (505')	2500' (505')	2500' (505')	
	R1600m	R1600m	R1600m	R1600m	
ALS out	R2400m	R2400m	R2400m	R2400m	
VOR DME	2500' (505')	2500' (505')	2500' (505')	2500' (505')	
	R1800m	R1800m	R2000m	R2000m	
ALS out	R2600m	R2600m	R2800m	R2800m	

- ① RVR 750m when a Flight Director or Autopilot or HUD to DA is not used.
- ② Continuous Descent Final Approach.
- ③ With TDZ & CL & HUD: RVR 600m.

CIRCLE-TO-LAND	A	B	C	D
	NOT AUTHORIZED			

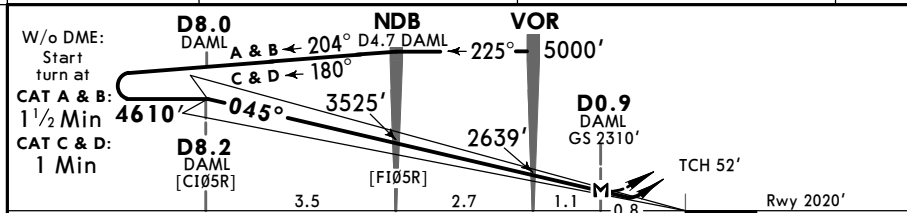
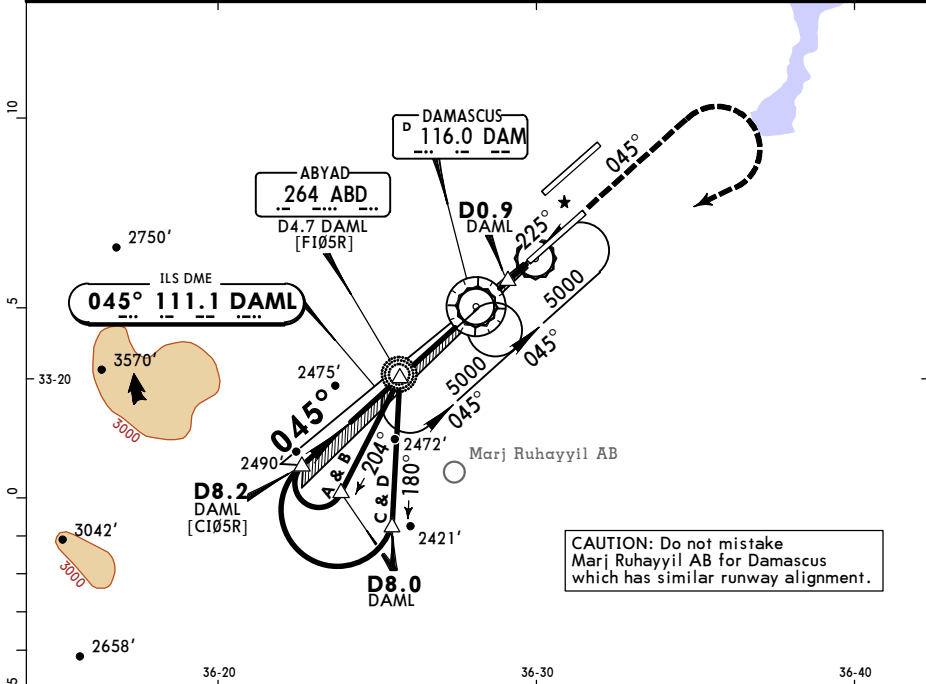
TAKE-OFF					
	Low Visibility Take-off			Day: RL or RCLM Night: RL or CL	Adequate vis ref (Day only)
	RL, CL & relevant RVR	RL & CL	Day: RL & RCLM Night: RL or CL		
A					
B	TDZ, MID, RO				
C	R150m	R200m	R300m	400m	500m
D					

OSDI/DAM DAMASCUS INTL

JEPPESSEN
19 JUL 19 (11-1)

DAMASCUS, SYRIA VOR ILS DME Rwy 05R

ATIS 128.225	DAMASCUS Control (APP) 120.0	DAMASCUS Radar 121.3	DAMASCUS Tower 118.5	Ground 121.9
LOC DAML 111.1	Final Apth Crs 045°	GS D8.2 DAML 4610' (2590')	ILS DA(H) Refer to Minimums	Apt Elev 2020' Rwy 2020'
MISSED APCH: Climb on heading 045°, turn RIGHT inbound VOR climbing to 5000'.				
Alt Set: hPa		Rwy Elev: 72 hPa	Trans level: FL 150	Trans alt: 13000'
				MSA DAM VOR



Gnd speed-Kts	70	90	100	120	140	160	HIALS-II	045° hdg	5000'	DAM
ILS GS or LOC Descent Angle	3.00°	372	478	531	637	849	PAPI	↑	RT	116.0
MAP at D0.9 DAML										

STRAIGHT-IN LANDING RWY 05R							CIRCLE-TO-LAND				
ILS DA(H) ABC: 2220' (200') D: 2231' (211')				LOC (GS out) MDA(H) 2310' (290')							
FULL		TDZ or CL out		ALS out		ALS out					
A								A			
B	RVR 550m VIS 800m	RVR 720m VIS 800m			RVR 720m VIS 800m		RVR 1500m VIS 1600m	B	NOT AUTHORIZED		
C			1200m					C			
D					1200m			D			

FOR FLIGHT SIMULATION USE ONLY!

OSDI/DAM
DAMASCUS INTL

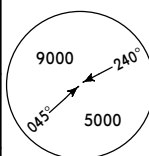
19 JUL 19



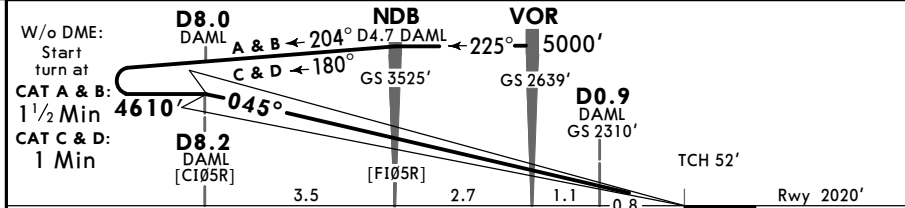
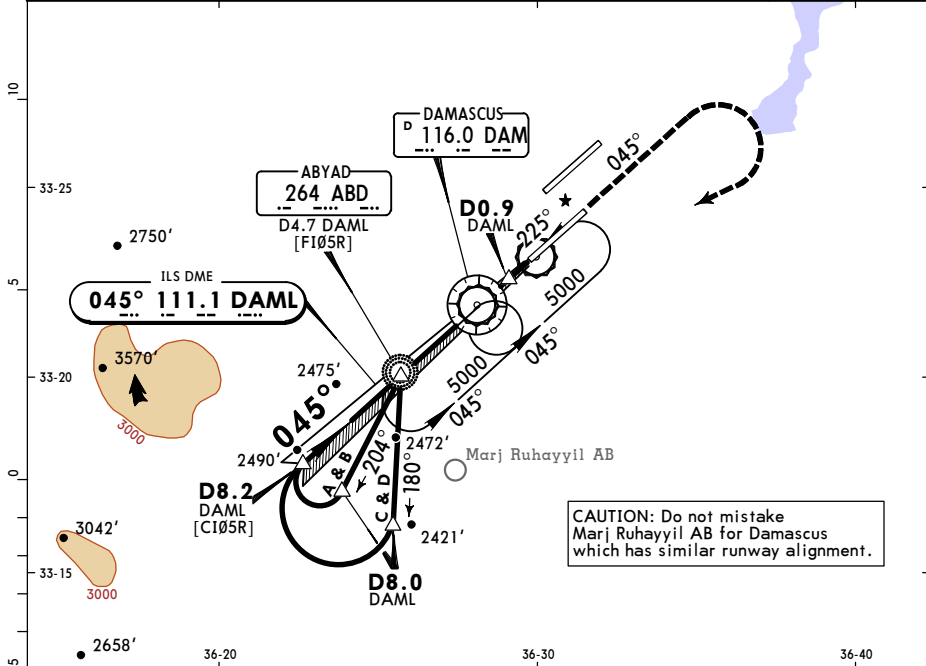
11-1A

DAMASCUS, SYRIA
CAT II VOR ILS DME Rwy 05R

ATIS 128.225		DAMASCUS Control (APP) 120.0		DAMASCUS Radar 121.3		DAMASCUS Tower 118.5		Ground 121.9	
LOC DAML 111.1		Final Apth Crs 045°		GS D8.2 DAML 4610' (2590')		CAT II ILS RA 102' DA(H) 2120'(100')		Apt Elev 2020' Rwy 2020'	
<p>MISSED APCH: Climb on heading 045°, turn RIGHT inbound VOR climbing to 5000'.</p> <p>Alt Set: hPa Rwy Elev: 72 hPa Trans level: FL 150 Trans alt: 13000'</p> <p>Special Aircrew & Aclt Certification Required.</p>									



MSA DAM VOR



Gnd speed-Kts	70	90	100	120	140	160	HIALS-II PAPI	045° hdg	5000'	DAM 116.0
GS	3.00°	372	478	531	637	849				

STRAIGHT-IN LANDING RWY 05R
CAT II ILS
ABCD
RA 102'
DA(H) **2120'**(100')

RVR 350m

PANS OPS

FOR FLIGHT SIMULATION USE ONLY!

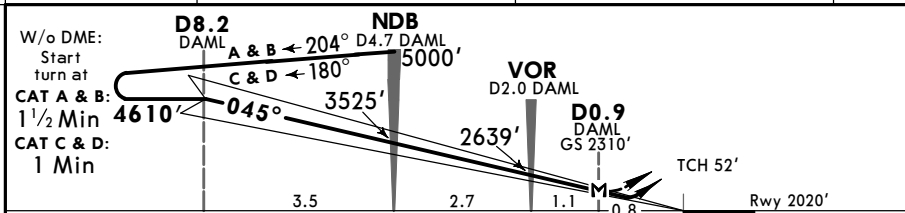
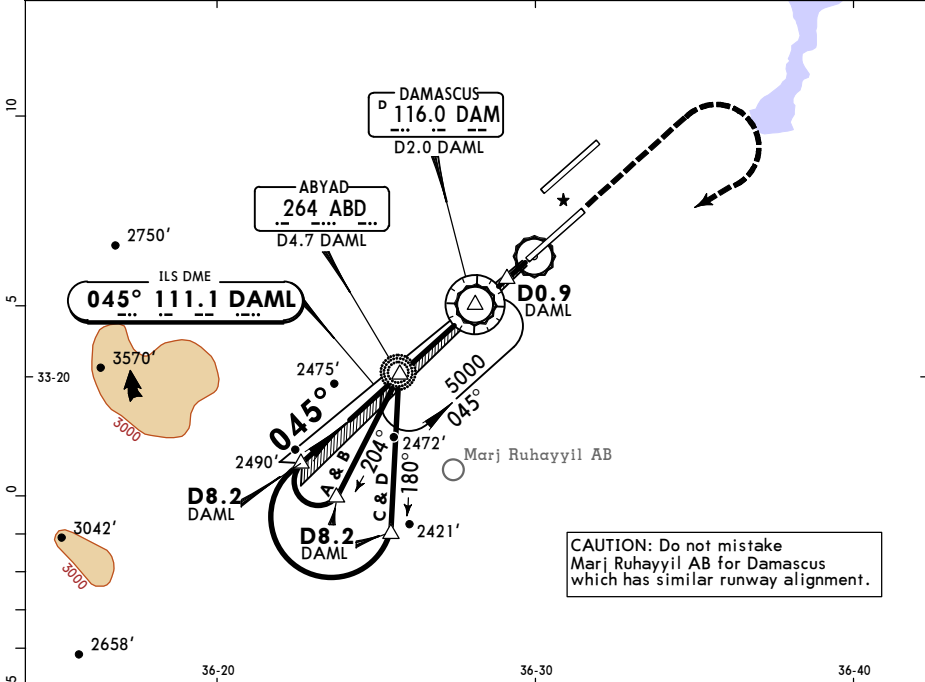
OSDI/DAM
DAMASCUS INTL

JEPPESSEN
19 JUL 19 **(11-2)**

DAMASCUS, SYRIA
NDB ILS DME Rwy 05R

ATIS 128.225		DAMASCUS Control (APP) 120.0		DAMASCUS Radar 121.3		DAMASCUS Tower 118.5		Ground 121.9	
LOC DAML 111.1		Final Apth Crs 045°		GS D8.2 DAML 4610' (2590')		ILS DA(H) Refer to Minimums		Apt Elev 2020' Rwy 2020'	
MISSED APCH: Climb STRAIGHT AHEAD, then climbing turn RIGHT to NDB to 5000'.									
Alt Set: hPa		Rwy Elev: 72 hPa		Trans level: FL 150			Trans alt: 13000'		MSA DAM VOR

FOR FLIGHT SIMULATION USE ONLY!



Gnd speed-Kts	70	90	100	120	140	160	HIALS-II PAPI ↑ RT	5000' ABD 264
ILS GS or LOC Descent Angle	3.00°	372	478	531	637	743		
MAP at D0.9 DAML								

STRAIGHT-IN LANDING RWY 05R						CIRCLE-TO-LAND		
ILS			LOC (GS out)					
DA(H) ABC: 2220'(200') D: 2231'(211')			MDA(H) 2310'(290')					
FULL		TDZ or CL out		ALS out		ALS out		
A						A		
B	RVR 550m VIS 800m	RVR 720m VIS 800m		RVR 720m VIS 800m		B		
C			1200m			C	NOT AUTHORIZED	
D				1200m		D		

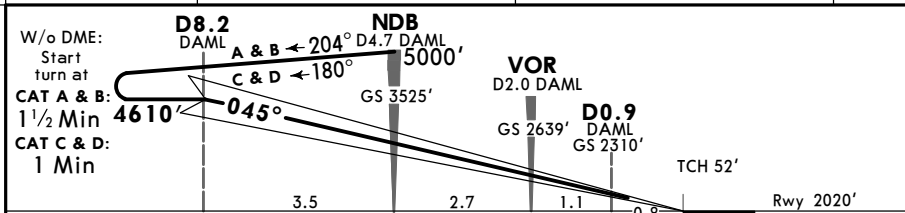
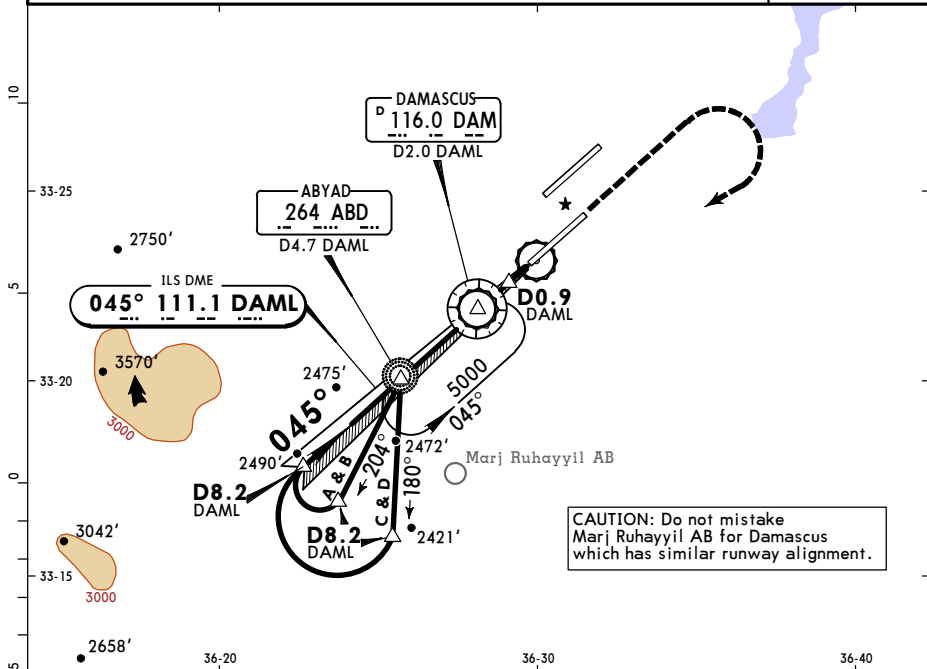
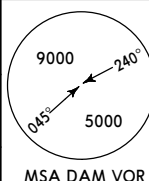
PANS OPS

OSDI/DAM
DAMASCUS INTL

JEPPESEN
19 JUL 19 **(11-2A)** **CAT II NDB ILS DME Rwy 05R**

DAMASCUS, SYRIA

ATIS 128.225		DAMASCUS Control (APP) 120.0		DAMASCUS Radar 121.3		DAMASCUS Tower 118.5		Ground 121.9	
LOC DAML 111.1		Final Apch Crs 045°		GS D8.2 DAML 4610' (2590')		CAT II ILS RA 102' DA(H) 2120'(100')		Apt Elev 2020' Rwy 2020'	
<p>MISSED APCH: Climb STRAIGHT AHEAD, then climbing turn RIGHT to NDB to 5000'.</p>									
Alt Set: hPa		Rwy Elev: 72 hPa		Trans level: FL 150			Trans alt: 13000'		
Special Aircrew & Aclt Certification Required.									



Gnd speed-Kts	70	90	100	120	140	160	HIALS-II PAPI ↑ RT	5000' ABD 264
GS	3.00°	372	478	531	637	849		

STRAIGHT-IN LANDING RWY 05R
CAT II ILS
ABCD
RA 102'
DA(H) 2120'(100')

RVR 350m

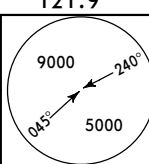
PANS OPS

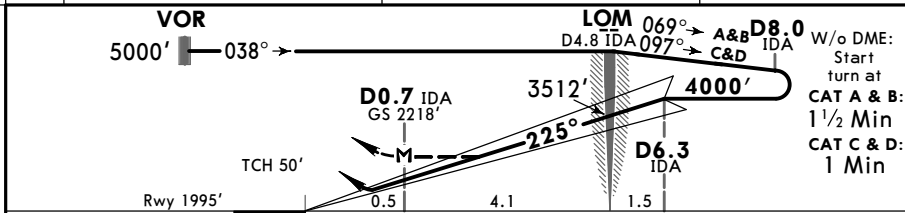
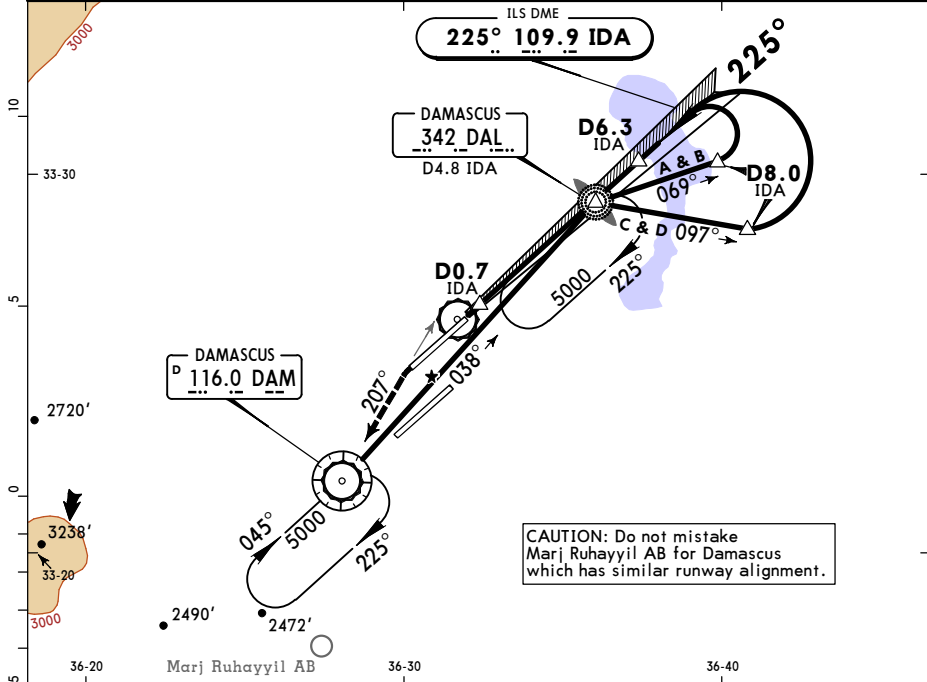
FOR FLIGHT SIMULATION USE ONLY!

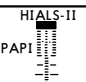
OSDI/DAM
DAMASCUS INTL

JEPPESEN
19 JUL 19 **(11-3)**

DAMASCUS, SYRIA
VOR ILS DME Rwy 23R

ATIS 128.225	DAMASCUS Control (APP) 120.0	DAMASCUS Radar 121.3	DAMASCUS Tower 118.5	Ground 121.9
LOC IDA 109.9	Final Appch Crs 225°	GS D6.3 IDA 4000' (2005')	ILS DA(H) Refer to Minimums	Apt Elev 2020' Rwy 1995'
MISSED APCH: Climb on heading 225°, intercept R-027 inbound VOR climbing to 5000'.				
Alt Set: hPa	Rwy Elev: 71 hPa	Trans level: FL 150	Trans alt: 13000'	MSA DAM VOR



Gnd speed-Kts	70	90	100	120	140	160		225° hdg ↑	5000' DAM onto 116.0 R-027 LT
ILS GS or LOC Descent Angle	3.00°	372	478	531	637	849			

STRAIGHT-IN LANDING RWY 23R					LOC (GS out)		CIRCLE-TO-LAND		
ILS					MDA(H) 2310' (315')				
DA(H) ABC: 2195' (200') D: 2206' (211')		FULL		TDX or CL out		ALS out			
A									
B	RVR 550m VIS 800m	RVR 720m VIS 800m			RVR 720m VIS 800m		RVR 1500m VIS 1600m		NOT AUTHORIZED
C			1200m		1200m				
D									

PANS OPS

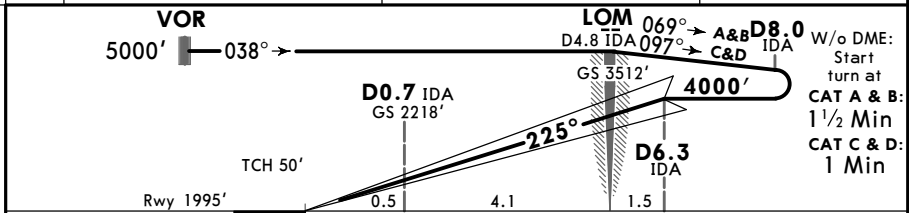
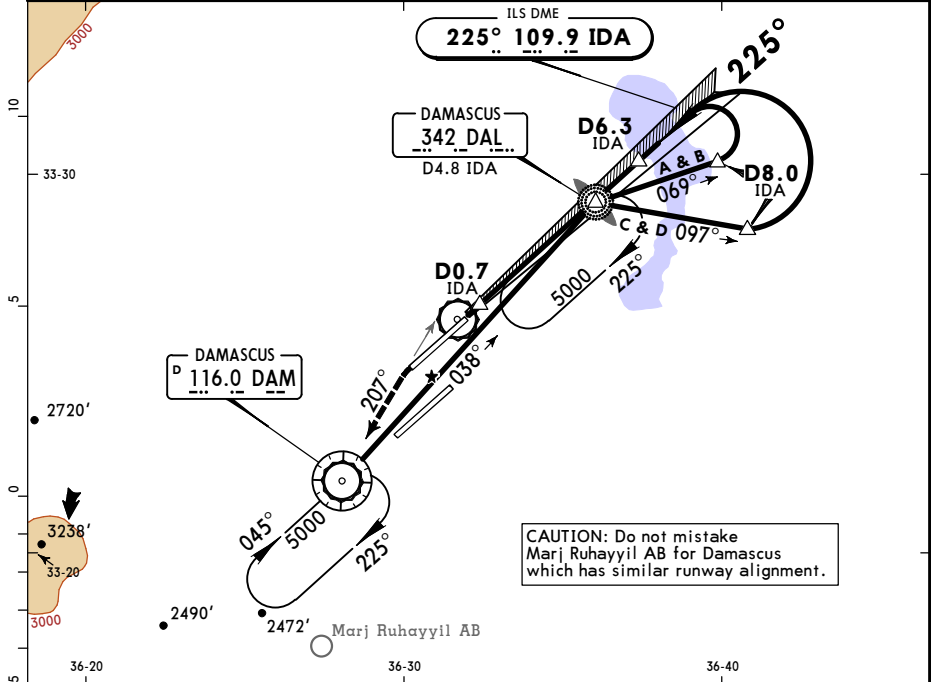
FOR FLIGHT SIMULATION USE ONLY!

OSDI/DAM
DAMASCUS INTL

JEPPESEN
19 JUL 19 **(11-3A)** CAT II VOR ILS DME Rwy 23R

DAMASCUS, SYRIA
DAMASCUS INTL

ATIS 128.225	DAMASCUS Control (APP) 120.0	DAMASCUS Radar 121.3	DAMASCUS Tower 118.5	Ground 121.9
LOC IDA 109.9	Final Apch Crs 225°	GS D6.3 IDA 4000' (2005')	CAT II ILS RA 103' DA(H) 2095'(100')	Apt Elev 2020' Rwy 1995'
MISSED APCH: Climb on heading 225°, intercept R-027 inbound VOR climbing to 5000'.				
Alt Set: hPa	Rwy Elev: 71 hPa	Trans level: FL 150	Trans alt: 13000'	
Special Aircrew & Acft Certification Required.				
				MSA DAM VOR



Gnd speed-Kts	70	90	100	120	140	160	HIALS-II 	225° hdg ↑	5000' ↑ onto LT	DAM 116.0 R-027
GS	3.00°	372	478	531	637	743				

STRAIGHT-IN LANDING RWY 23R
CAT II ILS
ABCD
RA 103'
DA(H) **2095'** (100')

RVR 350m

PANS OPS

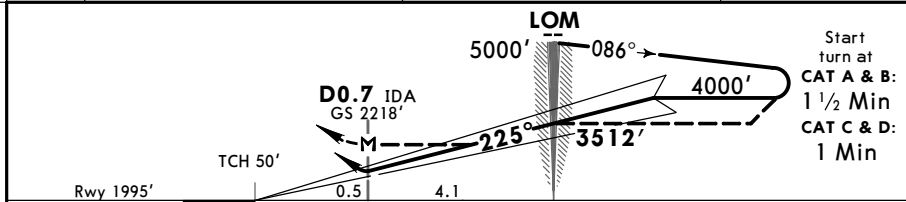
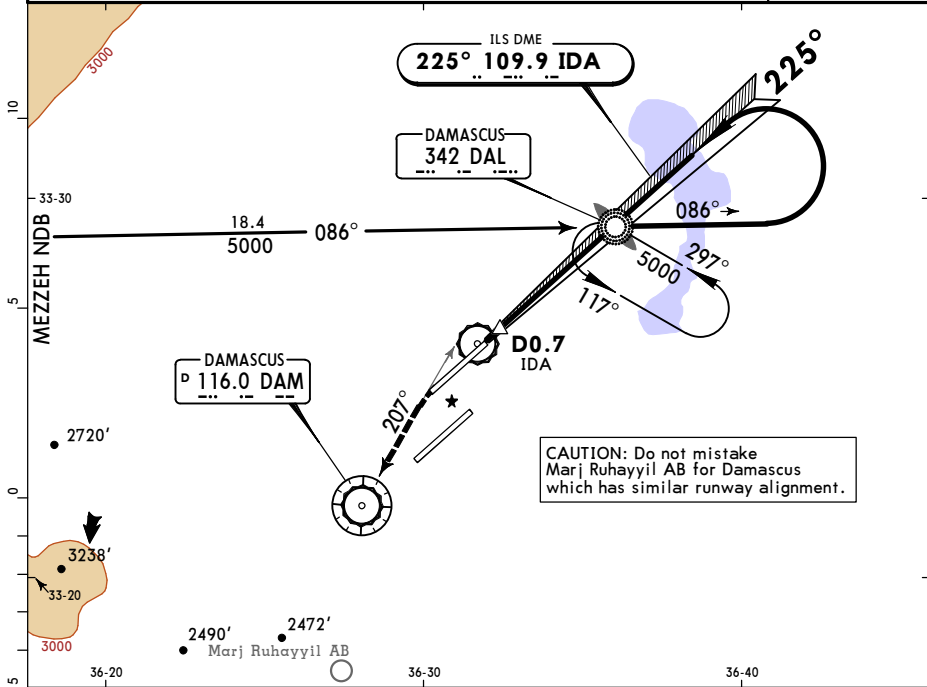
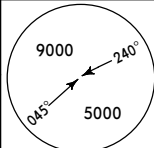
FOR FLIGHT SIMULATION USE ONLY!

OSDI/DAM
DAMASCUS INTL

JEPPESON
19 JUL 19 **(11-4)**

DAMASCUS, SYRIA
NDB ILS 1 Rwy 23R

ATIS 128.225		DAMASCUS Control (APP) 120.0		DAMASCUS Radar 121.3		DAMASCUS Tower 118.5		Ground 121.9	
LOC IDA 109.9		Final Appch Crs 225°		GS LOM 3512' (1517')		ILS DA(H) Refer to Minimums		Apt Elev 2020' Rwy 1995'	
MISSED APCH: Climb on heading 225°, intercept R-027 inbound VOR climbing to 5000'.									
Alt Set: hPa		Rwy Elev: 71 hPa		Trans level: FL 150			Trans alt: 13000'		MSA DAL NDB



Gnd speed-Kts	70	90	100	120	140	160	HIALS-II	225° hdg	5000' DAM onto 116.0 LT R-027
ILS GS or LOC Descent Angle	3.00°	372	478	531	637	849	PAPI		
MAP at D0.7 IDA									

STRAIGHT-IN LANDING RWY 23R									
ILS					LOC (GS out)				
DA(H) ABC: 2195' (200') D: 2206' (211')					MDA(H) 2310' (315')				
FULL		TDZ or CL out		ALS out		ALS out			
A									
B	RVR 550m VIS 800m	RVR 720m VIS 800m			RVR 720m VIS 800m		RVR 1500m VIS 1600m		
C			1200m		1200m				
D									

PANS OPS

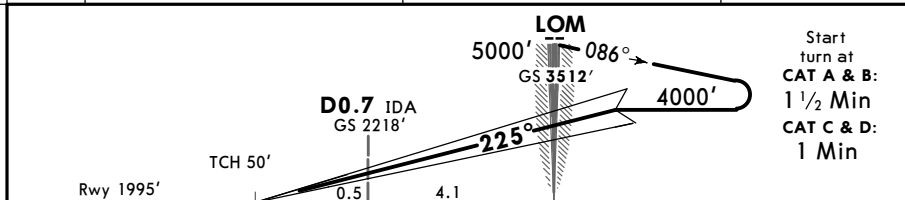
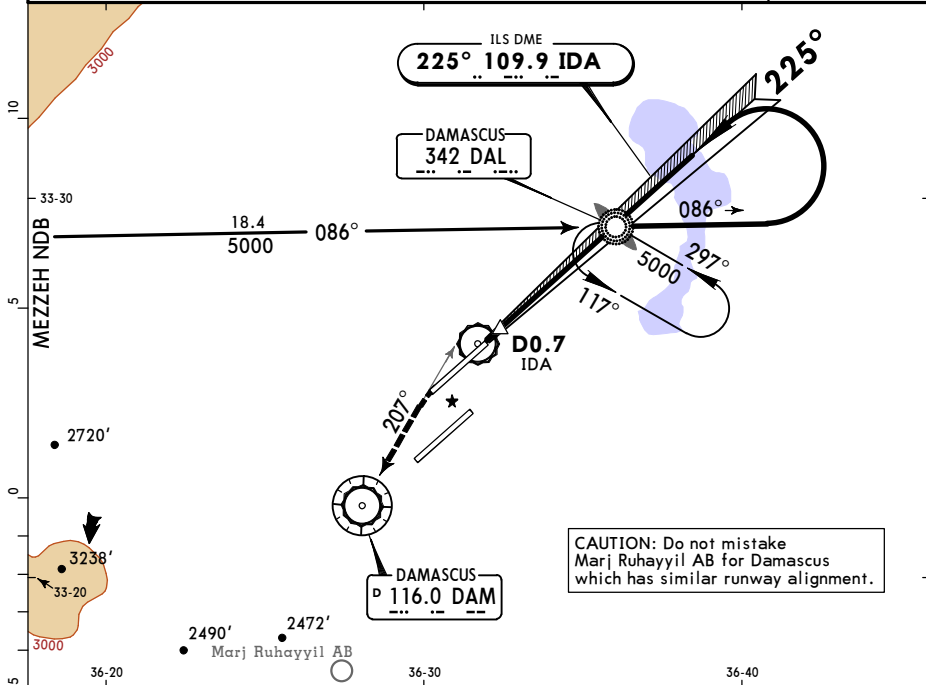
FOR FLIGHT SIMULATION USE ONLY!

OSDI/DAM
DAMASCUS INTL

JEPPESEN
19 JUL 19 **(11-4A)**

DAMASCUS, SYRIA
CAT II NDB ILS 1 Rwy 23R

ATIS 128.225	DAMASCUS Control (APP) 120.0	DAMASCUS Radar 121.3	DAMASCUS Tower 118.5	Ground 121.9
LOC IDA 109.9	Final Apth Crs 225°	GS LOM 3512' (1517')	CAT II ILS RA 103' DA(H) 2095'(100')	Apt Elev 2020' Rwy 1995'
MISSED APCH: Climb on heading 225°, intercept R-027 inbound VOR climbing to 5000'.				
Alt Set: hPa		Rwy Elev: 71 hPa	Trans level: FL 150	
Special Aircrew & Ackt Certification Required.				MSA DAL NDB



Gnd speed-Kts	70	90	100	120	140	160	HIALS-II PAPI 225° hdg ↑	5000' / DAM onto 116.0 LT R-027
GS	3.00°	372	478	531	637	849		

STRAIGHT-IN LANDING RWY 23R
CAT II ILS
ABCD
RA 103'
DA(H) **2095'**(100')

RVR 350m

PANS OPS

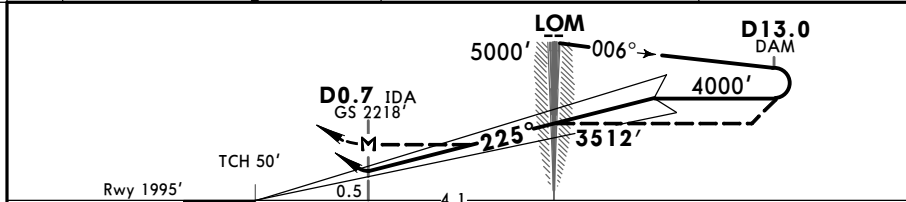
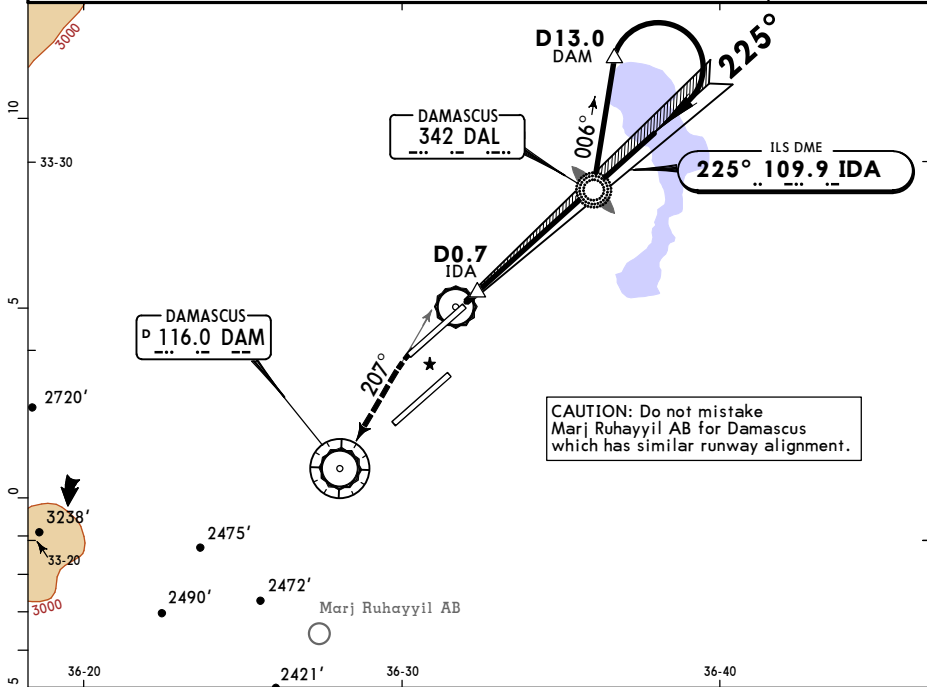
FOR FLIGHT SIMULATION USE ONLY!

OSDI/DAM
DAMASCUS INTL

JEPPESSEN
19 JUL 19 (11-5)

DAMASCUS, SYRIA
NDB ILS 2 Rwy 23R

ATIS 128.225	DAMASCUS Control (APP) 120.0	DAMASCUS Radar 121.3	DAMASCUS Tower 118.5	Ground 121.9
LOC IDA 109.9	Final Apch Crs 225°	GS LOM 3512' (1517')	ILS DA(H) Refer to Minimums Apt Elev 2020' Rwy 1995'	
MISSED APCH: Climb on heading 225°, intercept R-027 inbound VOR climbing to 5000'.				
Alt Set: hPa		Rwy Elev: 71 hPa	Trans level: FL 150	Trans alt: 13000'
				MSA DAL NDB



Gnd speed-Kts	70	90	100	120	140	160	HIALS-II PAPI 	225° hdg ↑	5000' DAM ↙ onto LT 116.0 R-027
ILS GS or LOC Descent Angle	3.00°	372	478	531	637	849			
MAP at D0.7 IDA									

STRAIGHT-IN LANDING RWY 23R				
ILS				
DA(H) ABC: 2195' (200') D: 2206' (211')			LOC (GS out) MDA(H) 2310' (315')	
FULL		TDZ or CL out	ALS out	ALS out
A				
B	RVR 550m	RVR 720m	1200m	RVR 720m
C	VIS 800m	VIS 800m		VIS 800m
D				VIS 1500m
				VIS 1600m
				1200m

PANS OPS

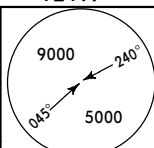
FOR FLIGHT SIMULATION USE ONLY!

OSDI/DAM
DAMASCUS INTL

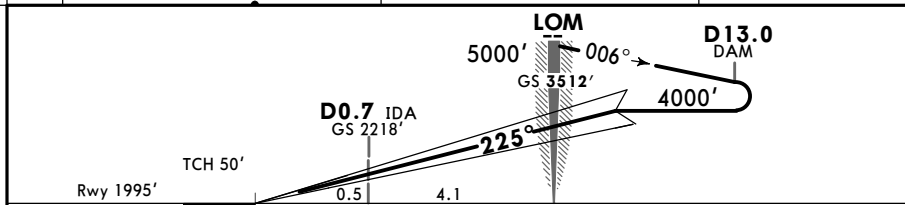
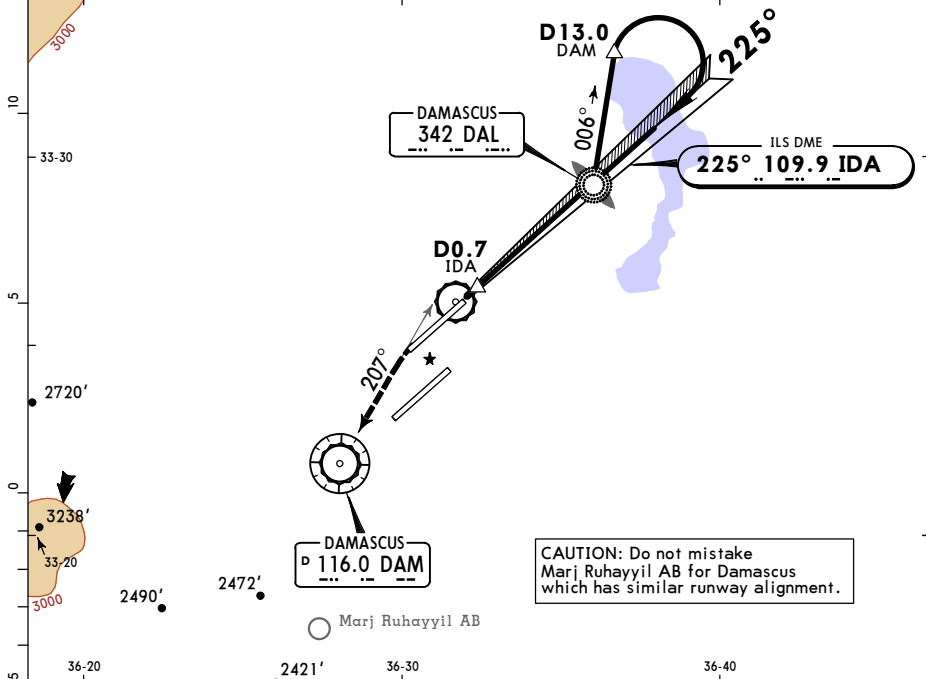
JEPPESEN
19 JUL 19 **(11-5A)**

DAMASCUS, SYRIA
CAT II NDB ILS 2 Rwy 23R

ATIS 128.225	DAMASCUS Control (APP) 120.0	DAMASCUS Radar 121.3	DAMASCUS Tower 118.5	Ground 121.9
LOC IDA 109.9	Final Apth Crs 225°	GS LOM 3512' (1517')	CAT II ILS RA 103' DA(H) 2095'(100')	Apt Elev 2020' Rwy 1995'
MISSED APCH: Climb on heading 225°, intercept R-027 inbound VOR climbing to 5000'.				
Alt Set: hPa		Rwy Elev: 71 hPa	Trans level: FL 150	Trans alt: 13000'
Special Aircrew & Acft Certification Required.				



MSA DAL NDB



Gnd speed-Kts	70	90	100	120	140	160	HIALS-II PAPI 225° hdg ↑	5000' onto LT DAM 116.0 R-027
GS	3.00°	372	478	531	637	743		

STRAIGHT-IN LANDING RWY 23R
CAT II ILS
ABCD
RA 103'
DA(H) **2095'** (100')

RVR 350m

PANS OPS

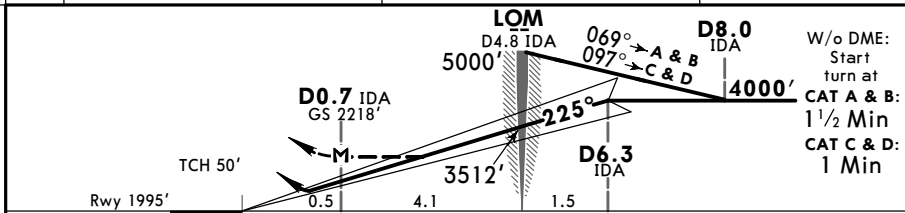
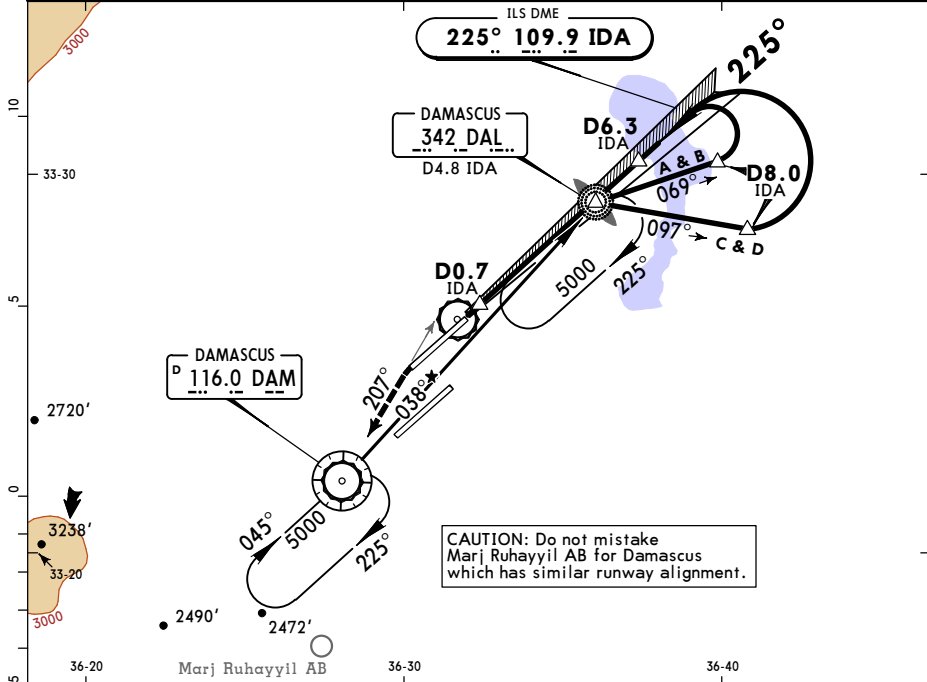
FOR FLIGHT SIMULATION USE ONLY!

OSDI/DAM
DAMASCUS INTL

JEPPESSEN
19 JUL 19 **(11-6)**

DAMASCUS, SYRIA
NDB ILS DME 3 Rwy 23R

ATIS 128.225	DAMASCUS Control (APP) 120.0	DAMASCUS Radar 121.3	DAMASCUS Tower 118.5	Ground 121.9
LOC IDA 109.9	Final Appch Crs 225°	GS D6.3 IDA 4000' (2005')	ILS DA(H) Refer to Minimums	Apt Elev 2020' Rwy 1995'
MISSED APCH: Climb on heading 225°, intercept R-027 inbound VOR climbing to 5000'.				
Alt Set: hPa	Rwy Elev: 71 hPa	Trans level: FL 150	Trans alt: 13000'	MSA DAM VOR



Gnd speed-Kts	70	90	100	120	140	160	HI ALS-II PAPI 225° hdg 5000' onto DAM 116.0 R-027 LT
ILS GS or LOC Descent Angle	3.00°	372	478	531	637	849	
MAP at D0.7 IDA							

STRAIGHT-IN LANDING RWY 23R					CIRCLE-TO-LAND		
ILS				LOC (GS out)			
DA(H) ABC: 2195' (200') D: 2206' (211')				MDA(H) 2310' (315')			
FULL		TDZ or CL out		ALS out			
A						NOT AUTHORIZED	
B	RVR 550m	RVR 720m		RVR 720m	RVR 1500m		
C	VIS 800m	VIS 800m	1200m	VIS 800m	VIS 1600m		
D				1200m			

PANS OPS

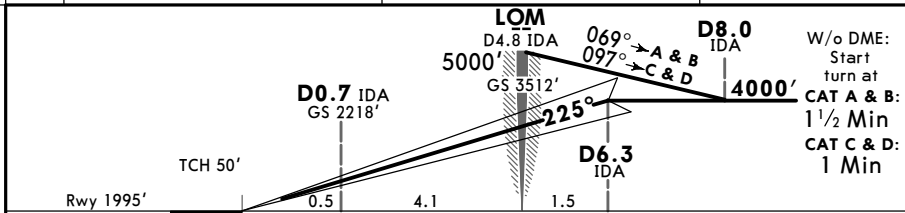
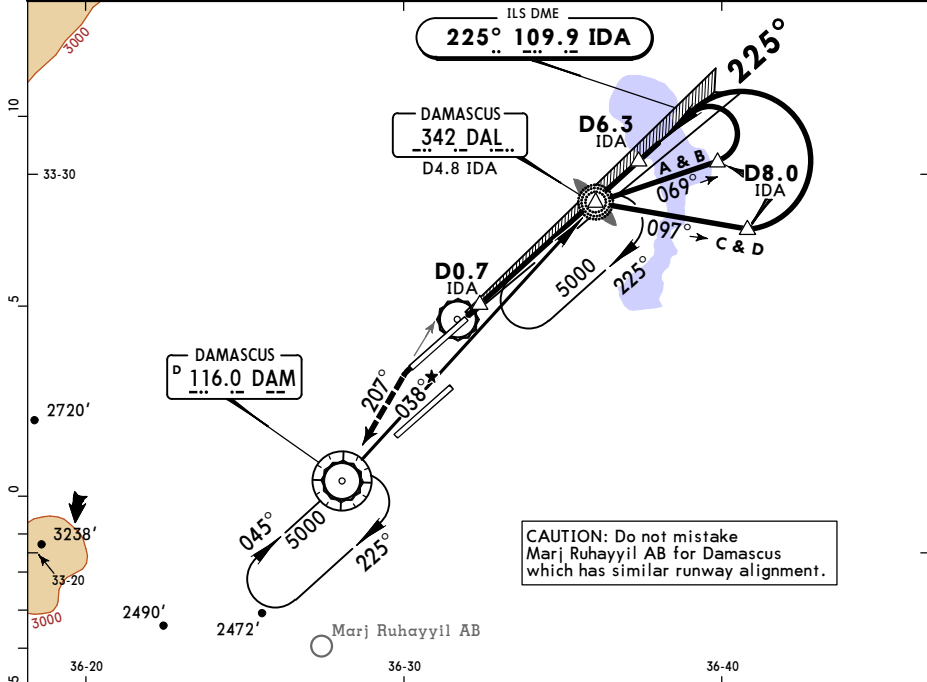
FOR FLIGHT SIMULATION USE ONLY!

OSDI/DAM
DAMASCUS INTL

JEPPESEN
19 JUL 19 **(11-6A)** CAT II NDB ILS DME 3 Rwy 23R

DAMASCUS, SYRIA
DAMASCUS INTL

ATIS 128.225	DAMASCUS Control (APP) 120.0	DAMASCUS Radar 121.3	DAMASCUS Tower 118.5	Ground 121.9
LOC IDA 109.9	Final Apth Crs 225°	GS D6.3 IDA 4000' (2005')	CAT II ILS RA 103' DA(H) 2095'(100')	Apt Elev 2020' Rwy 1995'
MISSED APCH: Climb on heading 225°, intercept R-027 inbound VOR climbing to 5000'.				
Alt Set: hPa	Rwy Elev: 71 hPa	Trans level: FL 150	Trans alt: 13000'	
Special Aircrew & Aft Certification Required.				
				MSA DAM VOR



Gnd speed-Kts	70	90	100	120	140	160	HIALS-II 	225° hdg ↑	5000' ↑ LT	DAM 116.0 R-027
GS	3.00°	372	478	531	637	743				

STRAIGHT-IN LANDING RWY 23R CAT II ILS RA 103' DA(H) 2095'(100')										
RVR 350m										

PANS OPS

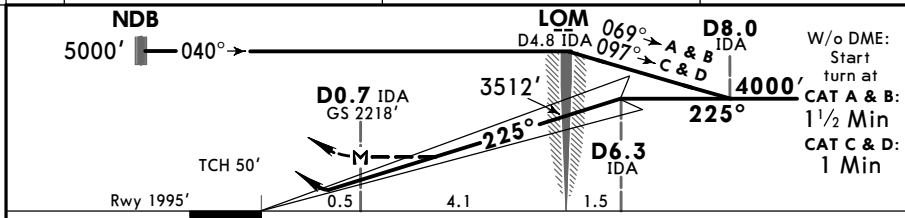
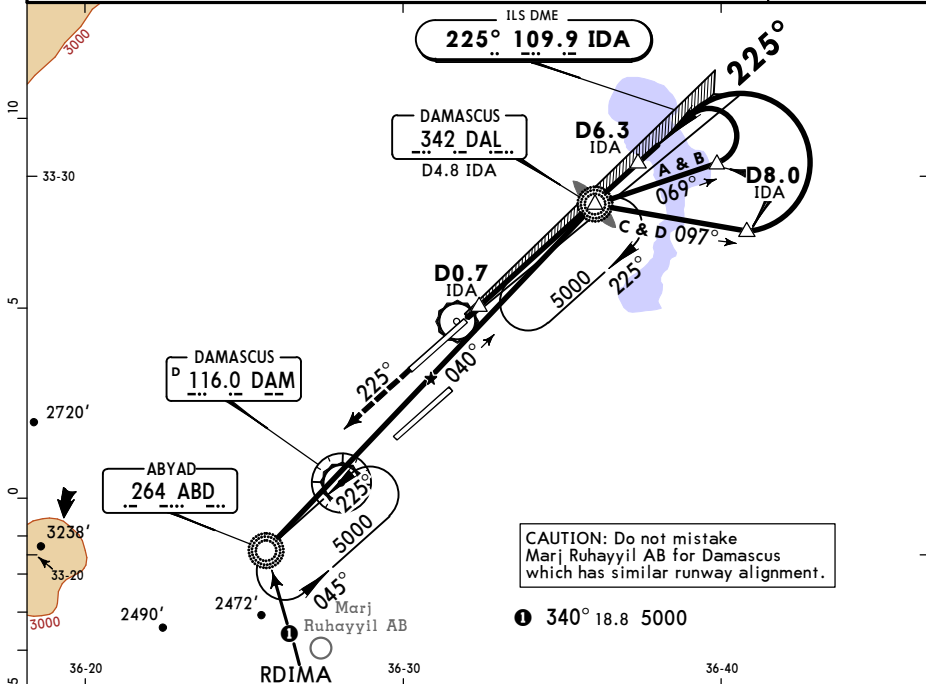
FOR FLIGHT SIMULATION USE ONLY!

OSDI/DAM
DAMASCUS INTL

JEPESEN
19 JUL 19 **(11-7)**

DAMASCUS, SYRIA
NDB ILS DME 4 Rwy 23R

ATIS 128.225	DAMASCUS Control (APP) 120.0	DAMASCUS Radar 121.3	DAMASCUS Tower 118.5	Ground 121.9
LOC IDA 109.9	Final Appch Crs 225°	GS D6.3 IDA 4000' (2005')	ILS DA(H) Refer to Minimums Apt Elev 2020' Rwy 1995'	
MISSED APCH: Climb on heading 225°, then proceed inbound to ABD NDB, climbing to 5000'.				
Alt Set: hPa		Rwy Elev: 71 hPa	Trans level: FL 150	Trans alt: 13000'
				MSA DAM VOR



Gnd speed-Kts	70	90	100	120	140	160	HIALS-II PAPI 225° hdg 5000' LT ABD 264
ILS GS or LOC Descent Angle	3.00°	372	478	531	637	849	

STRAIGHT-IN LANDING RWY 23R					LOC (GS out)		CIRCLE-TO-LAND		
ILS					LOC (GS out)				
DA(H) ABC: 2195' (200') D: 2206' (211')					MDA(H) 2310' (315')				
FULL		TDZ or CL out		ALS out		ALS out			
A						A	NOT AUTHORIZED		
B	RVR 550m	RVR 720m		RVR 720m	RVR 1500m	B			
C	VIS 800m	VIS 800m	1200m	VIS 800m	VIS 1600m	C			
D				1200m		D			

PANS OPS

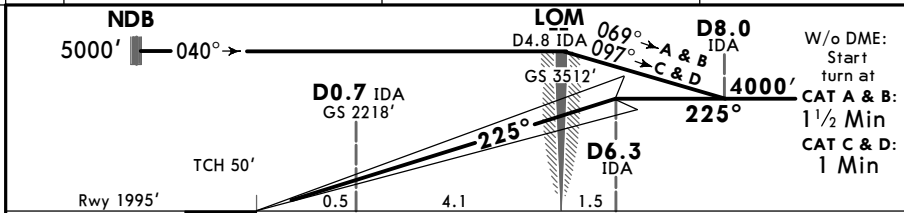
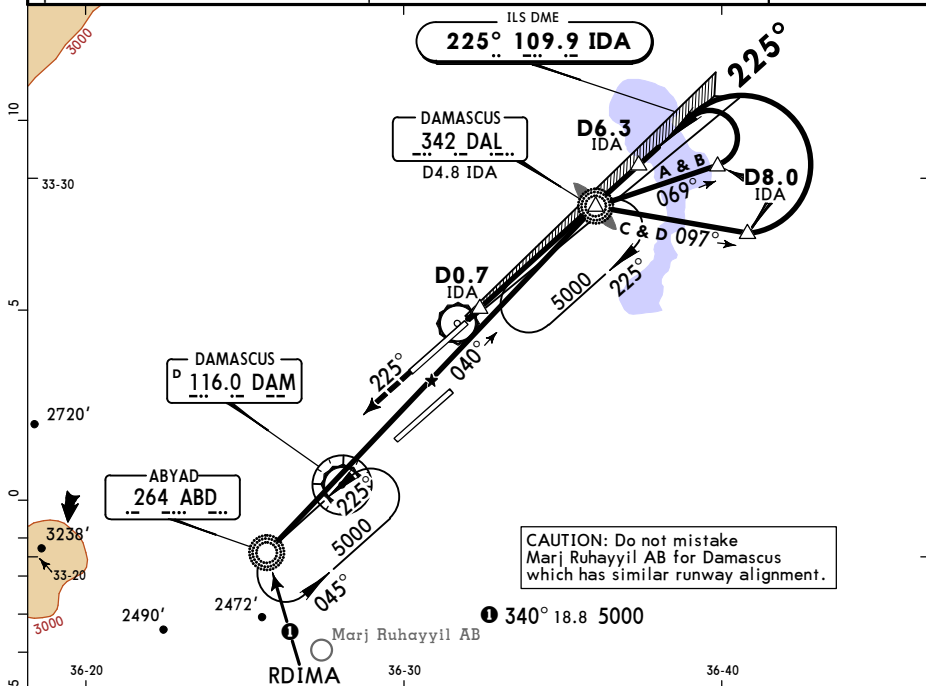
FOR FLIGHT SIMULATION USE ONLY!

OSDI/DAM
DAMASCUS INTL

JEPPESEN
19 JUL 19 **(11-7A)CAT II NDB ILS DME 4 Rwy 23R**

DAMASCUS, SYRIA
DAMASCUS INTL

ATIS 128.225	DAMASCUS Control (APP) 120.0	DAMASCUS Radar 121.3	DAMASCUS Tower 118.5	Ground 121.9	
LOC IDA 109.9	Final Apth Crs 225°	GS D6.3 IDA 4000' (2005')	CAT II ILS RA 103' DA(H) 2095'(100')	Apt Elev 2020' Rwy 1995'	
MISSED APCH: Climb on heading 225°, then proceed inbound to ABD NDB climbing to 5000'.					
Alt Set: hPa		Rwy Elev: 71 hPa	Trans level: FL 150		Trans alt: 13000'
Special Aircrew & Aft Certification Required.					MSA DAM VOR



Gnd speed-Kts	70	90	100	120	140	160	HIALS-II PAPI 225° hdg 5000' LT ABD 264
GS	3.00°	372	478	531	637	849	

STRAIGHT-IN LANDING RWY 23R
 ABCD
RA 103'
 DA(H) **2095'(100')**

RVR 350m

FOR FLIGHT SIMULATION USE ONLY!

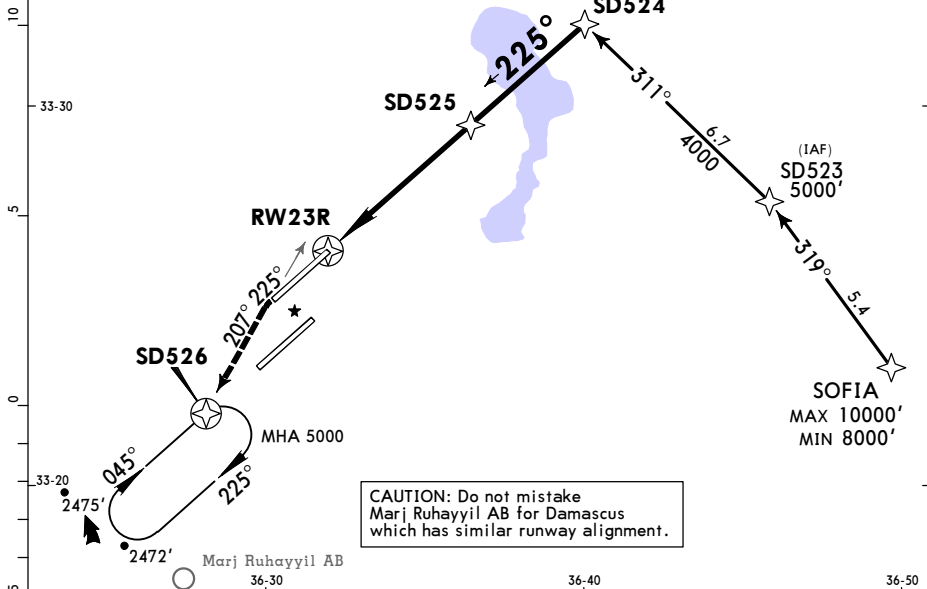
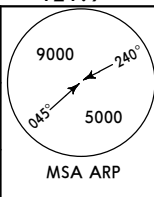
PANS OPS

OSDI/DAM
DAMASCUS INTL

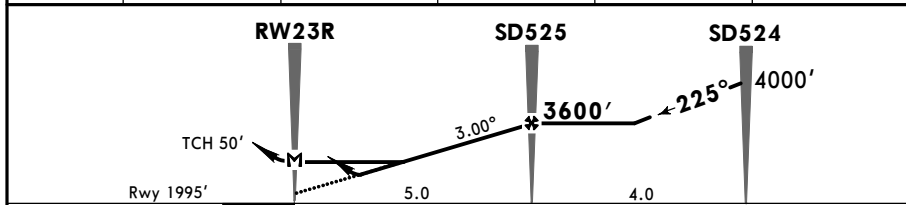
JEPPESEN
19 JUL 19 **(12-1)**

DAMASCUS, SYRIA
RNAV (GNSS) Rwy 23R

ATIS 128.225		DAMASCUS Control (APP) 120.0		DAMASCUS Radar 121.3		DAMASCUS Tower 118.5		Ground 121.9	
RNAV		Final Apch Crs 225°		Minimum Alt SD525 3600' (1605')		LNAV/VNAV DA(H) 2250' (255')		Apt Elev 2020' Rwy 1995'	
MISSED APCH: Climb on 225°. Intercept R-027 inbound climbing direct to SD526 at 5000', then as directed.									
Alt Set: hPa		Rwy Elev: 71 hPa		Trans level: FL 150		Trans alt: 13000'			
1. Procedure not authorized below 0°C. 2. If unable to continue RNAV (GNSS), request suitable IAP from controller.									



DIST to RW23R	1.0	2.0	3.0	4.0	5.0
ALTITUDE	2370'	2690'	3005'	3320'	3640'



Gnd speed-Kts	70	90	100	120	140	160	HIALS-II PAPI 225°	
Descent Angle	3.00°	372	478	531	637	743		849
LNAV/VNAV: MAP at DA								
LNAV: MAP at RW23R								

STRAIGHT-IN LANDING RWY 23R					CIRCLE-TO-LAND	
LNAV/VNAV DA(H) 2250' (255')			LNAV MDA(H) 2270' (275')			
FULL		TDZ or CL out	ALS out	ALS out		
A						
B	RVR 550m VIS 800m	RVR 720m VIS 800m	1200m	RVR 720m VIS 800m	RVR 1500m VIS 1600m	N/A
C						
D				1200m		

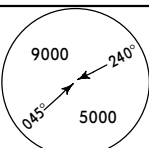
PANS OPS

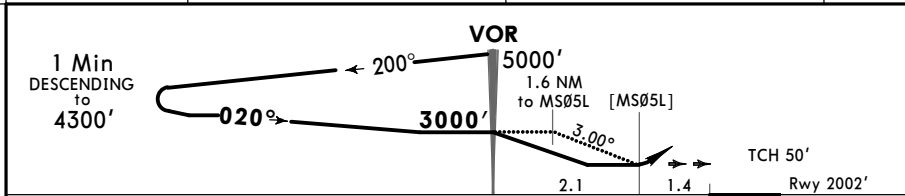
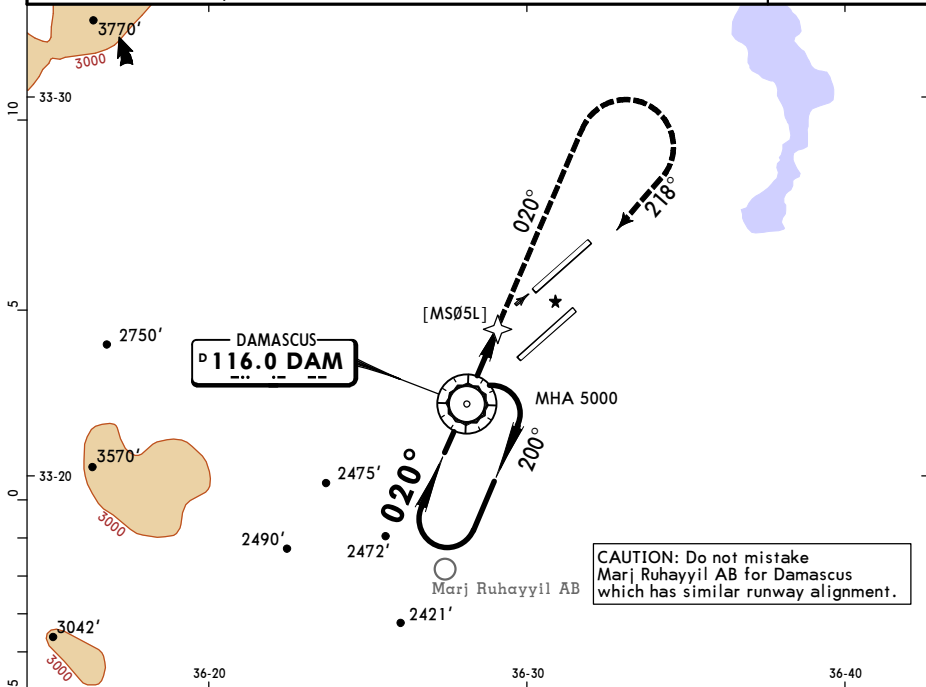
FOR FLIGHT SIMULATION USE ONLY!

OSDI/DAM
DAMASCUS INTL

JEPESEN
19 JUL 19 **(13-1)**

DAMASCUS, SYRIA
VOR Rwy 05L

ATIS 128.225	DAMASCUS Control (APP) 120.0	DAMASCUS Radar 121.3	DAMASCUS Tower 118.5	Ground 121.9
VOR DAM 116.0	Final Appch Crs 020°	Minimum Alt VOR 3000' (998')	MDA(H) 2500' (498')	Apt Elev 2020' Rwy 2002'
MISSED APCH: Climb on R-020, then turn RIGHT to intercept and follow R-038 inbound to VOR climbing to 5000'.				
Alt Set: hPa	Rwy Elev: 71 hPa	Trans level: FL 150	Trans alt: 13000'	MSA DAM VOR



Gnd speed-Kts	70	90	100	120	140	160	ALS PAPI PAPI ↑ on 116.0 R-020
Descent Angle 3.00°	372	478	531	637	743	849	
MAP at MDA							

STRAIGHT-IN LANDING RWY 05L	
MDA(H) 2500' (498')	
ALS out	
A	RVR 1500m
B	VIS 1600m
C	RVR 1800m VIS 2000m
D	2400m

PANS OPS

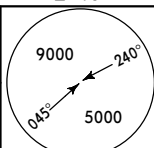
FOR FLIGHT SIMULATION USE ONLY!

OSDI/DAM
DAMASCUS INTL

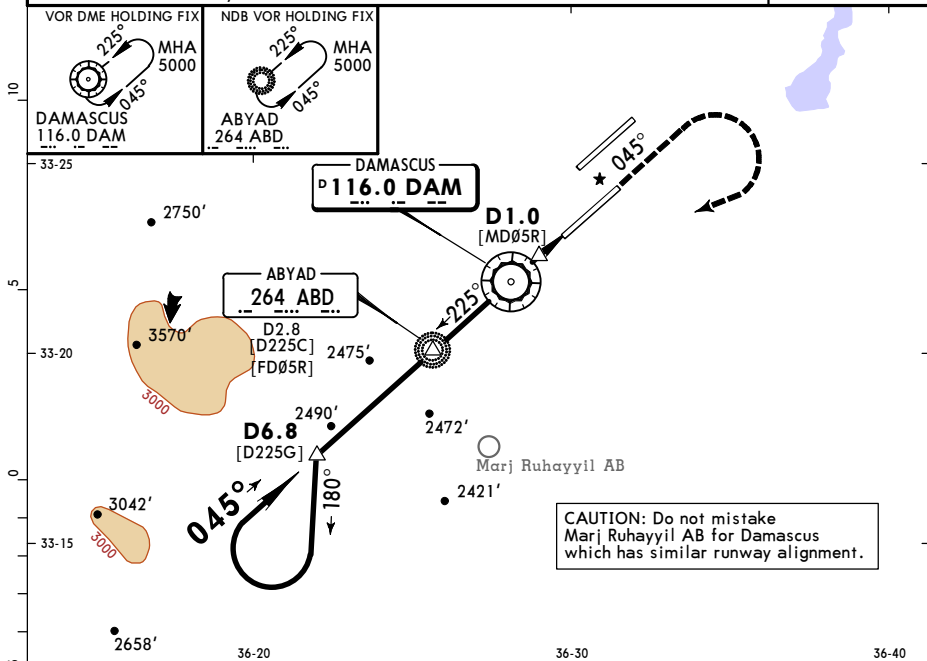
JEPPESEN
19 JUL 19 **(13-2)** VOR DME or NDB VOR Rwy 05R

DAMASCUS, SYRIA
DAMASCUS Tower

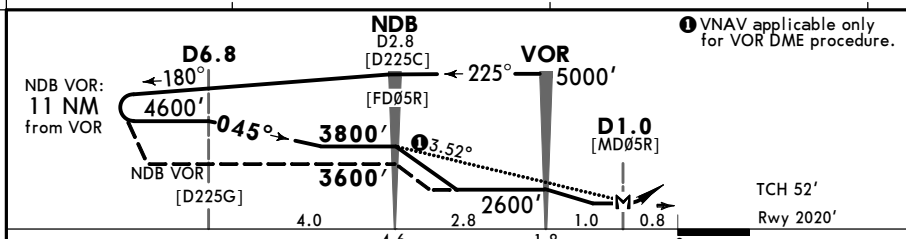
ATIS 128.225		DAMASCUS Control (APP) 120.0		DAMASCUS Radar 121.3		DAMASCUS Tower 118.5		Ground 121.9	
VOR DAM 116.0		Final Appch Crs 045°		Minimum Alt Refer to profile 2400' (380')		MDA(H) 2400' (380')		Apt Elev 2020' Rwy 2020'	
<p>MISSED APCH: Climb on R-045, then climbing turn RIGHT to 5000' and return to VOR. Contact ATC.</p>									
Alt Set: hPa		Rwy Elev: 72 hPa		Trans level: FL 150			Trans alt: 13000'		MSA DAM VOR



FOR FLIGHT SIMULATION USE ONLY!



CAUTION: Do not mistake Marj Ruhayyil AB for Damascus which has similar runway alignment.



Gnd speed-Kts	70	90	100	120	140	160	HIALS-II PAPI	DAM on 116.0 R-045
Descent Angle 3.52°	436	561	623	748	872	997		

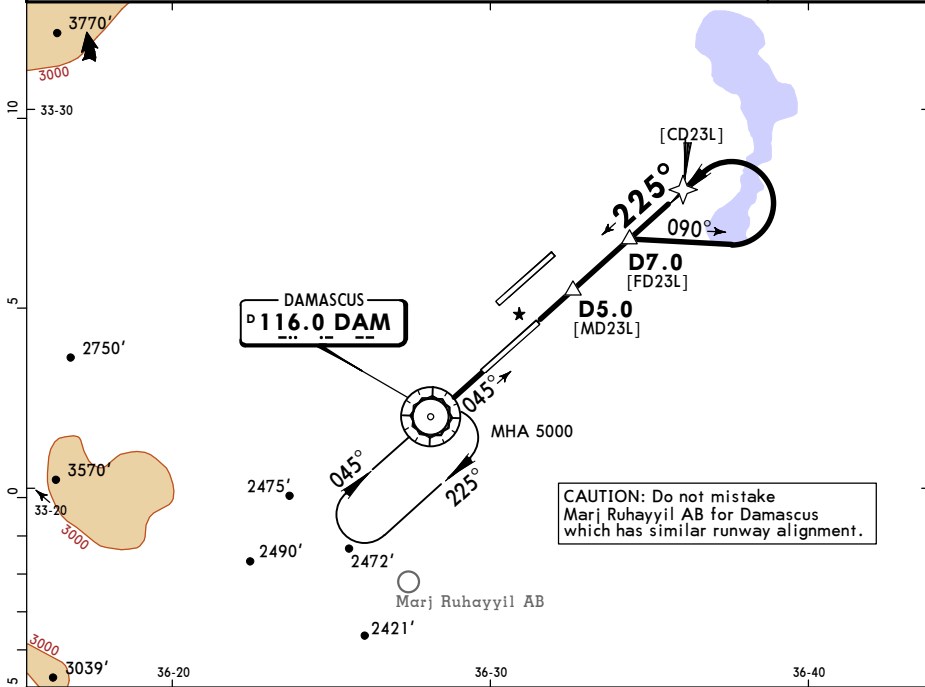
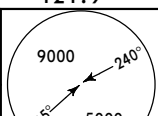
STRAIGHT-IN LANDING RWY 05R	
MDA(H) 2400' (380')	
ALS out	
A	
B	1200m
C	RVR 1500m VIS 1600m
D	RVR 1800m VIS 2000m

OSDI/DAM
DAMASCUS INTL

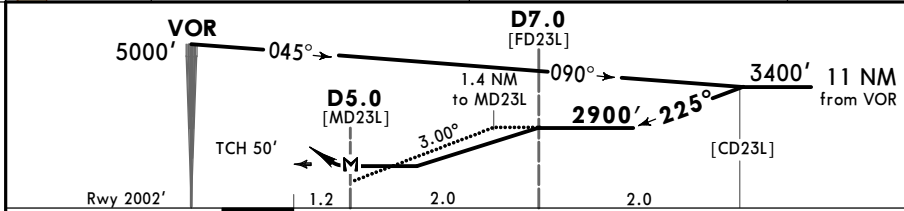
JEPPESEN
19 JUL 19 **(13-3)**

DAMASCUS, SYRIA
VOR DME Rwy 23L

ATIS 128.225	DAMASCUS Control (APP) 120.0	DAMASCUS Radar 121.3	DAMASCUS Tower 118.5	Ground 121.9
VOR DAM 116.0	Final Apch Crs 225°	Minimum Alt D7.0 2900' (898')	MDA(H) 2500' (498')	Apt Elev 2020' Rwy 2002'
MISSED APCH: Proceed to VOR climbing to 5000' and contact ATC.				
Alt Set: hPa		Rwy Elev: 71 hPa	Trans level: FL 150	Trans alt: 13000'
				MSA DAM VOR



CAUTION: Do not mistake Marj Ruhayyil AB for Damascus which has similar runway alignment.



Gnd speed-Kts	70	90	100	120	140	160	HIALS PAPI DAM 116.0 5000'
Descent Angle 3.00°	372	478	531	637	743	849	
MAP at D5.0							

STRAIGHT-IN LANDING RWY 23L	
MDA(H) 2500' (498')	
ALS out	
A	
B	2200m
C	
D	2400m

PANS OPS

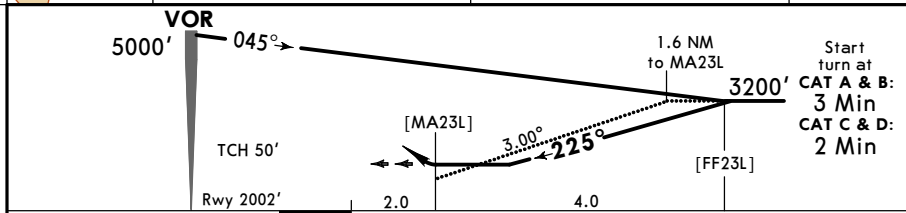
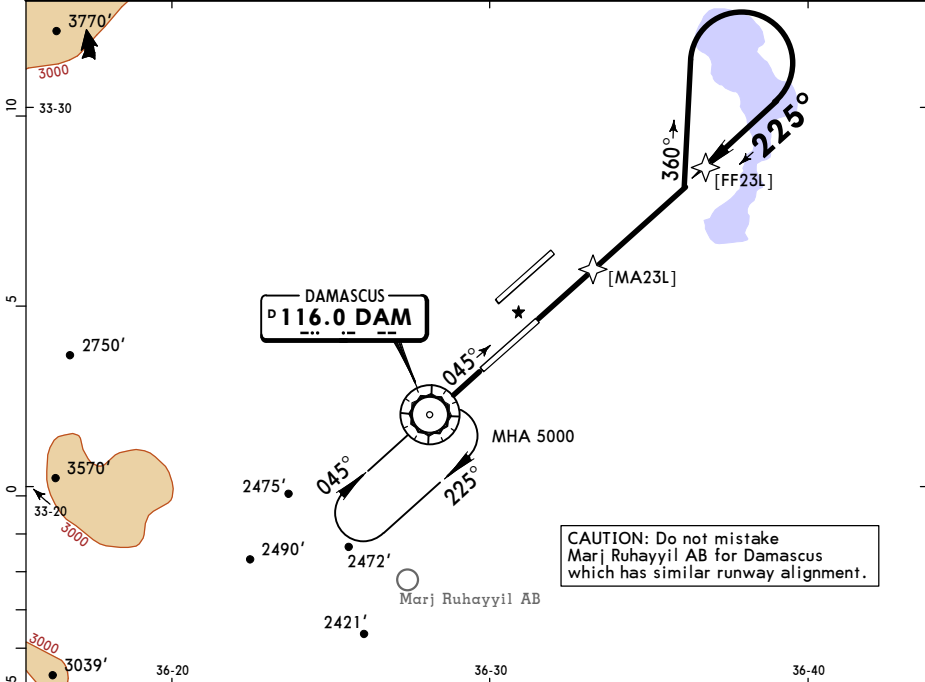
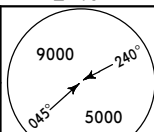
FOR FLIGHT SIMULATION USE ONLY!

OSDI/DAM
DAMASCUS INTL

JEPPESEN
19 JUL 19 **(13-4)**

DAMASCUS, SYRIA
VOR Rwy 23L

ATIS 128.225	DAMASCUS Control (APP) 120.0	DAMASCUS Radar 121.3	DAMASCUS Tower 118.5	Ground 121.9
VOR DAM 116.0	Final Apch Crs 225°	No FAF	MDA(H) 2700' (698')	Apt Elev 2020' Rwy 2002'
MISSED APCH: Proceed to VOR climbing to 5000' and contact ATC.				
Alt Set: hPa		Rwy Elev: 71 hPa	Trans level: FL 150	Trans alt: 13000'
				MSA DAM VOR



Gnd speed-Kts	70	90	100	120	140	160	HIALS PAPI DAM 116.0 5000'
Descent Angle 3.00°	372	478	531	637	743	849	
MAP at MDA							

STRAIGHT-IN LANDING RWY 23L	
MDA(H) 2700' (698')	
ALS out	
A	1200m
B	RVR 1500m VIS 1600m
C	3200m
D	3600m

PANS OPS

FOR FLIGHT SIMULATION USE ONLY!

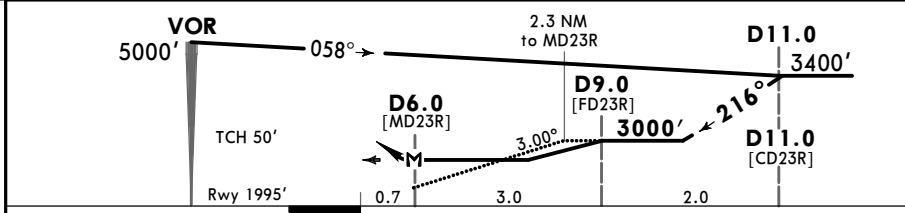
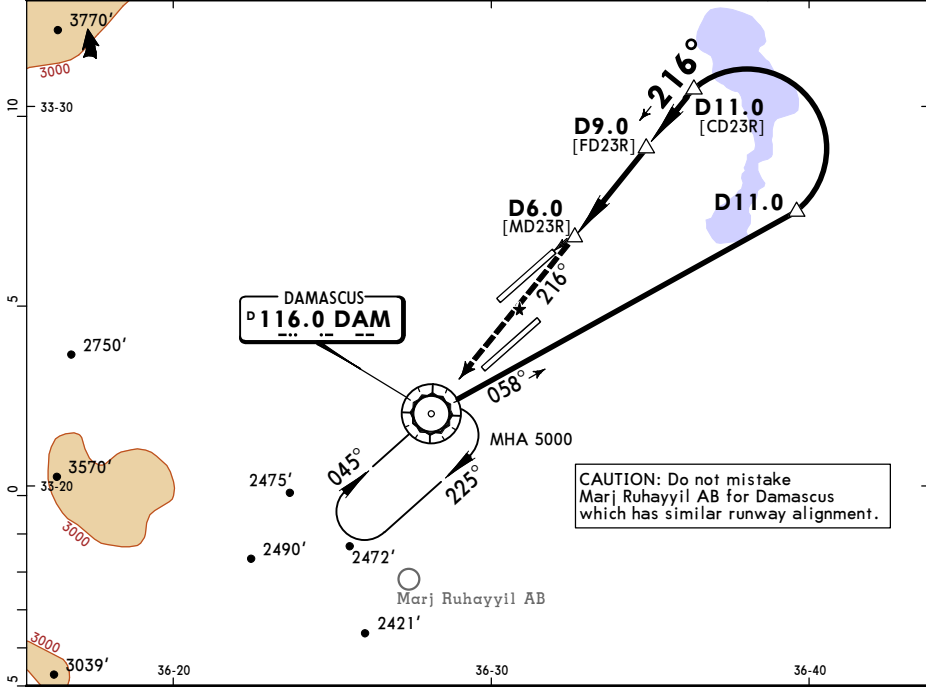
OSDI/DAM
DAMASCUS INTL

JEPPESSEN
19 JUL 19 **(13-5)**

DAMASCUS, SYRIA
VOR DME Rwy 23R

ATIS 128.225	DAMASCUS Control (APP) 120.0	DAMASCUS Radar 121.3	DAMASCUS Tower 118.5	Ground 121.9
VOR DAM 116.0	Final Apch Crs 216°	Minimum Alt D9.0 3000' (1005')	MDA(H) 2500' (505')	Apt Elev 2020' Rwy 1995'
MISSED APCH: Proceed to VOR on R-036 climbing to 5000' and contact ATC.				
Alt Set: hPa	Rwy Elev: 71 hPa	Trans level: FL 150	Trans alt: 13000'	
Procedure based on MAX 264 KT.				

MSA DAM VOR



Gnd speed-Kts	70	90	100	120	140	160	HIALS-II PAPI 	DAM 116.0 R-036	5000' ↑	
Descent Angle	3.00°	372	478	531	637	743				849
MAP at D6.0										

STRAIGHT-IN LANDING RWY 23R		
MDA(H) 2500' (505')		
ALS out		
A	RVR 720m	RVR 1500m
B	VIS 800m	VIS 1600m
C	RVR 1500m	2400m
D	VIS 1600m	

PANS OPS

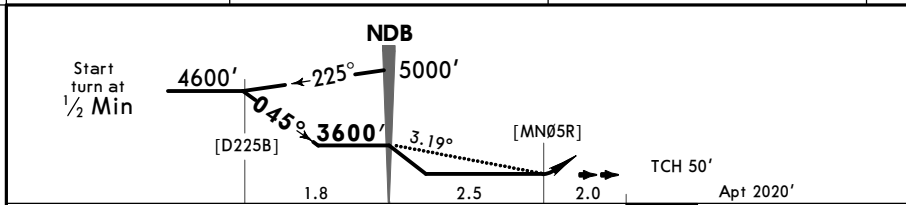
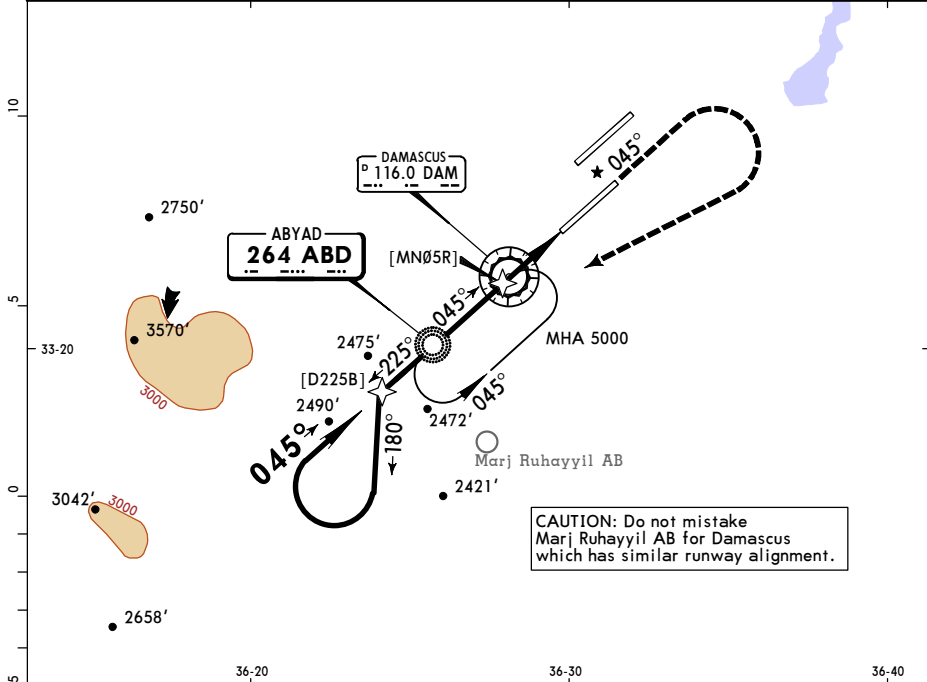
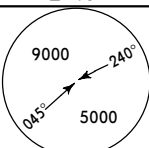
FOR FLIGHT SIMULATION USE ONLY!

OSDI/DAM
DAMASCUS INTL

JEPPESSEN
19 JUL 19 **(16-1)**

DAMASCUS, SYRIA
NDB Rwy 05R

ATIS 128.225		DAMASCUS Control (APP) 120.0		DAMASCUS Radar 121.3		DAMASCUS Tower 118.5		Ground 121.9	
NDB ABD 264		Final Appch Crs 045°		Minimum Alt NDB 3600' (1580')		MDA(H) 2700' (680')		Apt Elev 2020'	
<p>MISSED APCH: Climb on 045°, then climbing turn RIGHT to 5000' and return to NDB. Contact ATC.</p>									
Alt Set: hPa		Apt Elev: 72 hPa		Trans level: FL 150			Trans alt: 13000'		MSA ABD NDB



Gnd speed-Kts	70	90	100	120	140	160	HIALS-II PAPI 045° 5000' ABD 264
Descent Angle	3.19°	395	508	564	677	790	
MAP at MDA							

STRAIGHT-IN LANDING RWY 05R	
MDA(H) 2700' (680')	
ALS out	
A	
B	1200m
C	3200m
D	3600m
	RVR 1500m VIS 1600m

PANS OPS

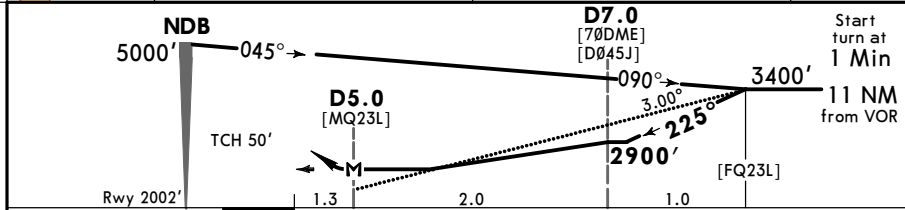
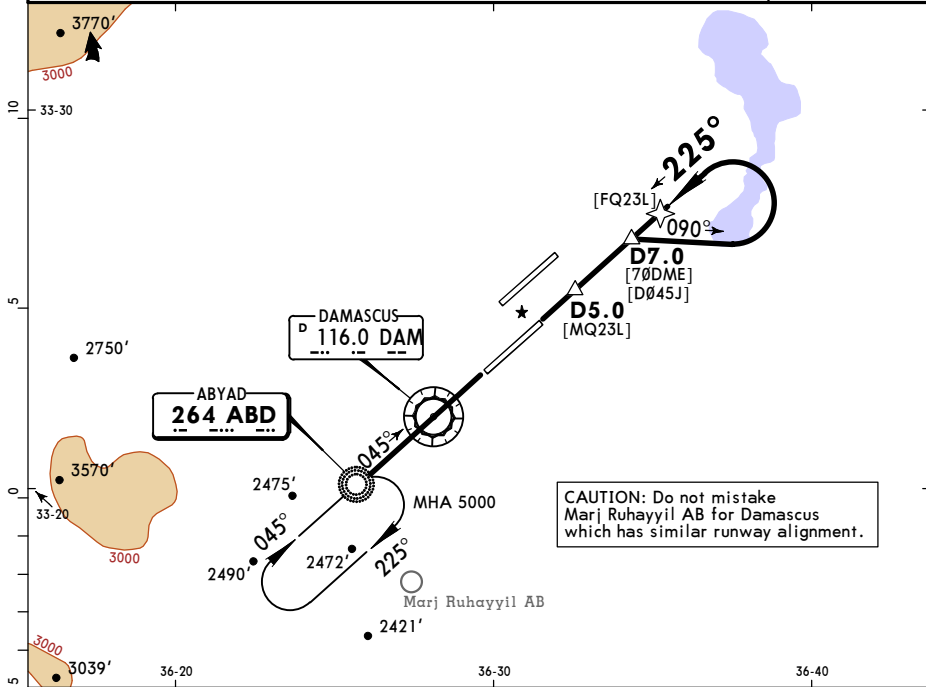
FOR FLIGHT SIMULATION USE ONLY!

OSDI/DAM
DAMASCUS INTL

JEPPESSEN
19 JUL 19 **(16-2)**

DAMASCUS, SYRIA
NDB DME Rwy 23L

ATIS 128.225	DAMASCUS Control (APP) 120.0	DAMASCUS Radar 121.3	DAMASCUS Tower 118.5	Ground 121.9
NDB ABD 264	Final Apch Crs 225°	Minimum Alt D7.0 2900' (898')	MDA(H) 2700' (698')	Apt Elev 2020' Rwy 2002'
MISSED APCH: Proceed to NDB climbing to 5000' and contact ATC.				
Alt Set: hPa	Rwy Elev: 71 hPa	Trans level: FL 150	Trans alt: 13000'	



Gnd Speed-Kts	70	90	100	120	140	160		ABD 264	5000'
Descent Angle 3.00°	372	478	531	637	743	849		↑	↑
MAP at D5.0									

STRAIGHT-IN LANDING RWY 23L	
MDA(H) 2700' (698')	
ALS out	
A	
B	2400m
C	3200m
D	3600m

PANS OPS

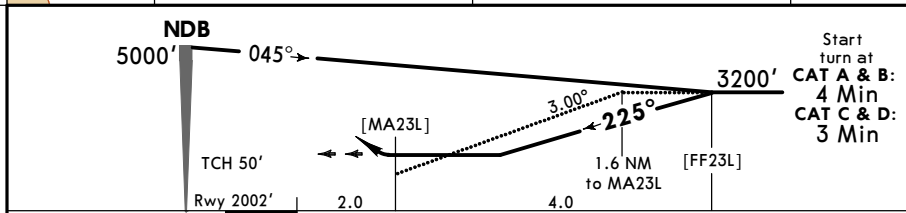
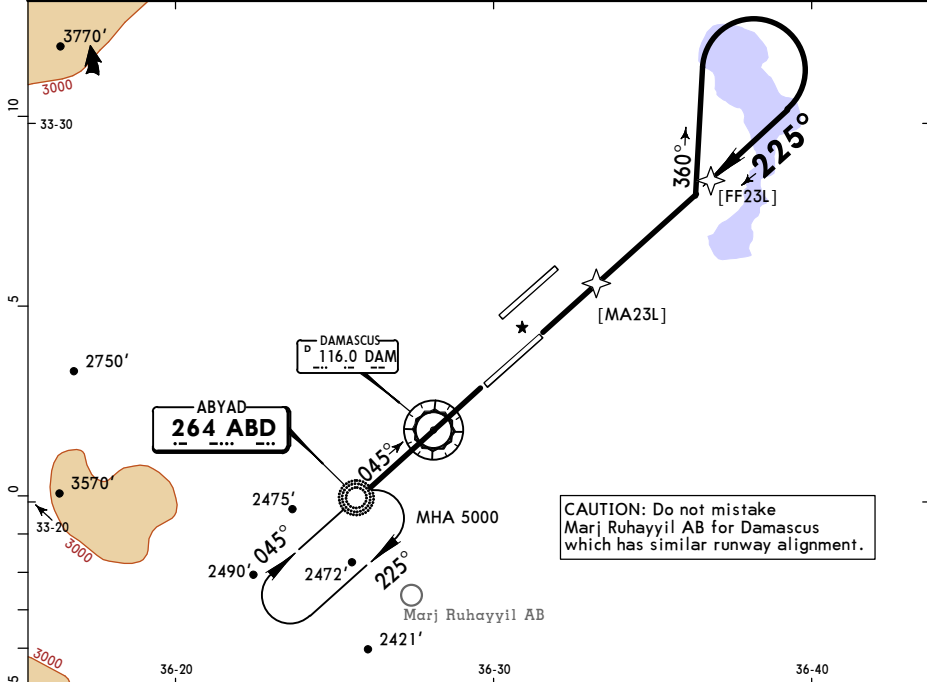
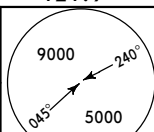
FOR FLIGHT SIMULATION USE ONLY!

OSDI/DAM
DAMASCUS INTL

JEPPESEN
19 JUL 19 **(16-3)**

DAMASCUS, SYRIA
NDB Rwy 23L

ATIS 128.225	DAMASCUS Control (APP) 120.0	DAMASCUS Radar 121.3	DAMASCUS Tower 118.5	Ground 121.9
NDB ABD 264	Final Apch Crs 225°	No FAF	MDA(H) 2700' (698')	Apt Elev 2020' Rwy 2002'
MISSED APCH: Proceed to NDB climbing to 5000' and contact ATC.				
Alt Set: hPa	Rwy Elev: 71 hPa	Trans level: FL 150	Trans alt: 13000'	MSA ABD NDB



Gnd speed-Kts	70	90	100	120	140	160	HIALS PAPI	ABD 264	5000'
Descent Angle 3.00°	372	478	531	637	743	849		↑	↑
MAP at MDA									

STRAIGHT-IN LANDING RWY 23L	
MDA(H) 2700' (698')	
ALS out	
A	RVR 1500m
B	1200m VIS 1600m
C	3200m
D	3600m

PANS OPS

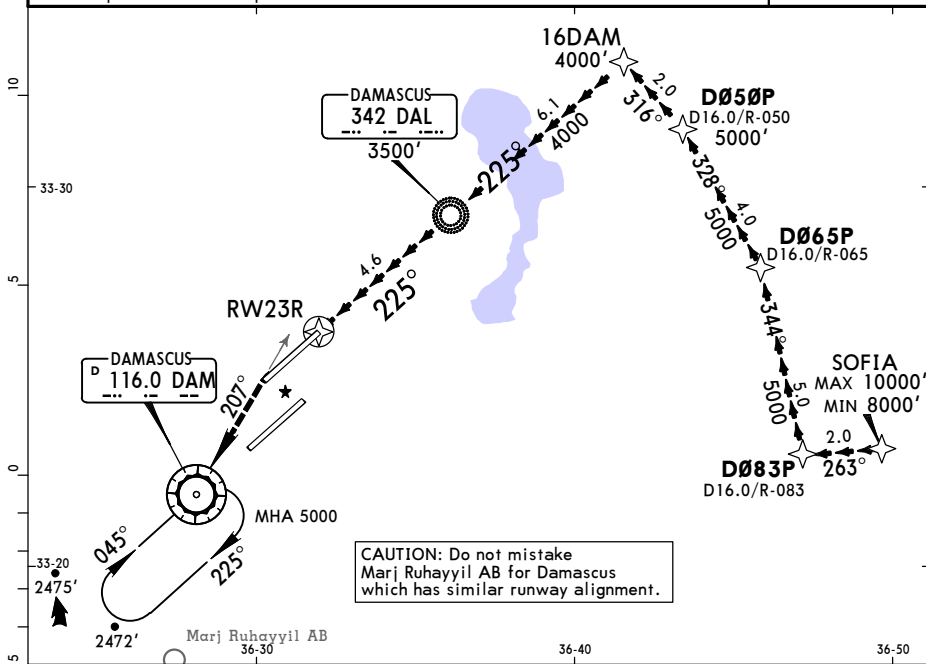
FOR FLIGHT SIMULATION USE ONLY!

OSDI/DAM
DAMASCUS INTL

JEPPESEN
19 JUL 19 (19-10)

DAMASCUS, SYRIA
RNAV VISUAL Rwy 23R

ATIS 128.225	DAMASCUS Control (APP) 120.0	DAMASCUS Radar 121.3	DAMASCUS Tower 118.5	Ground 121.9
NAVAIDS-Refer to Planview	Final Apch Crs 225°	No FAF	No MDA(H) published	Apt Elev 2020'
MISSED APCH: Climb on 225°, intercept R-027 inbound VOR climbing to 5000'.				
Alt Set: hPa	Apt Elev: 72 hPa	Trans level: FL 150	Trans alt: 13000'	
GNSS required. RNP 0.3 required.				



Route description

SOFIA D083P D065P D050P 16DAM DAL NDB RW23R

Descent point for 3.00° continuous descent approach to RWY 23R is approximately at 6.1 NM from RW23R.

Conditions

- Select RNAV VISUAL Rwy 23R from Nav Database.
- Pilots request "Visual approach 23R".
- Pilots must acquire/maintain visual reference to terrain not later than waypoint 16DAM.
- At DAL NDB latest, report "RWY in sight".

				HIALS-II PAPI	225° ↑	5000' LT	DAM 116.0 R-027
--	--	--	--	------------------	-----------	-------------	-----------------------

PANS OPS

MINIMUMS NOT PUBLISHED

FOR FLIGHT SIMULATION USE ONLY!