

ORMM/BSR

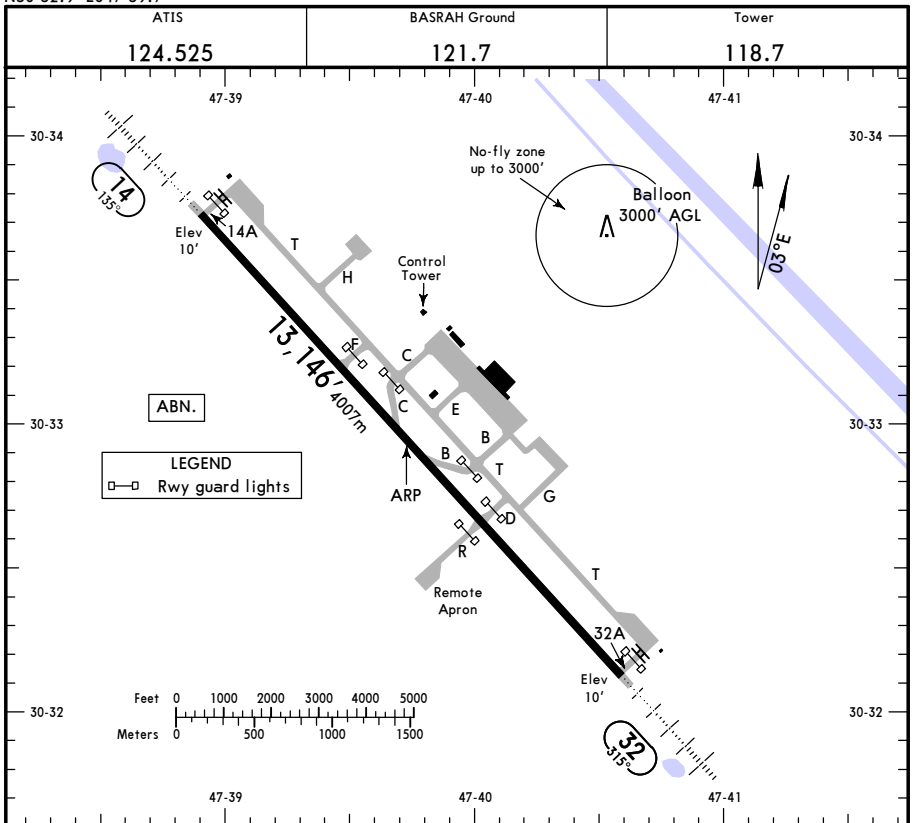
Apt Elev **11'**
N30 32.9 E047 39.7

JEPPesen

10 AUG 18 **(10-9)** Eff 16 Aug

BASRAH, IRAQ

BASRAH INTL



ADDITIONAL RUNWAY INFORMATION

RWY	USABLE LENGTHS	LANDING BEYOND	TAKE-OFF	WIDTH
14 32	RL (60m) CL (30m) HIALS SFL TDZ PAPI-L (3.0°)	12,113' 3692m		148' 45m

TAKE-OFF

**AIR CARRIER (JAA)
All Rwys**

LVP must be in force

	RL & CL	RCLM (DAY only) or RL	RCLM (DAY only) or RL
A	200m	250m	400m
B			
C			
D	250m	300m	

FOR FLIGHT SIMULATION USE ONLY!

ORMM/BSR



9 MAR 12 **10-9S**

Standard

BASRAH, IRAQ
BASRAH INTL

STRAIGHT-IN RWY		A	B	C	D
14	VOR ①	390' (379') ceiling 400'- 1000m	390' (379') ceiling 400'- 1000m	390' (379') ceiling 400'- 1000m	390' (379') ceiling 400'- 1600m
	ALS out	ceiling 400'- 1600m	ceiling 400'- 1600m	ceiling 400'- 1700m	ceiling 400'- 2000m
32	ILS	225' (215') ceiling 200'- 800m	225' (215') ceiling 200'- 800m	225' (215') ceiling 200'- 800m	225' (215') ceiling 200'- 800m
	ALS out	ceiling 200'- 1200m	ceiling 200'- 1200m	ceiling 200'- 1600m	ceiling 200'- 1600m
	LOC ①	490' (480') ceiling 500'- 1500m	490' (480') ceiling 500'- 1500m	490' (480') ceiling 500'- 1500m	490' (480') ceiling 500'- 1600m
	ALS out	ceiling 500'- 1600m	ceiling 500'- 1600m	ceiling 500'- 2200m	ceiling 500'- 2400m
	VOR ①	490' (479') ceiling 500'- 1500m	490' (479') ceiling 500'- 1500m	490' (479') ceiling 500'- 1500m	490' (479') ceiling 500'- 1600m
	ALS out	ceiling 500'- 1600m	ceiling 500'- 1600m	ceiling 500'- 2200m	ceiling 500'- 2400m

① Continuous Descent Final Approach.

CIRCLE-TO-LAND ②	90 KT	120 KT	140 KT	165 KT
	530' (519') ceiling 600'- V1900m	530' (519') ceiling 600'- V2800m	730' (719') ceiling 800'- V3700m	730' (719') ceiling 800'- V4600m

② Not authorized East of rwy.

TAKE-OFF RWY 14, 32

LVP must be in force					
	RL, CL & mult. RVR req	RL & CL	RCLM (DAY only) or RL	RCLM (DAY only) or RL	NIL (DAY only)
A					
B	150m	200m	250m	400m	500m
C					
D	200m	250m	300m		

FOR FLIGHT SIMULATION USE ONLY!

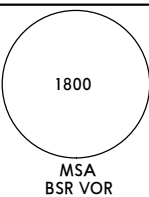
ORMM/BSR
BASRAH INTL

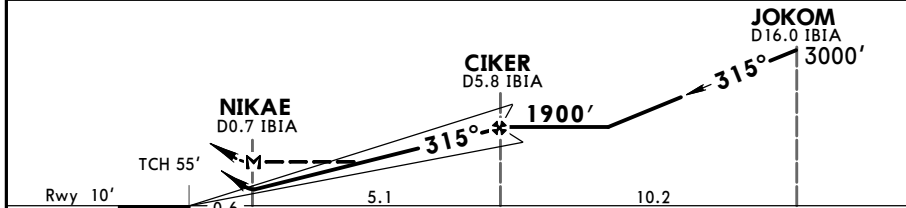
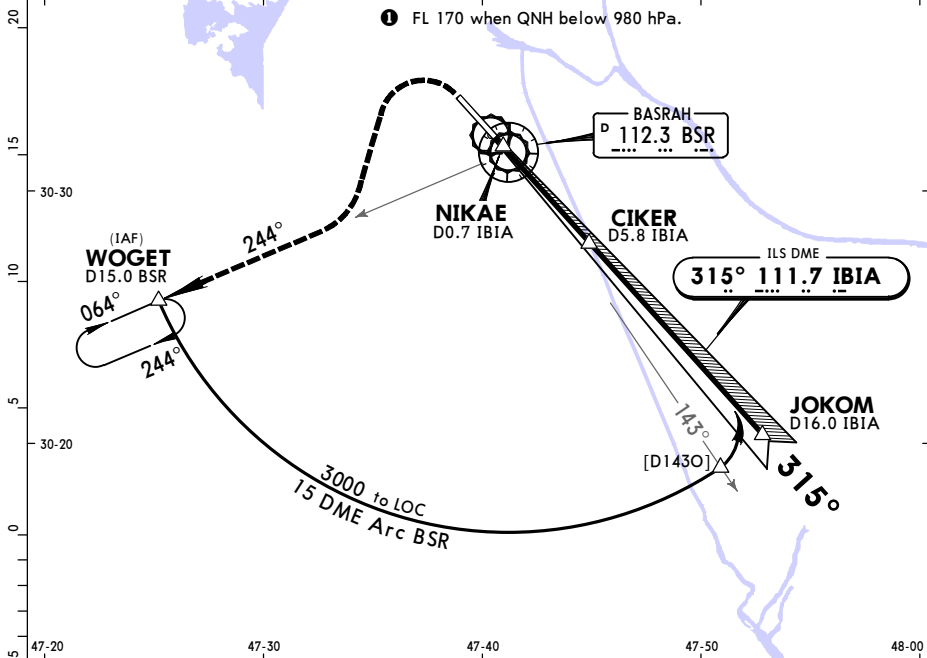
JEPPESSEN

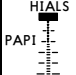
10 AUG 18

(11-1) Eff 16 Aug

BASRAH, IRAQ
ILS or LOC Rwy 32

ATIS 124.525		BAGHDAD Approach 120.2 124.0		BASRAH Tower 118.7		Ground 121.7			
LOC IBIA 111.7	Final Apch Crs 315°	GS CIKER 1900' (1890')	ILS DA(H) 225' (215')	Apt Elev 11' Rwy 10'					
MISSED APCH: Climb to 500', then climbing turn LEFT to 3000' via R-244 BSR to WOGET/D15.0 BSR and hold. Do not turn prior MAP.									
Alt Set: hPa Rwy Elev: 0 hPa Trans level: FL 160 1 Trans alt: 14000' RADAR and DME required.									



Gnd speed-Kts	70	90	100	120	140	160		500' ↑	3000' ↶ via 112.3 LT R-244	BSR						
ILS GS or LOC Desc Angle	3.00°										372	478	531	637	743	849
MAP at NIKAE/D0.7 IBIA																

STRAIGHT-IN LANDING RWY 32						CEILING REQUIRED		CIRCLE-TO-LAND Not authorized East of rwy	
ILS DA(H) 225' (215')			LOC (GS out) MDA(H) 490' (480')						
FULL		TDZ or CL out	ALS out	ALS out	ALS out	Max Kts	MDA(H)	CEIL-VIS	
A			200' · 1200m	500' · 800m	500' · 1600m	90	530' (519')	600' · 1900m	
B						120	530' (519')	600' · 2800m	
C	200' · 800m			500' · 1200m	500' · 2000m	140	730' (719')	800' · 3700m	
D			200' · 1600m	500' · 1600m	500' · 2400m	165	730' (719')	800' · 4600m	

TERPS

FOR FLIGHT SIMULATION USE ONLY!

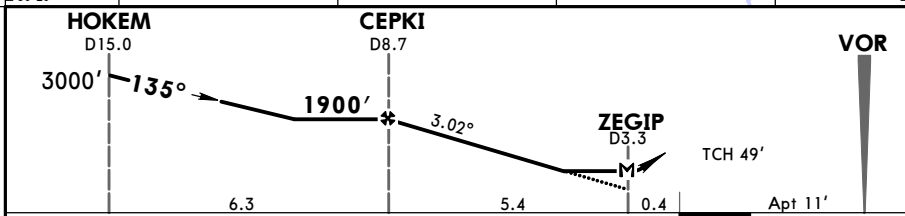
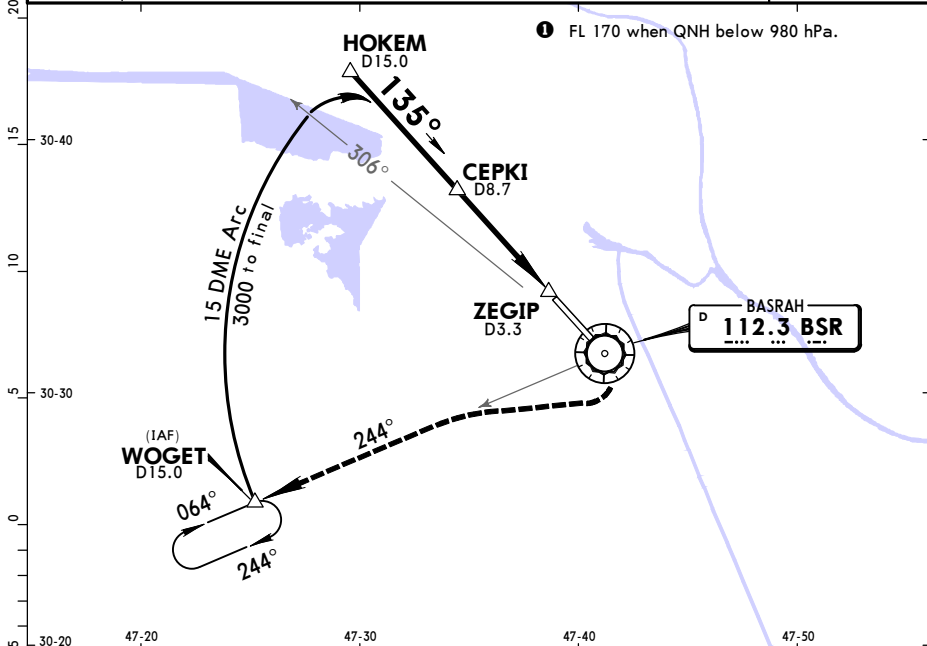
**ORMM/BSR
BASRAH INTL**

JEPPESEN

10 AUG 18 (13-1) Eff 16 Aug

**BASRAH, IRAQ
VOR DME Rwy 14**

ATIS 124.525		BAGHDAD Approach 120.20 124.0		BASRAH Tower 118.70		Ground 121.70	
VOR BSR 112.3	Final Apch Crs 135°	Minimum Alt CEPKI 1900' (1889')		MDA(H) 390' (379')	Apt Elev 11'		<p>1800</p> <p>MSA BSR VOR</p>
<p>MISSED APCH: Climb to 3000'. Climb direct to VOR, then turn RIGHT via R-244 to WOGET (D15.0/R-244) and hold.</p>							
<p>Alt Set: hPa Apt Elev: 0 hPa Trans level: FL 160 1 Trans alt: 14000'</p> <p>RADAR required.</p>							



Gnd speed-Kts	70	90	100	120	140	160			3000' ↑
Descent Angle	3.02°	374	481	534	641	748			
MAP at ZEGIP/D3.3									

STRAIGHT-IN LANDING RWY 14				CEILING REQUIRED		CIRCLE-TO-LAND			
MDA(H) 390' (379')						Not authorized East of rwy			
		ALS out		Max Kts	MDA(H)	CEIL-VIS			
A					90	530' (519')	600'· 1900m		
B	400'· 800m		400'· 1600m		120	530' (519')	600'· 2800m		
C					140	730' (719')	800'· 3700m		
D	400'· 1600m		400'· 2000m		165	730' (719')	800'· 4600m		

FOR FLIGHT SIMULATION USE ONLY!

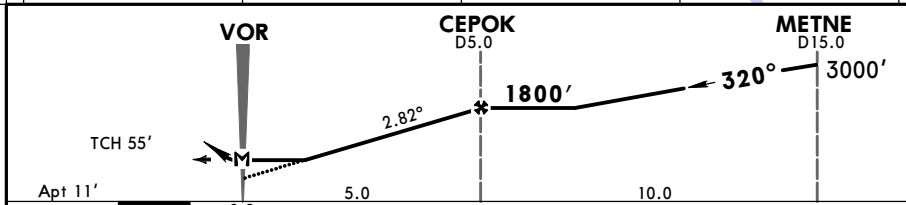
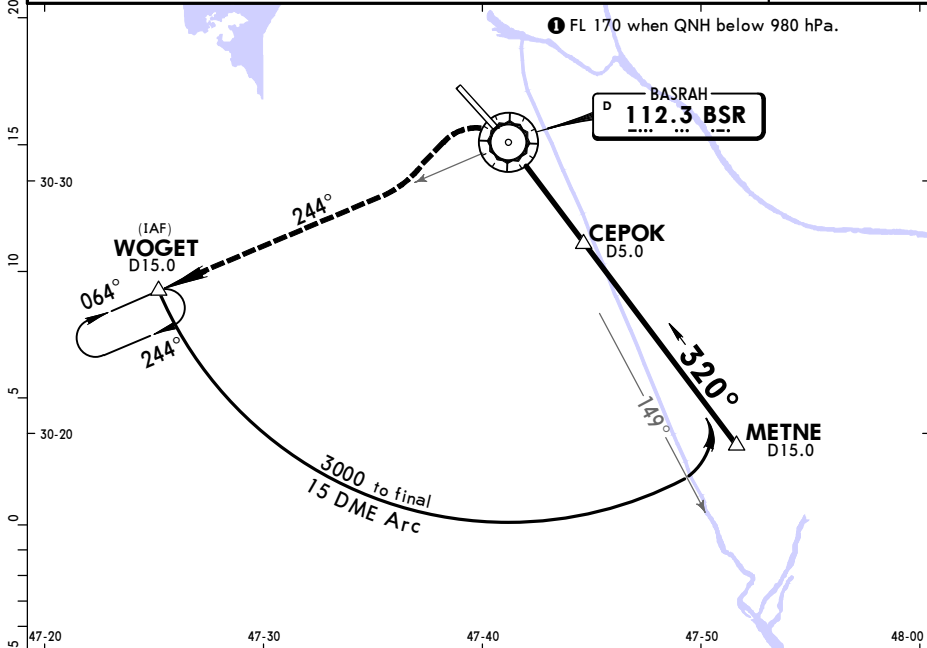
**ORMM/BSR
BASRAH INTL**



**BASRAH, IRAQ
VOR DME Rwy 32**

10 AUG 18 (13-2) Eff 16 Aug

ATIS 124.525		BAGHDAD Approach 120.20 124.0		BASRAH Tower 118.70		Ground 121.70	
VOR BSR 112.3	Final Apch Crs 320°	Minimum Alt CEPOK 1800' (1789')		MDA(H) 490' (479')	Apt Elev 11'		 MSA BSR VOR
MISSED APCH: Climbing turn LEFT to 3000' via R-244 to WOGET (D15.0/R-244) and hold.							
Alt Set: hPa		Apt Elev: 0 hPa		Trans level: FL 160 ①		Trans alt: 14000'	
RADAR required.							



Gnd speed-Kts	70	90	100	120	140	160	HIALS PAPI	3000' BSR via 112.3 R-244 LT WOGET
Descent Angle	2.82°	349	449	499	599	698		
MAP at VOR								

STRAIGHT-IN LANDING RWY 32			CEILING REQUIRED		CIRCLE-TO-LAND	
MDA(H) 490' (479')			ALS out		Not authorized East of rwy	
A	500'· 800m	500'· 1600m	Max Kts	90	530' (519')	600'· 1900m
B	500'· 800m	500'· 1600m	120	530' (519')	600'· 2800m	
C	500'· 1200m	500'· 2000m	140	730' (719')	800'· 3700m	
D	500'· 1600m	500'· 2400m	165	730' (719')	800'· 4600m	

CHANGES: Transition level. Note withdrawn.

FOR FLIGHT SIMULATION USE ONLY!