

ORBR

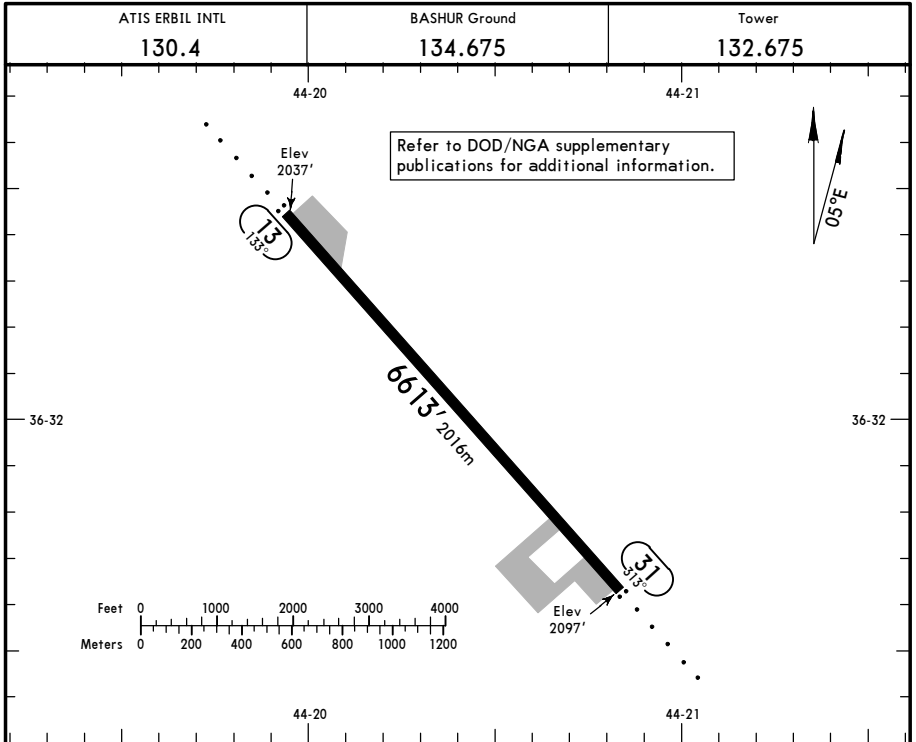
Apt Elev **2097'**
N36 32.0 E044 20.4

JEPPESEN

17 MAY 19 **(30-9)**

BASHUR AB

BASHUR, IRAQ



ADDITIONAL RUNWAY INFORMATION

RWY		USABLE LENGTHS			WIDTH
		LANDING BEYOND		TAKE-OFF	
		Threshold	Glide Slope		
13	ODALS				128' 39m
31					

TAKE-OFF

	All Rwy's	
	Adequate Vis Ref	STD
1 & 2 Eng	1/4	1
3 & 4 Eng		1/2

FOR FLIGHT SIMULATION USE ONLY!

ORBR
BASHUR, IRAQ

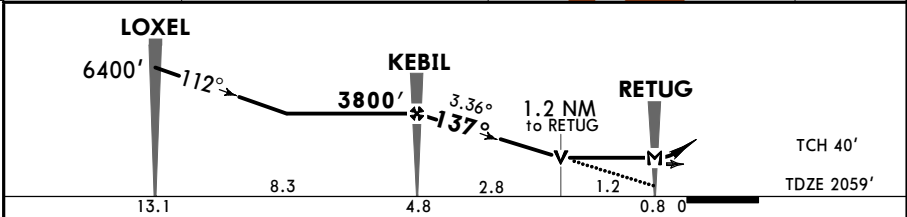
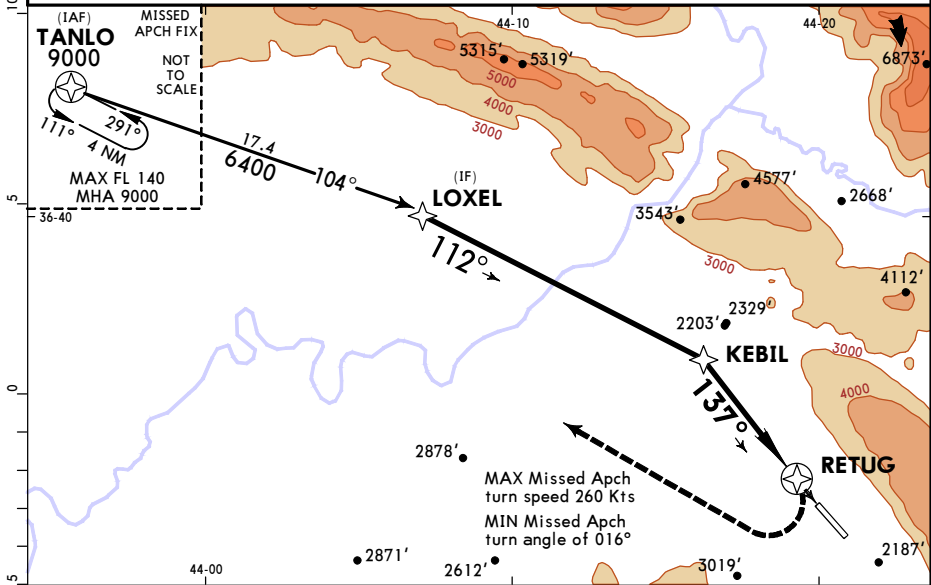


BASHUR AB
RNAV (GPS) Rwy 13

17 MAY 19 **(32-1)**

ERBIL INTL ATIS 130.4		BAGHAD Approach 127.7		BASHUR Tower 132.675		Ground 134.675	
RNAV	Final Apch Crs 137°	Minimum Alt KEBIL 3800' (1741')	LNAV MDA(H) 2800' (741')	Apt Elev 2097'		TDZE 2059'	
MISSED APCH: Climbing to 9000' turn RIGHT direct TANLO and hold. Continue climb-in-hold to 9000' and contact ATC. CAUTION: Missed apch requires a min climb of 470'/NM to 6000'. Controlling obstacle 5712'.							<p>MSA RW13</p>
Gnd speed-Kts		60	120	180	240	300	
V/V (fpm)		470	940	1410	1880	2350	2820

Alt Set: hPa TDZE Elev: 73 hPa Trans level: FL 140 Trans alt: 14000'
 1. CAUTION: Rising terrain northwest through southeast of airfield. 2. EMERG SAFE ALT 100 NM 14,500'.
 3. DME/DME RNP-0.30 not authorized.



Gnd speed-Kts	70	90	100	120	140	160	ODALS 9000' RT TANLO
Descent Angle	3.36°	416	535	595	713	832	

MAP at RW13 Military				STRAIGHT-IN LANDING RWY 13				CIRCLE-TO-LAND			
LNAV								Not Authorized Northeast of Rwy 13/31.			
MDA(H) 2800' (741')								ODALS out			
A	1400m			1600m			Max Kts	MDA(H)			
B	1600m			2000m			90	2800' (703') - 1600m			
C	3300m			3500m			120	2800' (703') - 2000m			
D	3300m			3500m			140	3420' (1323') - 4800m			
	3300m			3500m			165	3800' (1703') - 4800m			

FOR FLIGHT SIMULATION USE ONLY!

TERPS