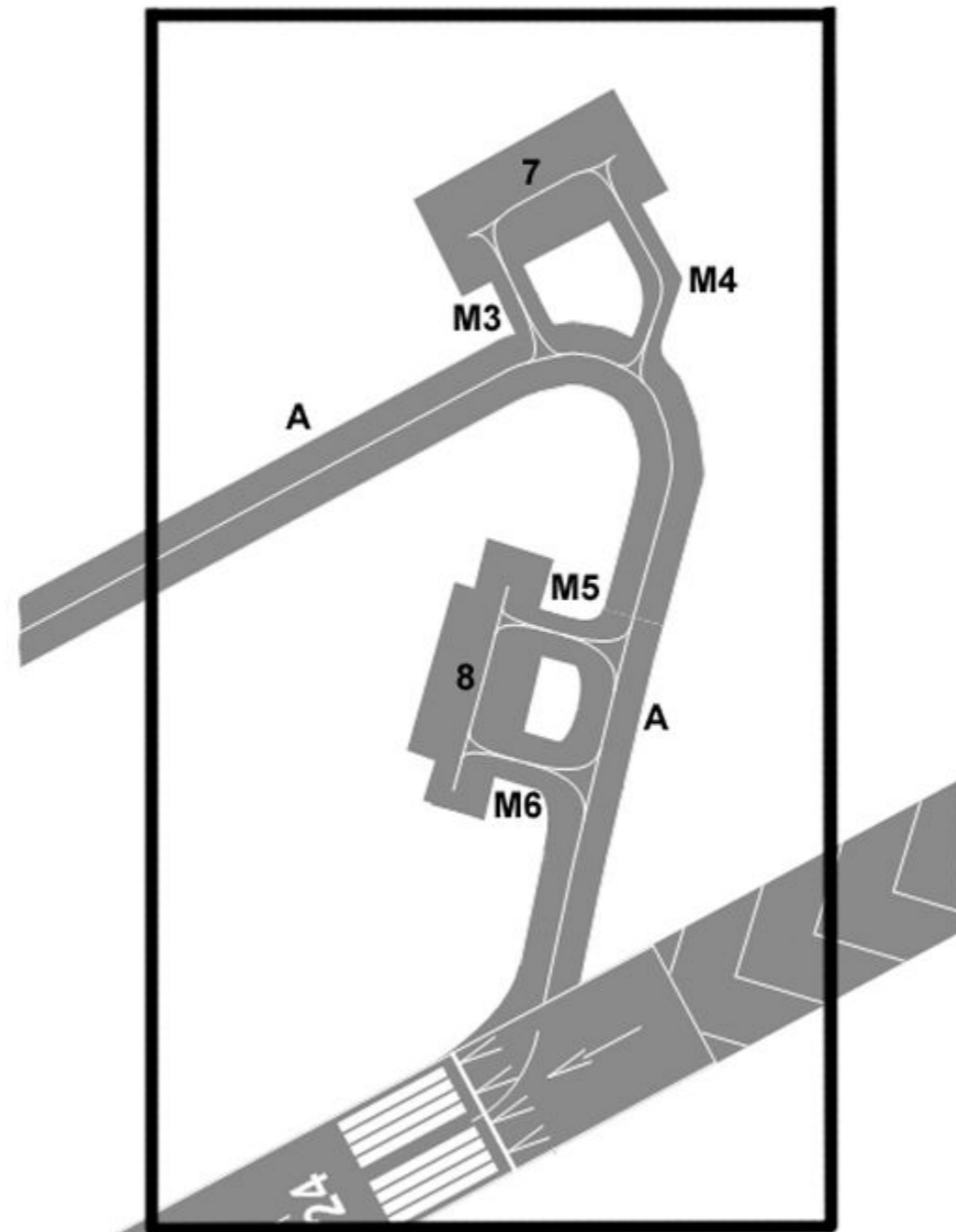
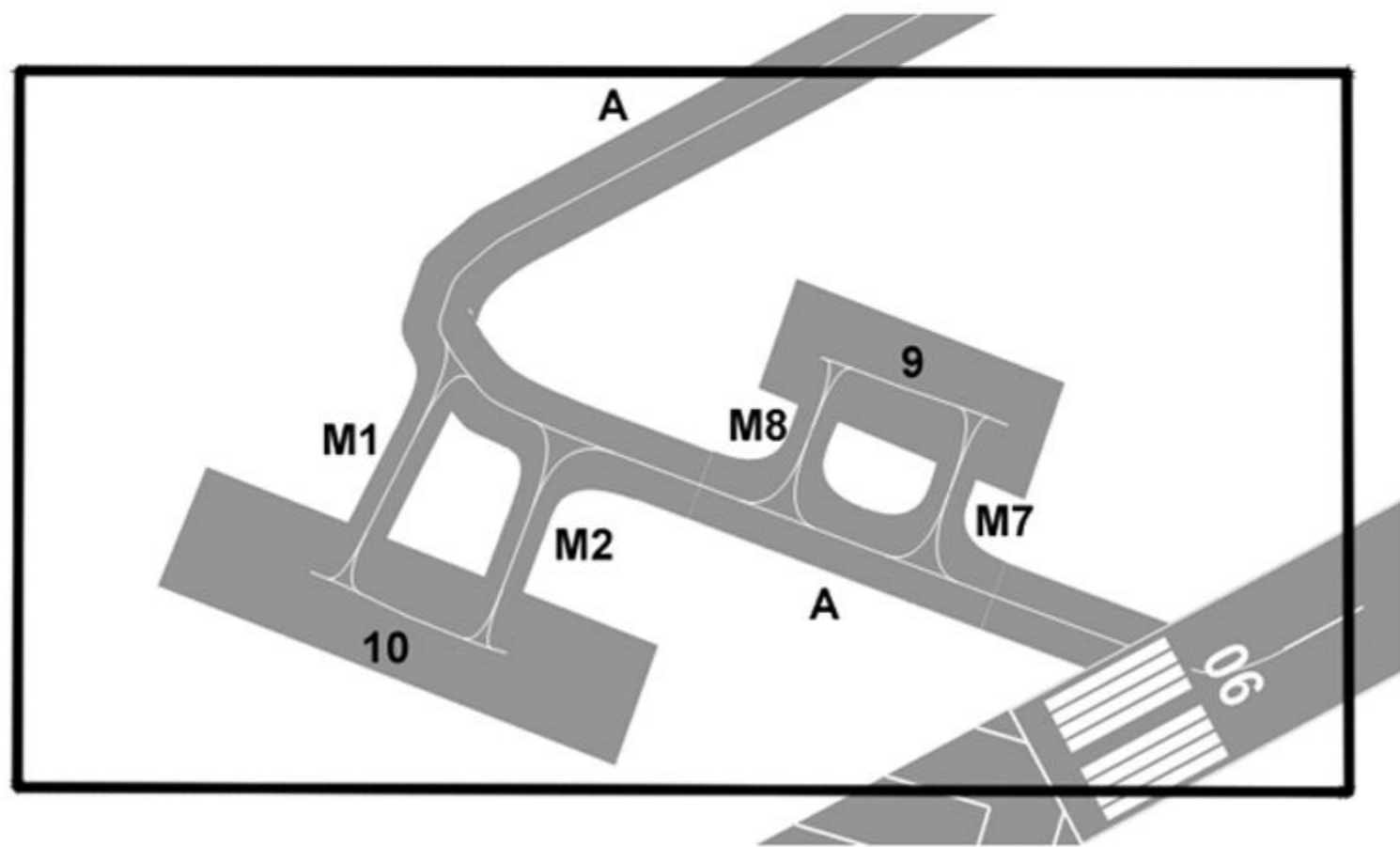


**OLKA,KEY**

Rene Mouawad Airport  
Koleyate, Lebanon  
(LScX-OLKA Scenery)

Intended to be used with  
LScX scenery  
[www.lebanonsceneryx.com](http://www.lebanonsceneryx.com)



Valid for Flight simulation only- do not use for real life navigation

**OLKA,KEY**

Rene Mouawad Airport  
Koleyate, Lebanon

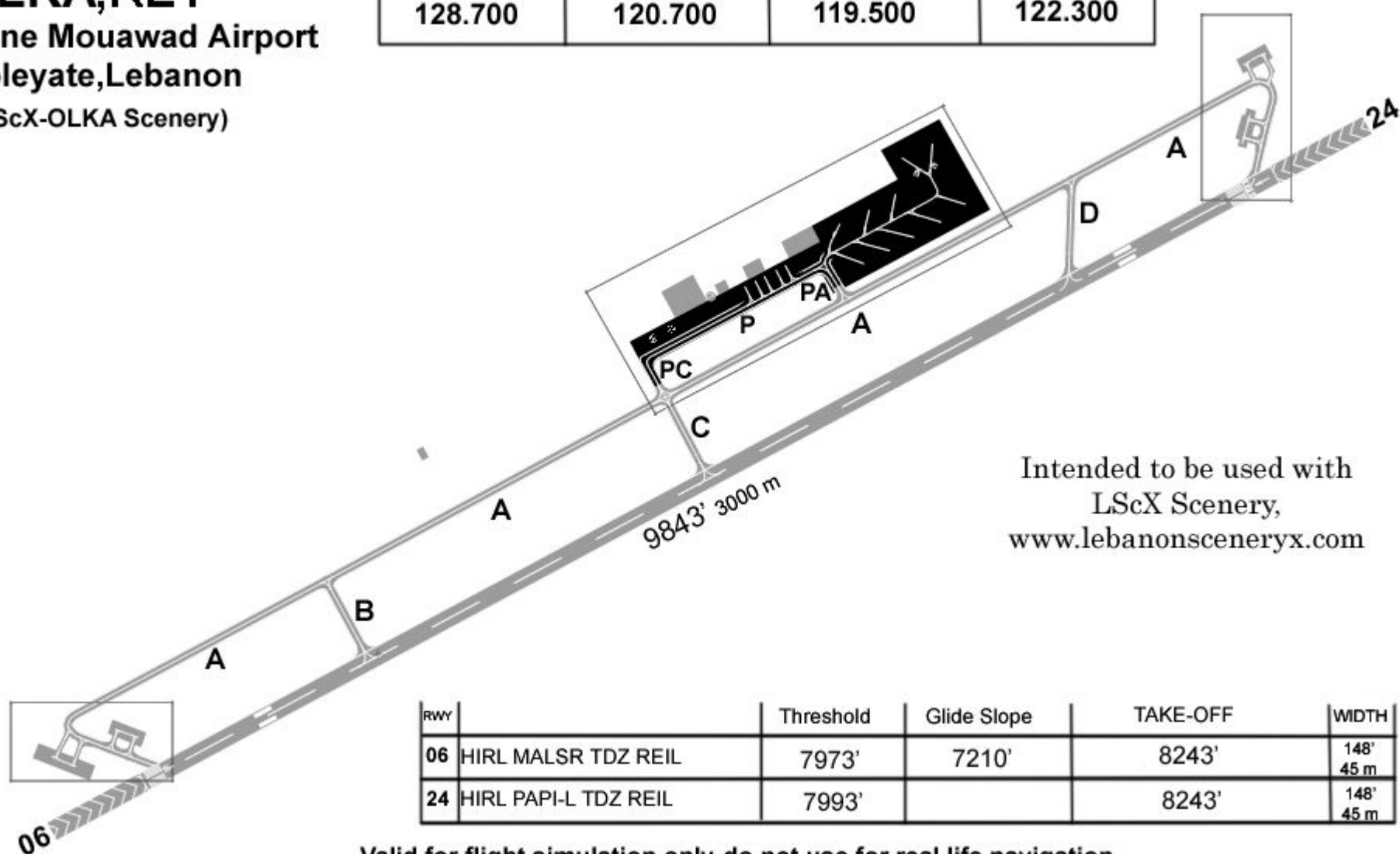
(LScX-OLKA Scenery)

ATIS  
128.700

GND  
120.700

TWR  
119.500

APP  
122.300



Intended to be used with  
LScX Scenery,  
[www.lebanonsceneryx.com](http://www.lebanonsceneryx.com)

RWY		Threshold	Glide Slope	TAKE-OFF	WIDTH
06	HIRL MALSR TDZ REIL	7973'	7210'	8243'	148' 45 m
24	HIRL PAPI-L TDZ REIL	7993'		8243'	148' 45 m

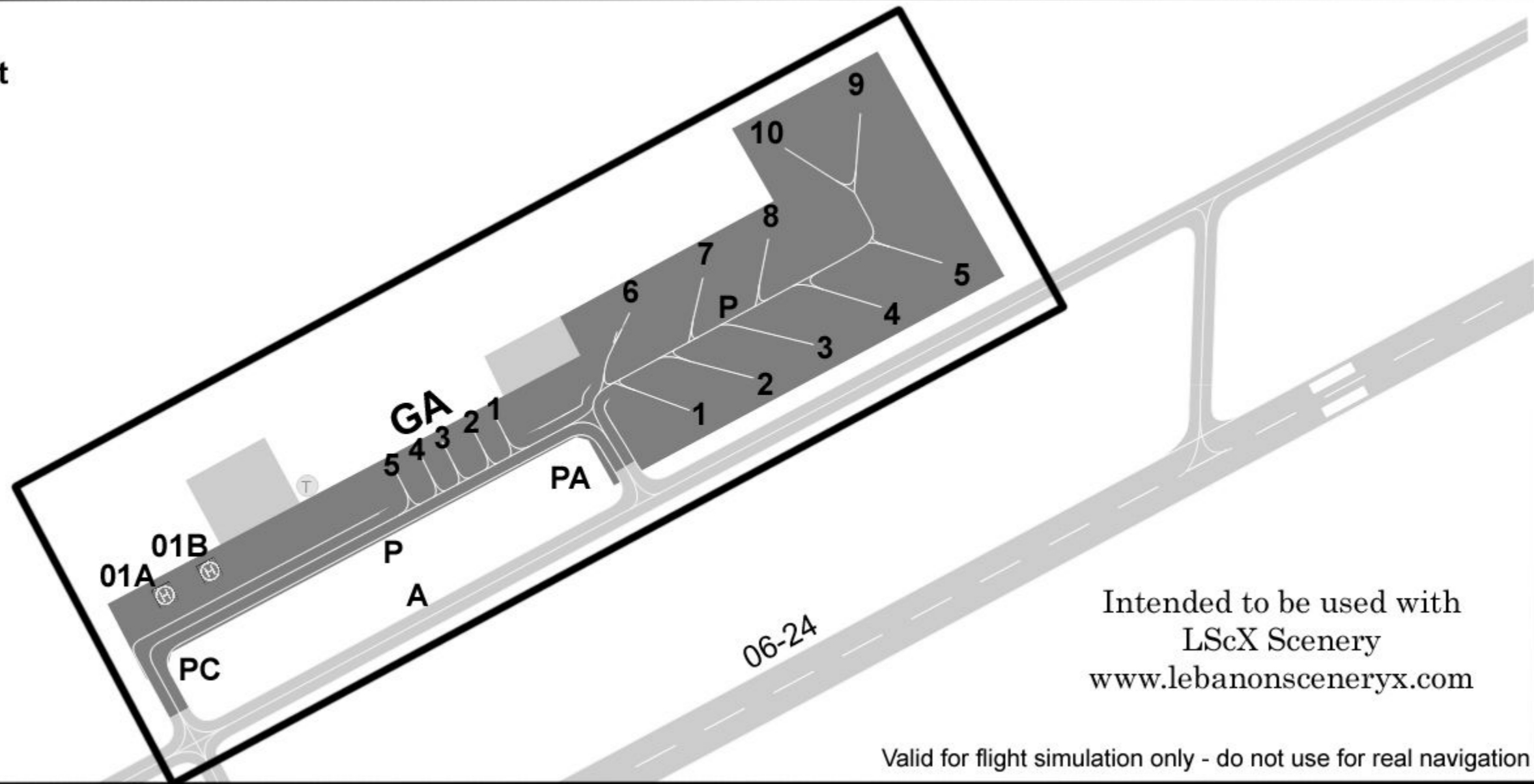
Valid for flight simulation only-do not use for real life navigation

**OLKA,KEY**

Rene Mouawad Airport

Koleyate,Lebanon

(LScX-OLKA Scenery)



Intended to be used with  
LScX Scenery  
[www.lebanonsceneryx.com](http://www.lebanonsceneryx.com)

Valid for flight simulation only - do not use for real navigation

**OLKA,KEY**  
**Rene Mouawad Airport**  
**Koleyate,Lebanon**  
**(LScX-OLKA)**

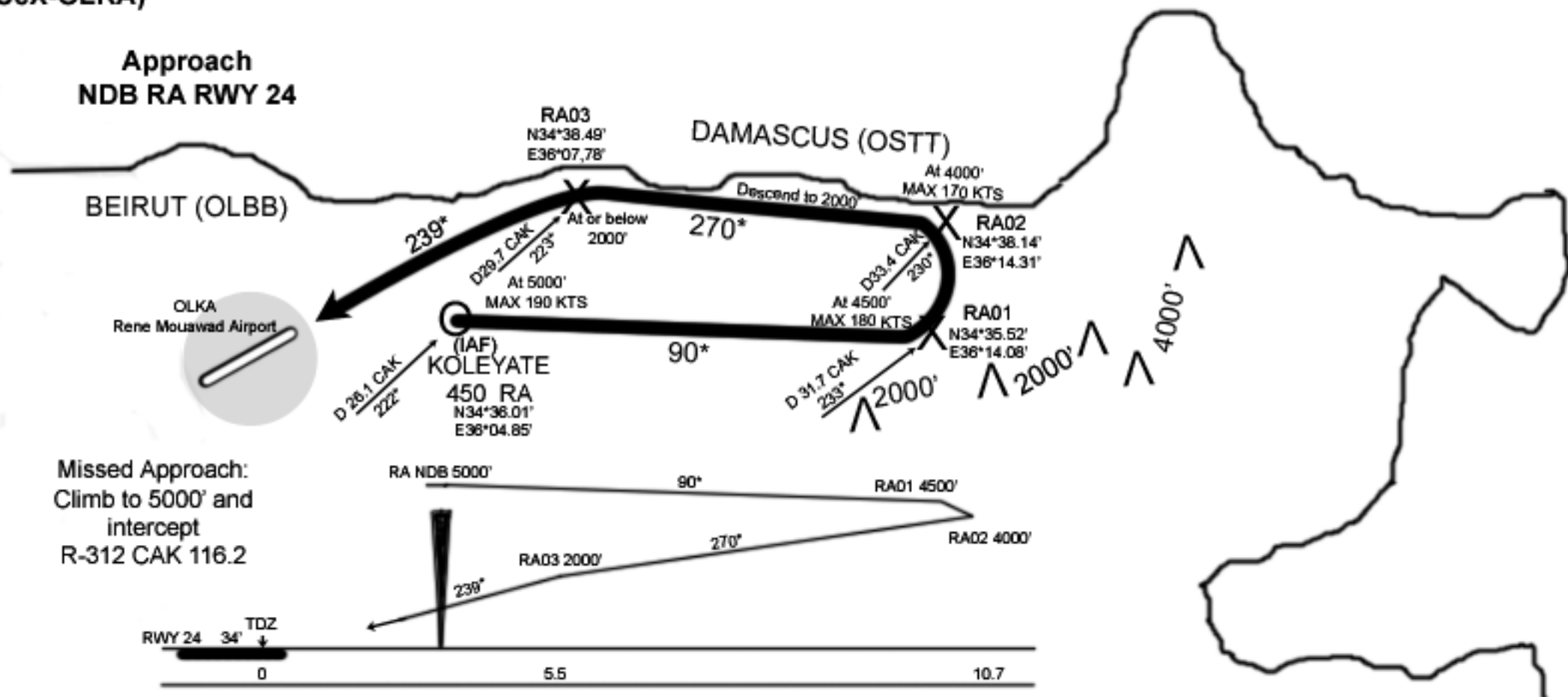
Trans. alt 13000'  
 or by ATC

ATIS 128.700

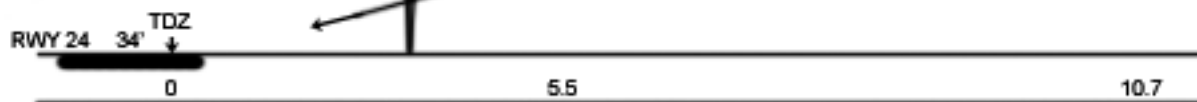
App. 122.300  
 TWR 119.500

Intended to be used with  
 LScX Scenery  
[www.lebanonsceneryx.com](http://www.lebanonsceneryx.com)

**Approach**  
**NDB RA RWY 24**



Missed Approach:  
 Climb to 5000' and  
 intercept  
 R-312 CAK 116.2



# OLKA / KEY

Rene Mouawad Airport  
Koleyate, Lebanon  
(LScX-OLKA)

Trans. alt 13000'  
or by ATC

ATIS 128.700

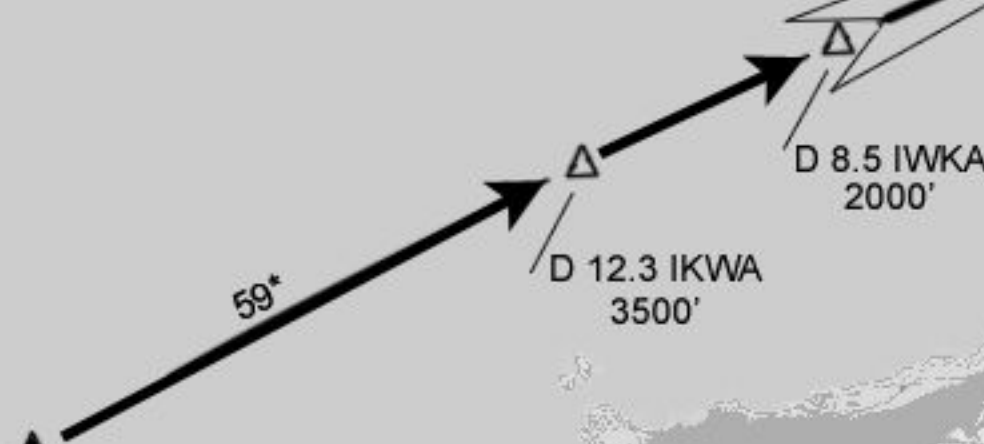
APP 122.300  
TWR 119.500

OLKA

KLEYATE  
450 RA

ILS DME  
059\* 109.10 IWKA

## ILS RWY 06



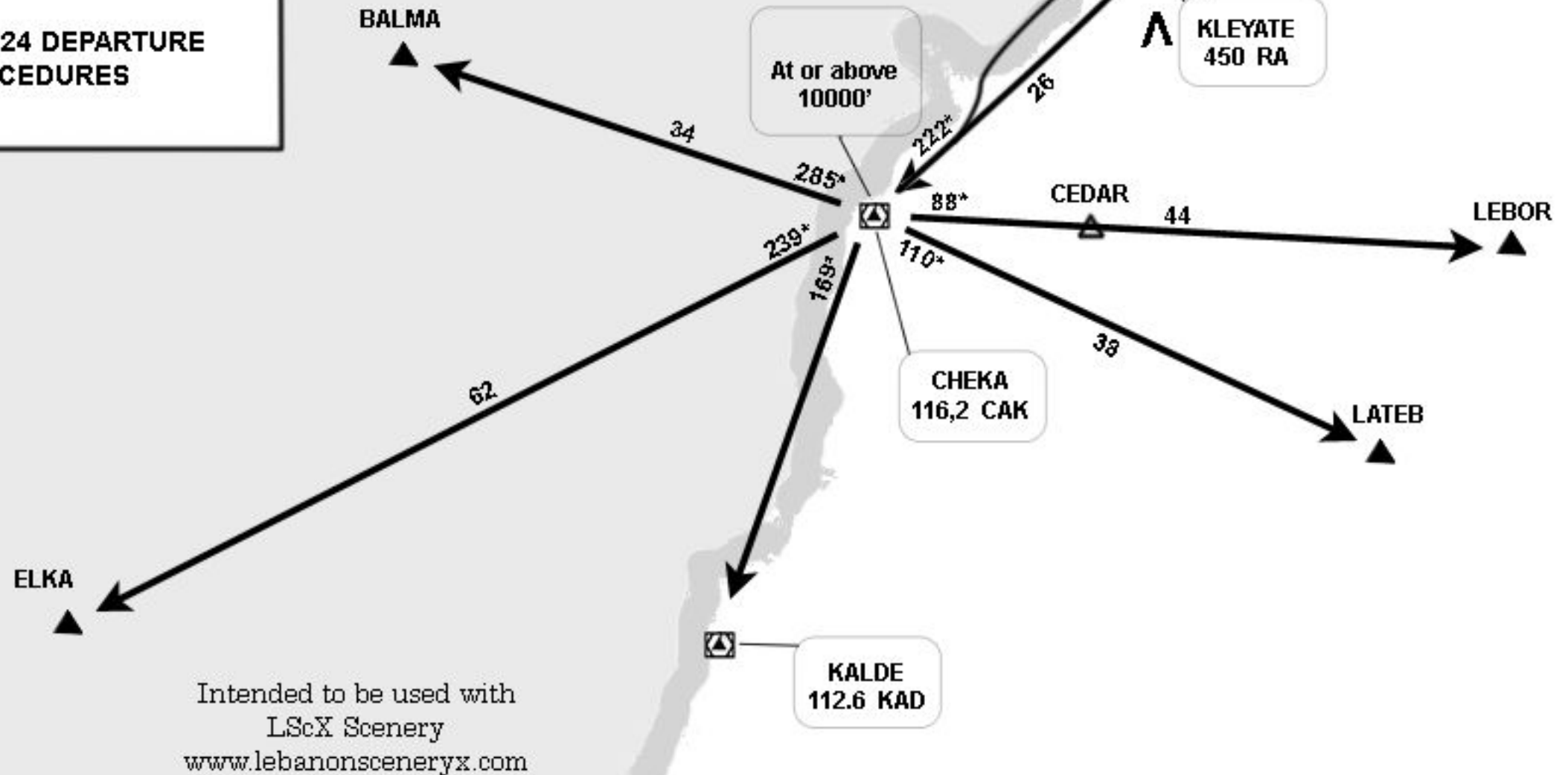
(IAF)  
**FAYHA**  
D 19 IWKA  
At or below  
5000'

CHEKA  
116.2 CAK

Intended to be used with  
LScX Scenery  
[www.lebanonsceneryx.com](http://www.lebanonsceneryx.com)

**OLKA ,KEY**  
**Rene Mouawad Airport**  
**Koleyate,Lebanon**  
**(LScX-OLKA)**

RWYS 06,24 DEPARTURE  
 PROCEDURES





**OLKA,KEY**

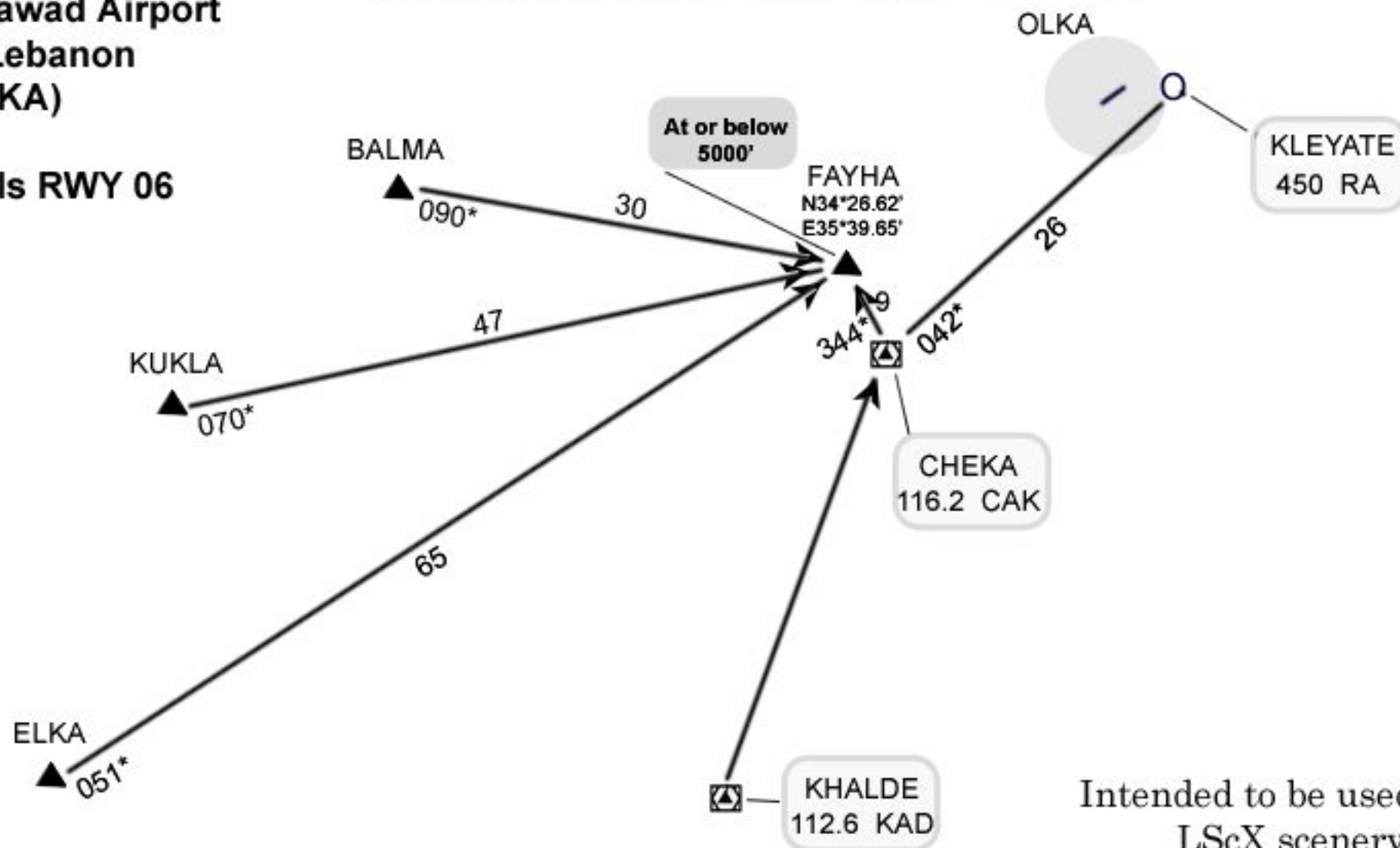
Rene Mouawad Airport  
Koleyate, Lebanon  
(LScX-OLKA)

Trans. alt 13000'  
or by ATC

ATIS 128.700

App 122.300  
TWR 119.500

## Arrivals RWY 06

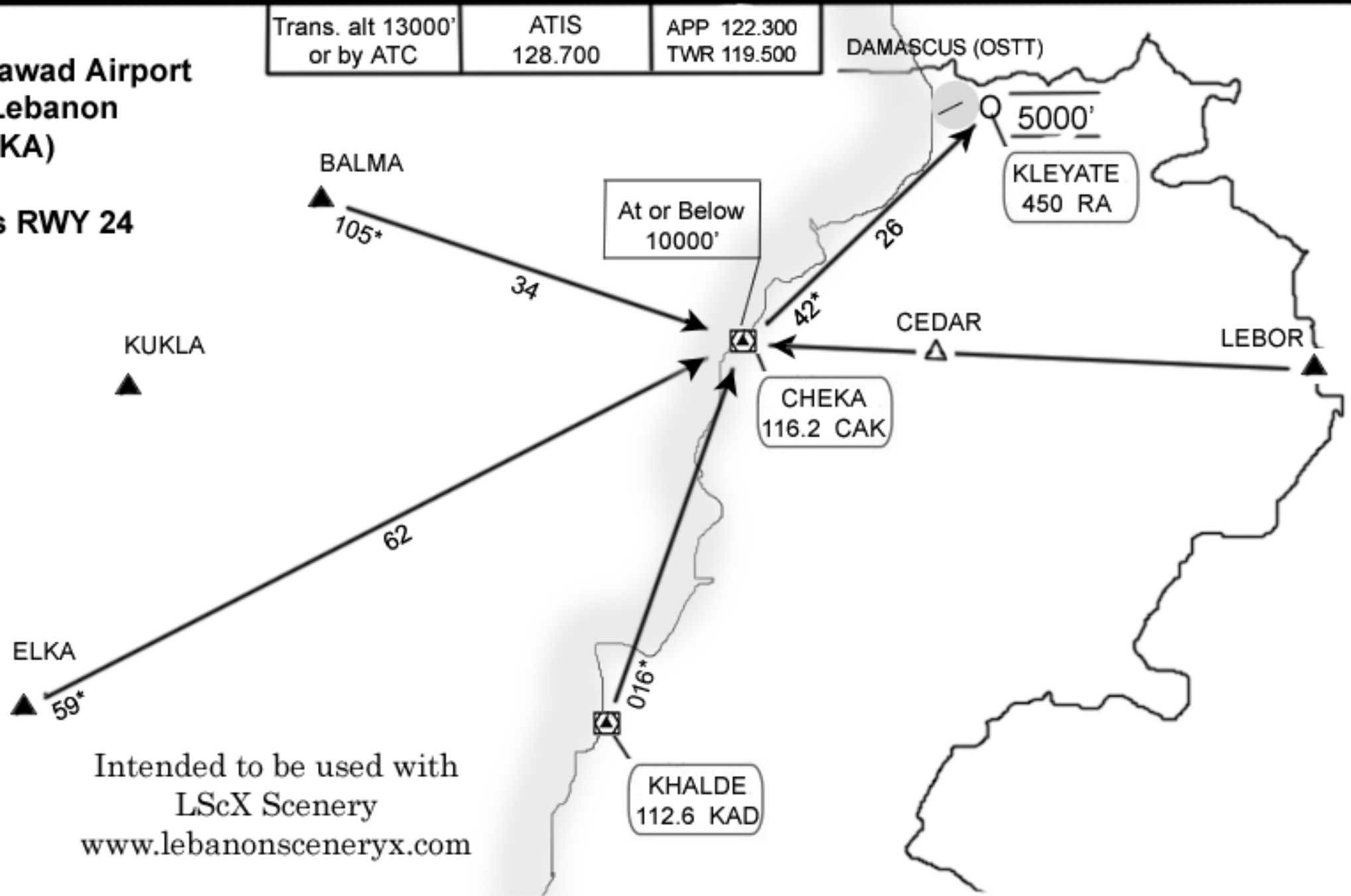


Intended to be used with  
LScX scenery  
[www.lebanonsceneryx.com](http://www.lebanonsceneryx.com)

**OLKA**  
 Rene Mouawad Airport  
 Koleyate, Lebanon  
 (LScX-OLKA)

Trans. alt 13000' or by ATC	ATIS 128.700	APP 122.300 TWR 119.500
--------------------------------	-----------------	----------------------------

**Arrivals RWY 24**



Intended to be used with  
 LScX Scenery  
[www.lebanonsceneryx.com](http://www.lebanonsceneryx.com)

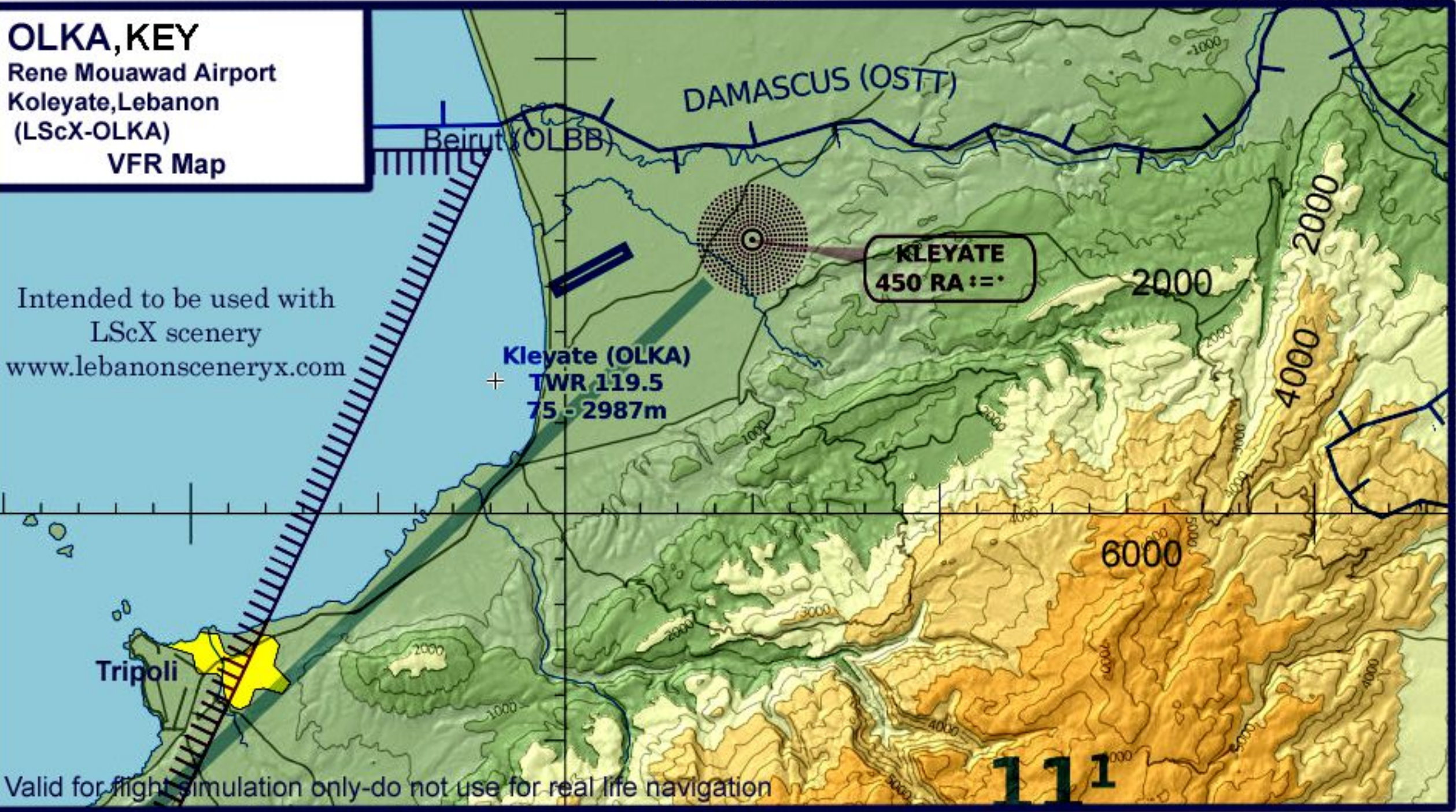


# OLKA, KEY

Rene Mouawad Airport  
Koleyate, Lebanon  
(LScX-OLKA)

VFR Map

Intended to be used with  
LScX scenery  
[www.lebanonsceneryx.com](http://www.lebanonsceneryx.com)



Valid for flight simulation only-do not use for real life navigation