

OJAM/ADJ
MARKA INTL

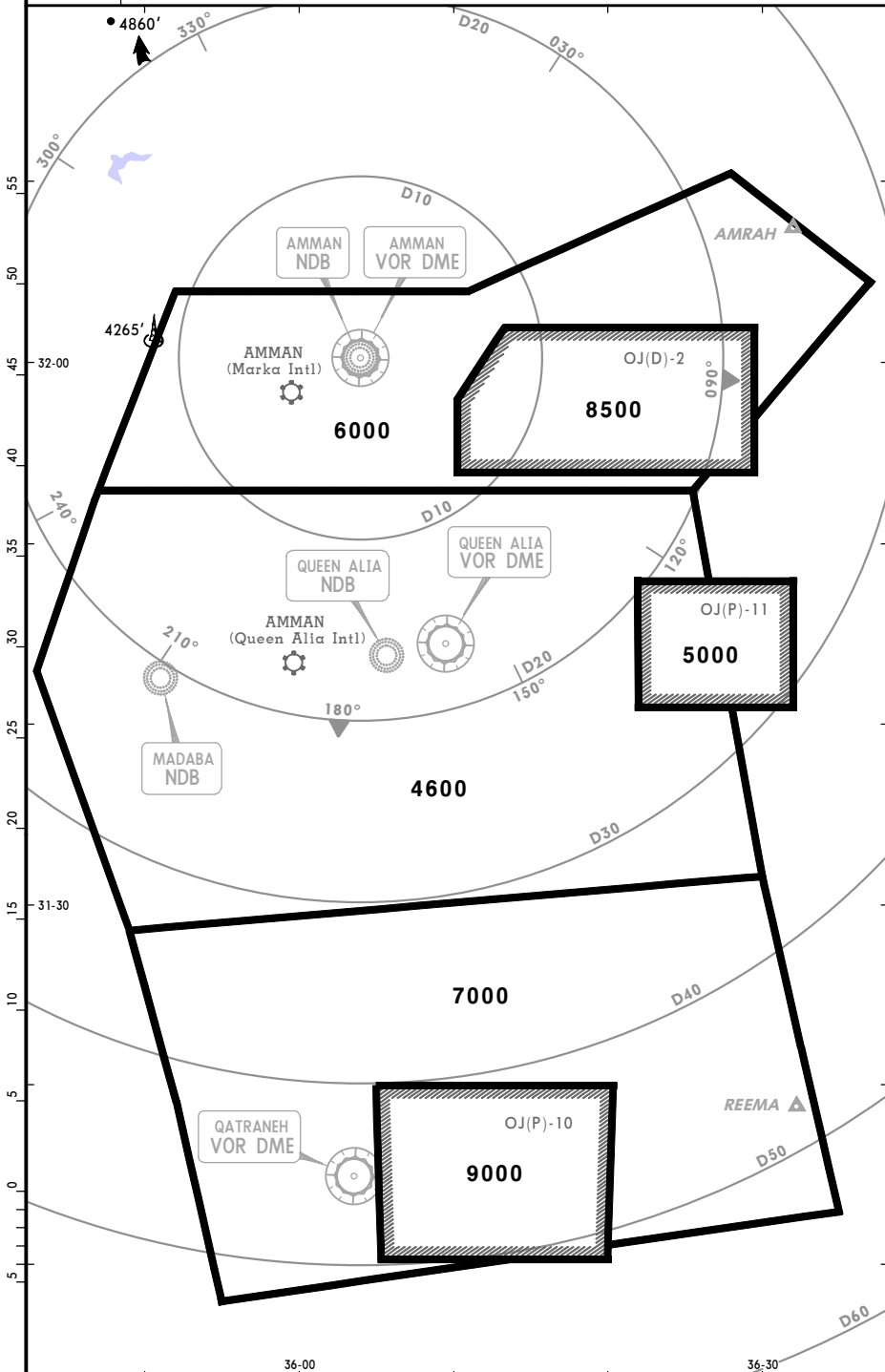
JEPPesen
16 JUN 06 **(10-1R)**

AMMAN, JORDAN
RADAR MINIMUM ALTITUDES

Apt Elev
2555'

Alt Set: MB Trans level: FL150 Trans alt: 13000'
Within AMMAN TMA traffic could operate at 7000' around and outside OJ(P)-10.

FOR FLIGHT SIMULATION USE ONLY!



OJAM/ADJ
MARKA INTL

JEPPESEN

AMMAN, JORDAN

6 DEC 13

10-2

Eff 12 Dec

STAR

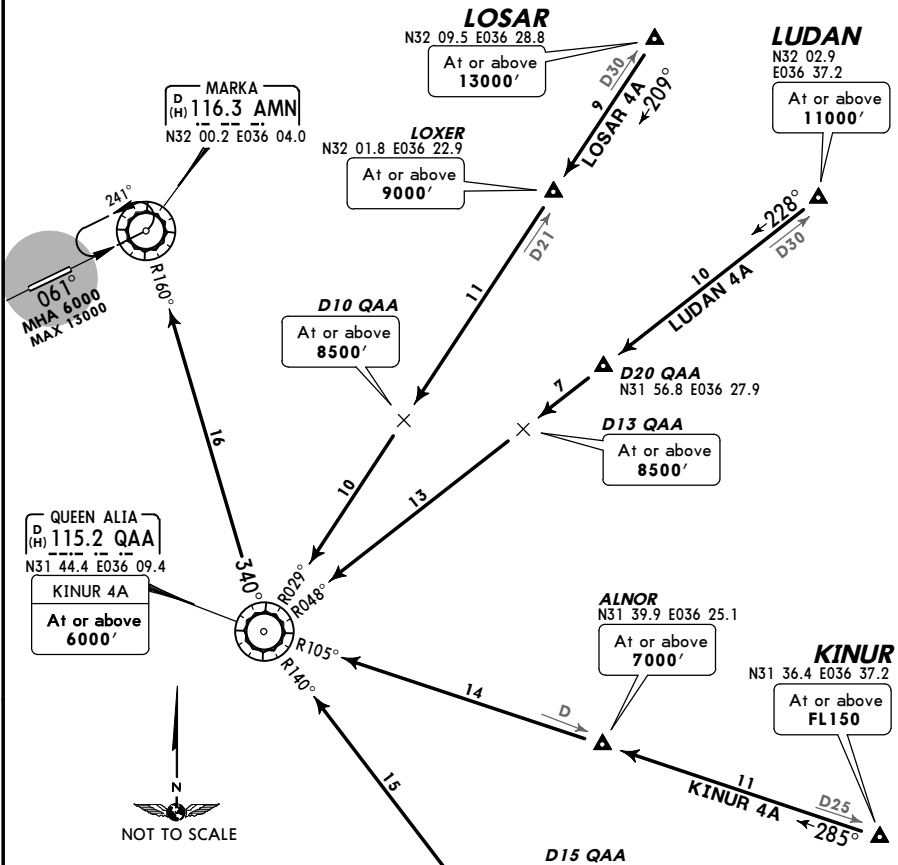
Apt Elev
2555'

Alt Set: hPa Trans level: FL150 Trans alt: 13000'
1. Follow ATC descent clearance instructions but do not descend below minimum safety profiles.
2. Traffic will be initially cleared to QAA to await onward clearance.

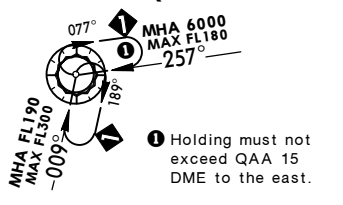
5400'

MSA
ARP

**KINUR 4A [KINU4A], KULDI 4A [KULD4A]
LOSAR 4A [LOSA4A], LUDAN 4A [LUDA4A]
RWY 24 ARRIVALS**



HOLDINGS OVER QAA

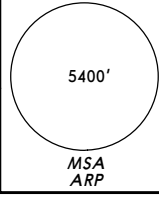


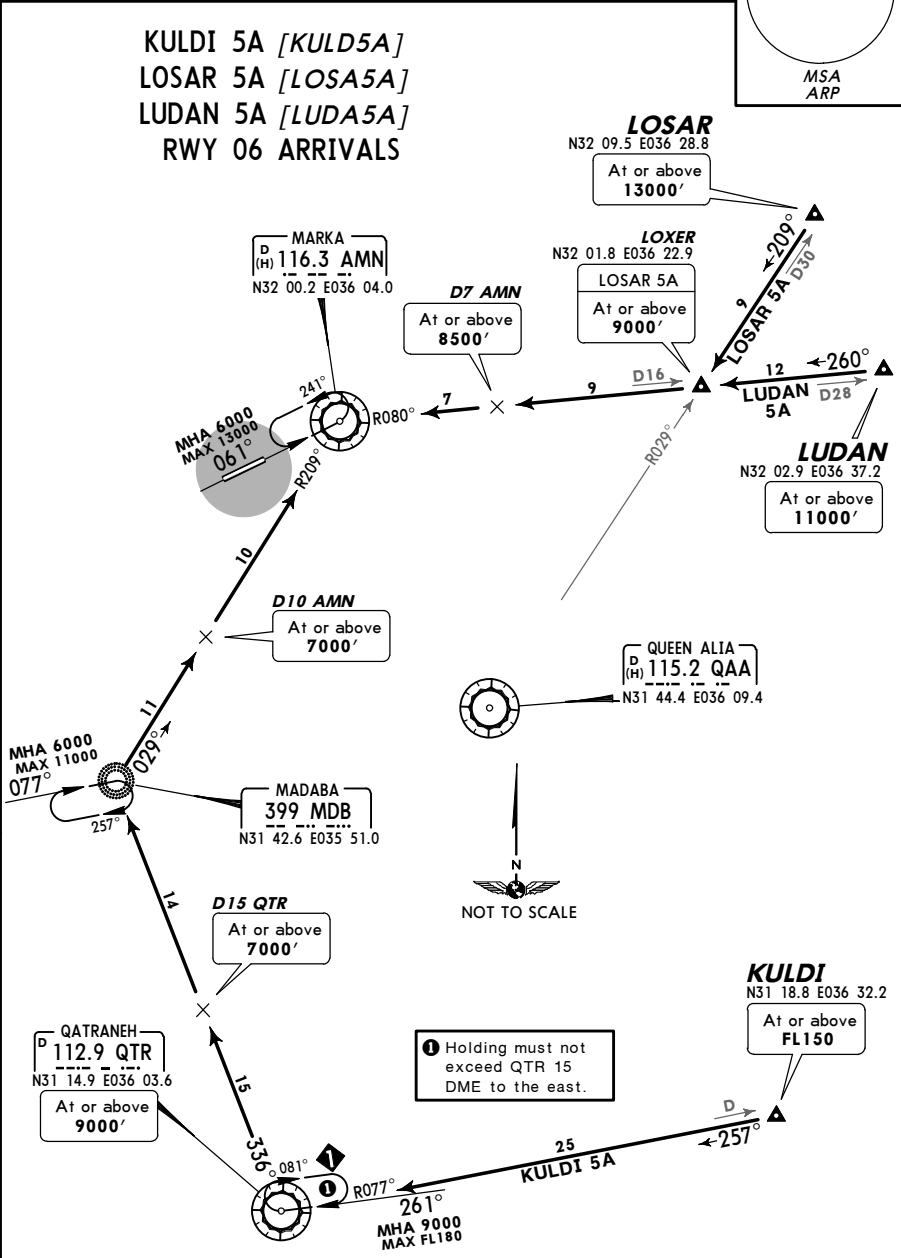
STAR	ROUTING
KINUR 4A	At KINUR intercept QAA R-105 inbound to QAA, AMN R-160 inbound to AMN.
KULDI 4A	At KULDI intercept QAA R-140 inbound to QAA, AMN R-160 inbound to AMN.
LOSAR 4A	At LOSAR intercept QAA R-029 inbound to QAA, AMN R-160 inbound to AMN.
LUDAN 4A	At LUDAN intercept QAA R-048 inbound to QAA, AMN R-160 inbound to AMN.

CHANGES: STAR ELOXI 4A replaced by KINUR 4A; MSA.

FOR FLIGHT SIMULATION USE ONLY!

FOR FLIGHT SIMULATION USE ONLY!

<p><i>Apt Elev</i> 2555'</p>	<p>Alt Set: hPa Trans level: FL150 Trans alt: 13000'</p> <p>1. Follow ATC descent clearance instructions but do not descend below minimum safety profiles.</p> <p>2. Initial holding clearance may be issued for QTR or AMN.</p>	
---	--	--



STAR	ROUTING
KULDI 5A	At KULDI intercept QTR R-077 inbound to QTR, turn RIGHT, QTR R-336 to MDB, intercept AMN R-209 inbound to AMN.
LOSAR 5A	At LOSAR intercept QAA R-029 inbound to LOXER, intercept AMN R-080 inbound to AMN.
LUDAN 5A	At LUDAN intercept AMN R-080 inbound to AMN.

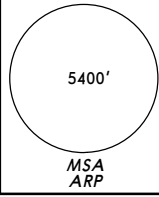
OJAM/ADJ
MARKA INTL

JEPPESEN
6 DEC 13 (10-2B) Eff 12 Dec

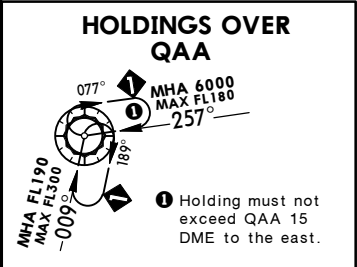
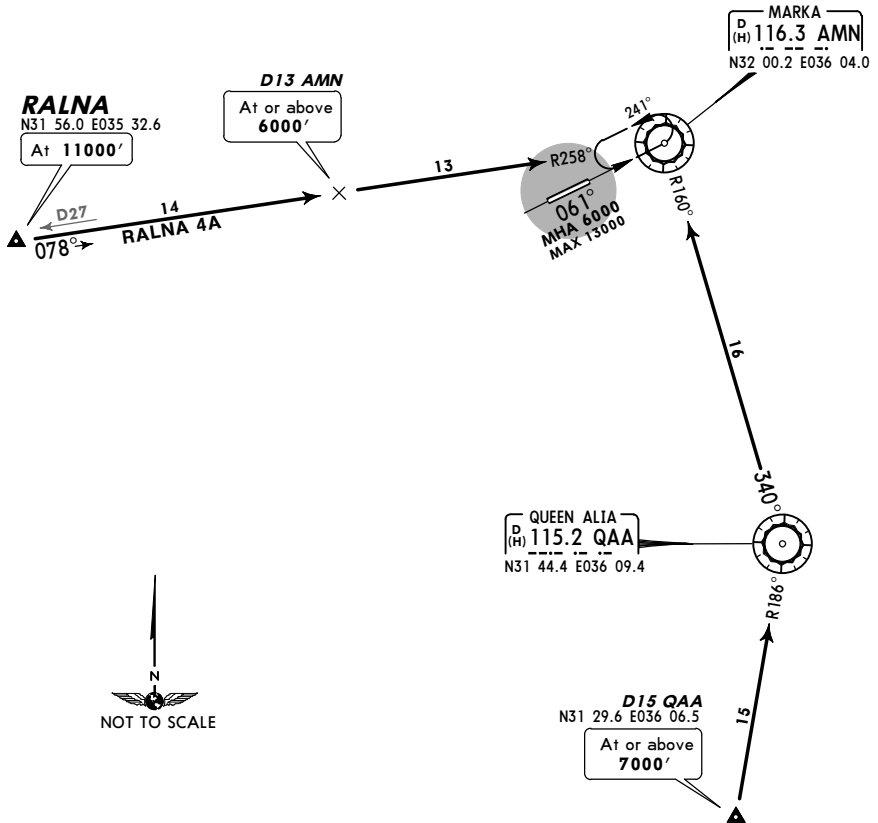
AMMAN, JORDAN
STAR

Apt Elev
2555'

Alt Set: hPa Trans level: FL150 Trans alt: 13000'
1. Follow ATC descent clearance instructions but do not descend below minimum safety profiles.
2. Traffic will be initially cleared to QAA to await onward clearance.



QTR 4A, RALNA 4A [RALNA4]
RWY 24 ARRIVALS



② Holding must not exceed QTR 15 DME to the east.

① Holding must not exceed QAA 15 DME to the east.

STAR	ROUTING
QTR 4A	Intercept QAA R-186 inbound to QAA, AMN R-160 inbound to AMN.
RALNA 4A	At RALNA intercept AMN R-258 inbound to AMN.

CHANGES: STAR SALAM 4A replaced by RALNA 4A; MSA.

© JEPPESEN, 2011, 2013. ALL RIGHTS RESERVED.

FOR FLIGHT SIMULATION USE ONLY!

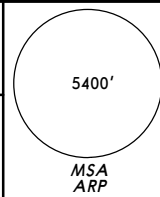
OJAM/ADJ
MARKA INTL

JEPPESEN
6 DEC 13 **(10-2C)** Eff 12 Dec

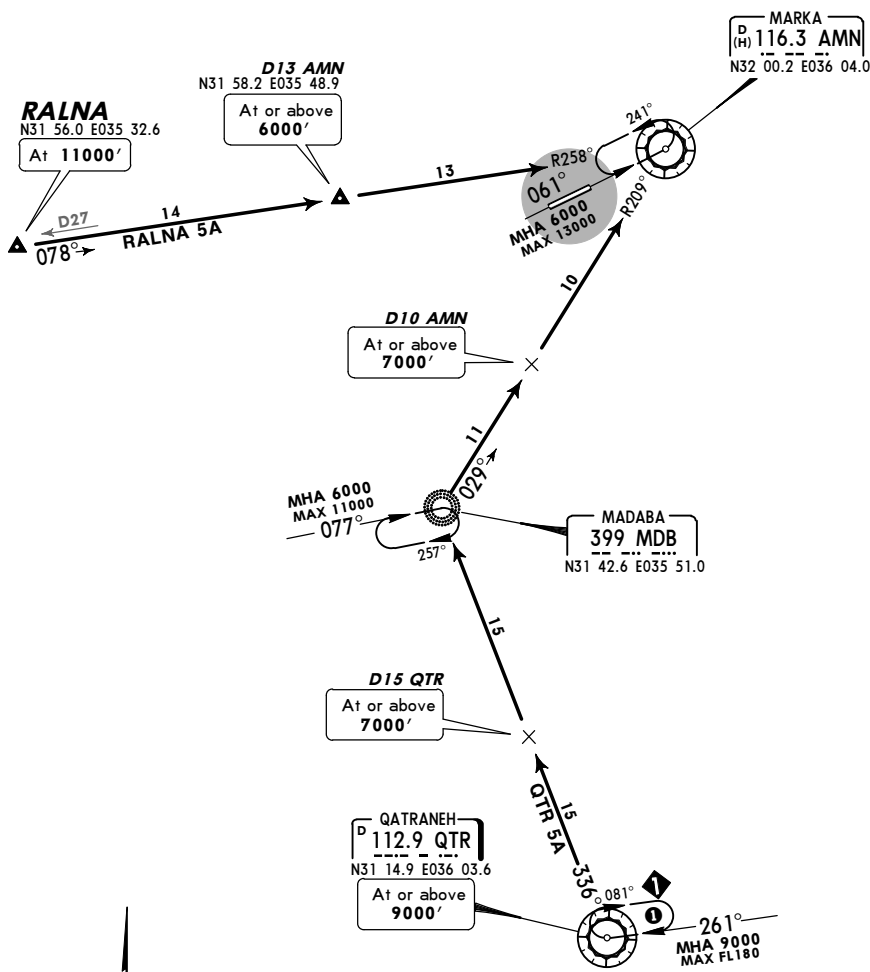
AMMAN, JORDAN
STAR

Apt Elev
2555'

Alt Set: hPa Trans level: FL150 Trans alt: 13000'
1. Follow ATC descent clearance instructions but do not descend below minimum safety profiles.
2. Initial holding clearance may be issued for QTR or AMN.



QTR 5A, RALNA 5A [RALN5A]
RWY 06 ARRIVALS



1 Holding must not exceed QTR 15 DME to the east.

STAR	ROUTING
QTR 5A	Intercept QTR R-336 to MDB, intercept AMN R-209 inbound to AMN.
RALNA 5A	At RALNA intercept AMN R-258 inbound to AMN.

FOR FLIGHT SIMULATION USE ONLY!

OJAM/ADJ
MARKA INTL

JEPPESSEN

6 DEC 13

10-2D

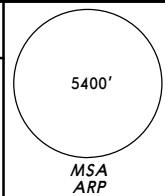
Eff 12 Dec

AMMAN, JORDAN

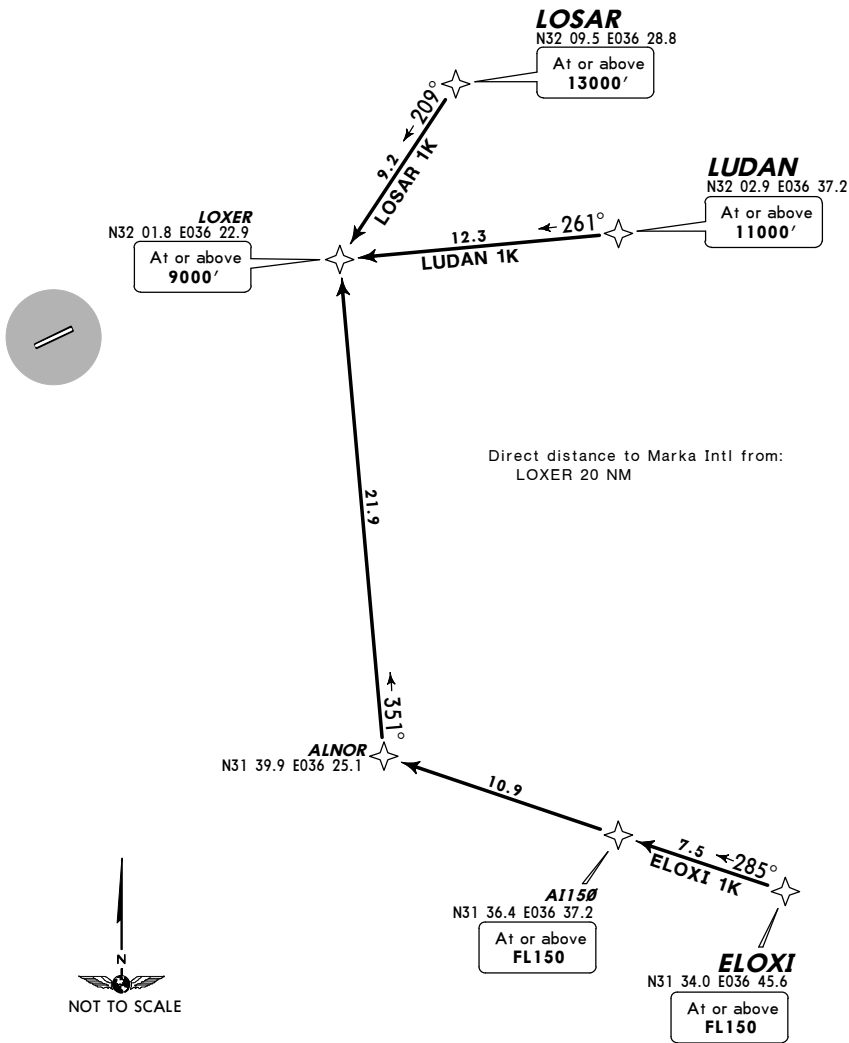
RNAV STAR

Apt Elev
2555'

Alt Set: hPa Trans level: FL150 Trans alt: 13000'



ELOXI 1K [ELOX1K]
LOSAR 1K [LOSA1K]
LUDAN 1K [LUDA1K]
RWY 24 RNAV ARRIVALS
RNAV 1 (GNSS)
DME/DME NOT AUTHORIZED



STAR	ROUTING
ELOXI 1K	On 285° track via AI150 to ALNOR, turn RIGHT, 351° track to LOXER.
LOSAR 1K	On 209° track to LOXER.
LUDAN 1K	On 261° track to LOXER.

CHANGES: New procedures at this airport.

© JEPPESSEN, 2013. ALL RIGHTS RESERVED.

FOR FLIGHT SIMULATION USE ONLY!

OJAM/ADJ
MARKA INTL

JEPPESSEN

6 DEC 13

10-2E

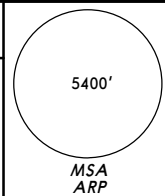
Eff 12 Dec

AMMAN, JORDAN

RNAV STAR

Apt Elev
 2555'

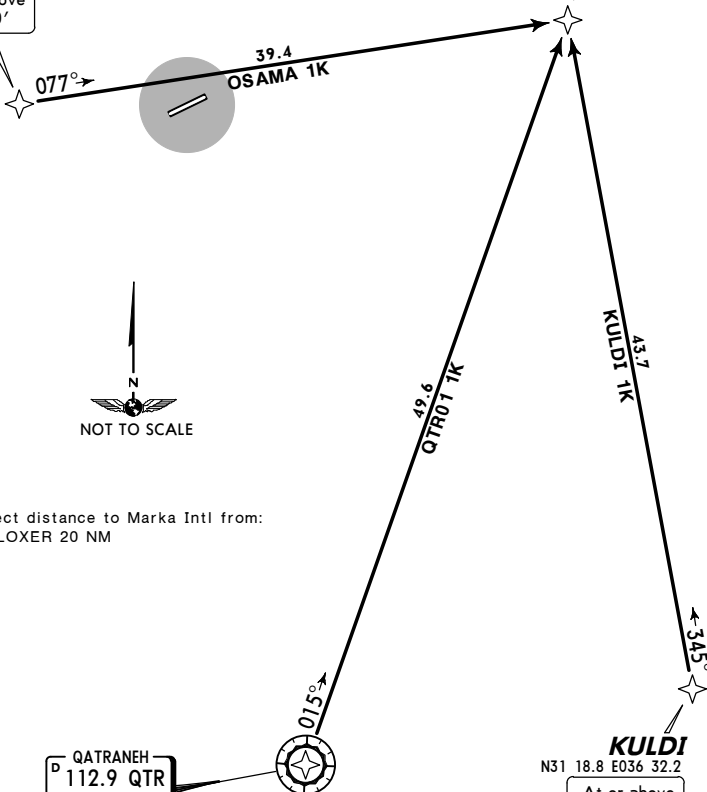
Alt Set: hPa Trans level: FL150 Trans alt: 13000'



KULDI 1K [KULD1K]
OSAMA 1K [OSAM1K]
QTR01 1K [QTRØ1K]
RWY 24 RNAV ARRIVALS
 RNAV 1 (GNSS)
 DME/DME NOT AUTHORIZED

OSAMA
 N31 55.8 E035 37.1
 At or above
 11000'

LOXER
 N32 01.8 E036 22.9
 At or above
 9000'



Direct distance to Marka Intl from:
 LOXER 20 NM

QATRANEH
 D 112.9 QTR
 N31 14.9 E036 03.6
QTRØ1
 At or above
 9000'

STAR	ROUTING
KULDI 1K	On 345° track to LOXER.
OSAMA 1K	On 077° track to LOXER.
QTR01 1K	On 015° track to LOXER.

CHANGES: New procedures at this airport.

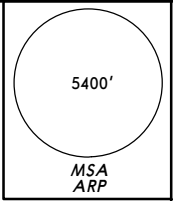
© JEPPESSEN, 2013. ALL RIGHTS RESERVED.

FOR FLIGHT SIMULATION USE ONLY!

OJAM/ADJ
MARKA INTL

JEPPESSEN
 6 DEC 13 **(10-2F)** **EFT 12 Dec**

AMMAN, JORDAN
RNAV STAR



Api Elev
2555'

Alt Set: hPa Trans level: FL150 Trans alt: 13000'

ELOXI 1L [ELOXI1L]
LOSAR 1L [LOSA1L]
LUDAN 1L [LUDA1L]
RWY 06 RNAV ARRIVALS
 RNAV 1 (GNSS)
 DME/DME NOT AUTHORIZED

ELOXI
 N31 34.0 E036 45.6
 At or above
FL150

LUDAN
 N32 02.9 E036 37.2
 At or above
11000'

LOSAR
 N32 09.5 E036 28.8
 At or above
13000'

LOXER
 N32 01.8 E036 22.9
 At or above
9000'

Direct distances to
 Marka Intl from:
 EMILO 12 NM
 MUSAL 12 NM

A1150
 N31 36.4 E036 37.2
 At or above
FL150

ALNOR
 N31 39.9
 E036 25.1

EMILO
 N31 49.1 E035 50.5
 At or above
7000'
 MAX
210 KT



MUSAL
 N31 58.1 E035 45.4
 At or above
7000'
 MAX
210 KT

AM067
 N32 00.3 E035 50.7
 MAX
210 KT

AM066
 N32 00.2 E036 04.0
 At or above
9000'

HOLDING OVER MUSAL



STAR	ROUTING
ELOXI 1L	On 285° track via A1150 to ALNOR, turn LEFT, 283° track to EMILO.
LOSAR 1L	On 209° track to LOXER, turn RIGHT, 261° track to AM066, turn RIGHT, 266° track to AM067, turn LEFT, 240° track to MUSAL.
LUDAN 1L	On 261° track via LOXER to AM066, turn RIGHT, 266° track to AM067, turn LEFT, 240° track to MUSAL.

FOR FLIGHT SIMULATION USE

CHANGES: New procedures at this airport. © JEPPESSEN, 2013. ALL RIGHTS RESERVED.

OJAM/ADJ
MARKA INTL

JEPPESSEN

AMMAN, JORDAN

6 DEC 13

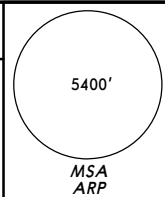
(10-2G)

Eff 12 Dec

RNAV STAR

Apt Elev
2555'

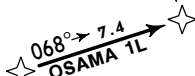
Alt Set: hPa Trans level: FL150 Trans alt: 13000'



KULDI 1L [KULD1L]
OSAMA 1L [OSAM1L]
QTR01 1L [QTRØ1L]
RWY 06 RNAV ARRIVALS
RNAV 1 (GNSS)
DME/DME NOT AUTHORIZED

MUSAL
N31 58.1 E035 45.4

At or above
7000'
MAX
210 KT



OSAMA
N31 55.8 E035 37.1

At or above
11000'

EMILO
N31 49.1 E035 50.5

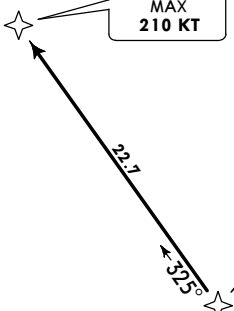
At or above
7000'
MAX
210 KT

Direct distances to
Marka Intl from:
EMILO 12 NM
MUSAL 12 NM



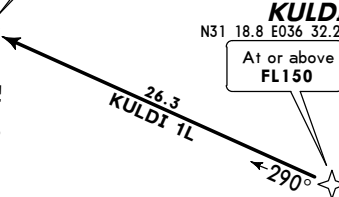
AI087
N31 29.6 E036 04.2

At or above
7000'



KULDI
N31 18.8 E036 32.2

At or above
FL 150



QATRANEH
D 112.9 QTR
N31 14.9 E036 03.6

QTRØ1

At or above
9000'



HOLDING OVER MUSAL



STAR	ROUTING
KULDI 1L	On 290° track to AI087, turn RIGHT, 325° track to EMILO.
OSAMA 1L	On 068° track to MUSAL, descend in holdng to initial approach altitude.
QTR01 1L	On 358° track to AI087, turn LEFT, 325° track to EMILO.

FOR FLIGHT SIMULATION USE ONLY!

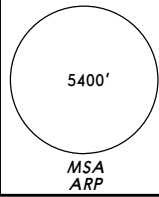
OJAM/ADJ
MARKA INTL

JEPPesen
6 DEC 13 (10-3) Eff 12 Dec

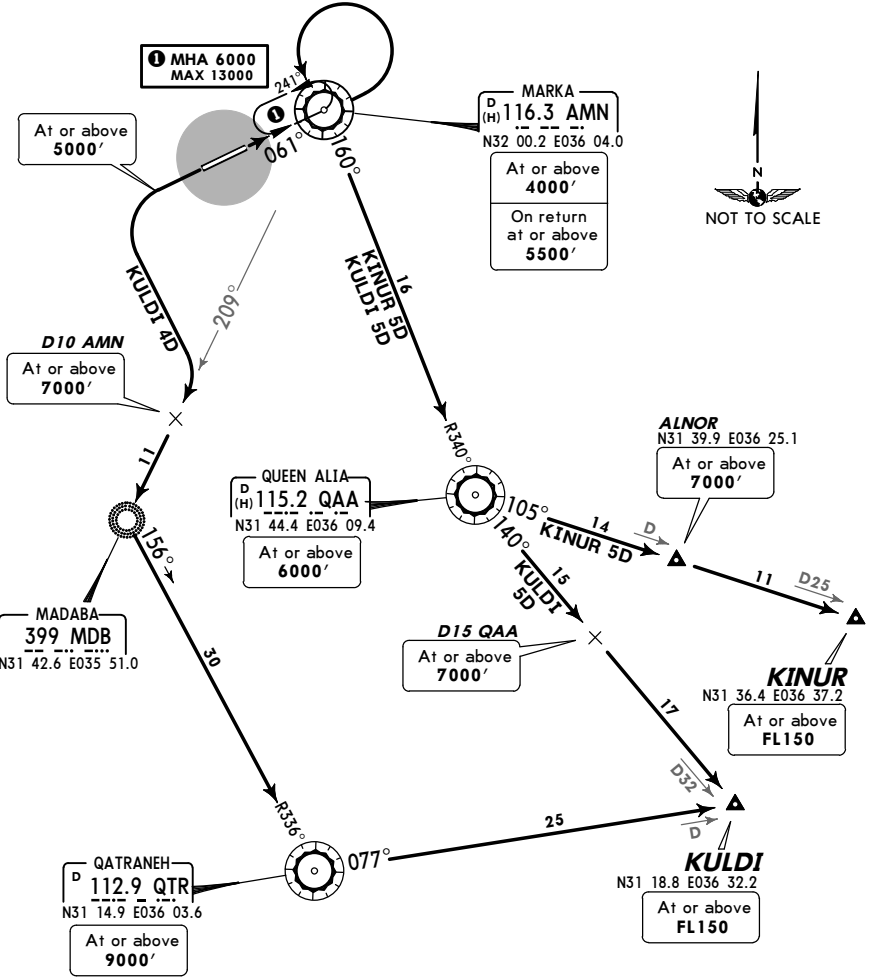
AMMAN, JORDAN
SID

Apt Elev
2555'

- Trans level: FL150 Trans alt: 13000'
1. Aircraft unable to achieve SID profile restrictions must request non-standard departure clearance on start-up.
 2. If unable to comply with SID profile restrictions after take-off carry out following contingency: turn LEFT or RIGHT, as appropriate, at 5000' to enter AMN holding pattern. Advise ATC immediately the contingency is commenced.



KINUR 5D [KINU5D]
KULDI 4D [KULD4D], KULDI 5D [KULD5D]
RWYS 06, 24 DEPARTURES



SID	RWY	ROUTING
KINUR 5D	06	Climb to AMN, turn LEFT to recross AMN, QAA R-340 inbound to QAA, turn LEFT, QAA R-105 via ALNOR to KINUR.
KULDI 4D	24	Climb on runway heading to 5000', turn LEFT, intercept AMN R-209 to MDB, QTR R-336 inbound to QTR, turn LEFT, QTR R-077 to KULDI.
KULDI 5D	06	Climb to AMN, turn LEFT to recross AMN, QAA R-340 inbound to QAA, turn LEFT, QAA R-140 to KULDI.

CHANGES: SID KINUR 5D established; MSA.

FOR FLIGHT SIMULATION USE ONLY!

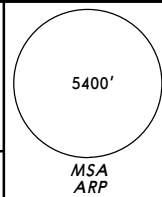
OJAM/ADJ
MARKA INTL

JEPPESEN
6 DEC 13 **(10-3A)** Eff 12 Dec

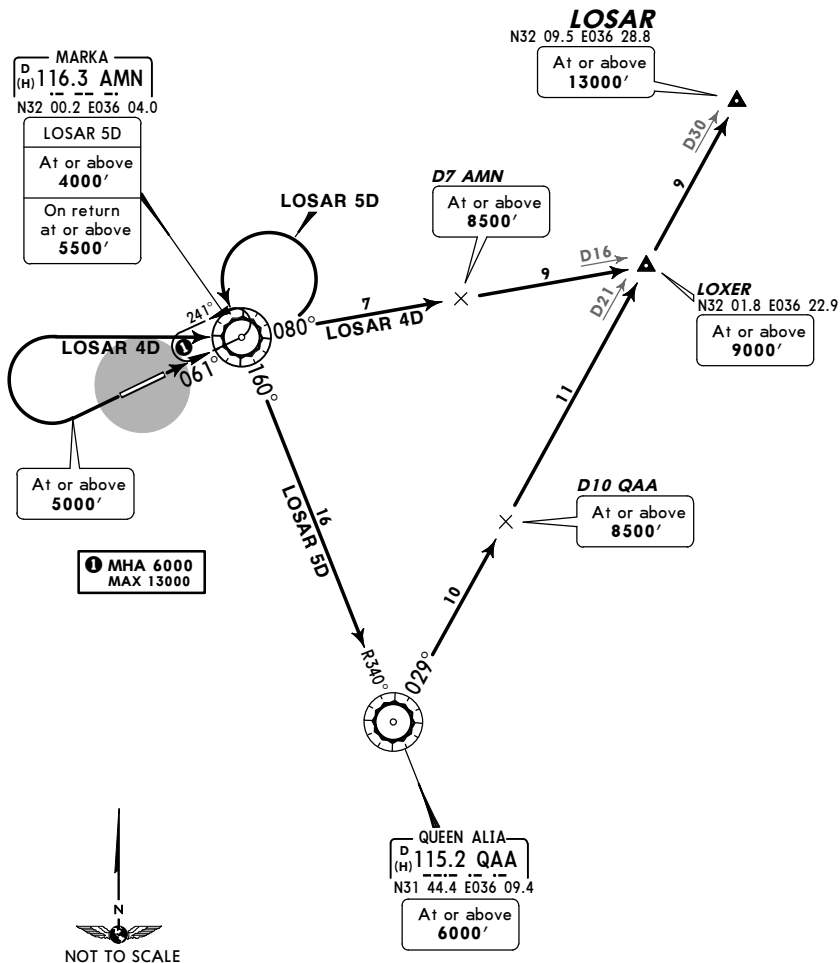
AMMAN, JORDAN
SID

Apt Elev
2555'

- Trans level: FL150 Trans alt: 13000'
1. Aircraft unable to achieve SID profile restrictions must request non-standard departure clearance on start-up.
 2. If unable to comply with SID profile restrictions after take-off carry out following contingency: turn LEFT or RIGHT, as appropriate, at 5000' to enter AMN holding pattern. Advise ATC immediately the contingency is commenced.



LOSAR 4D [LOSA4D]
LOSAR 5D [LOSA5D]
RWYS 24, 06 DEPARTURES



SID	RWY	ROUTING
LOSAR 4D	24	Climb on runway heading to 5000', turn RIGHT to AMN, AMN R-080 to LOXER, turn LEFT, intercept QAA R-029 to LOSAR.
LOSAR 5D	06	Climb to AMN, turn LEFT to recross AMN, QAA R-340 inbound to QAA, turn LEFT, QAA R-029 via LOXER to LOSAR.

CHANGES: SIDs revised; MSA.

FOR FLIGHT SIMULATION USE ONLY!

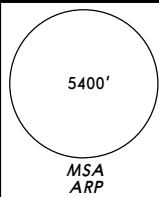
OJAM/ADJ
MARKA INTL

JEPPESEN
6 DEC 13 **(10-3B)** **Eff 12 Dec**

AMMAN, JORDAN
SID

Apt Elev
2555'

- Trans level: FL150 Trans alt: 13000'
1. Aircraft unable to achieve SID profile restrictions must request non-standard departure clearance on start-up.
 2. If unable to comply with SID profile restrictions after take-off carry out following contingency: turn LEFT or RIGHT, as appropriate, at 5000' to enter AMN holding pattern. Advise ATC immediately the contingency is commenced.



LUDAN 4D [LUDA4D]
LUDAN 5D [LUDA5D]
RWYS 24, 06 DEPARTURES

MARKA
D 116.3 AMN
(H)
N32 00.2 E036 04.0

LUDAN 5D

At or above
4000'

On return
at or above
5500'

LUDAN
N32 02.9 E036 37.2

At or above
11000'

D7 AMN

At or above
8500'

LOXER
N32 01.8
E036 22.9

LUDAN 4D

At or above
5000'

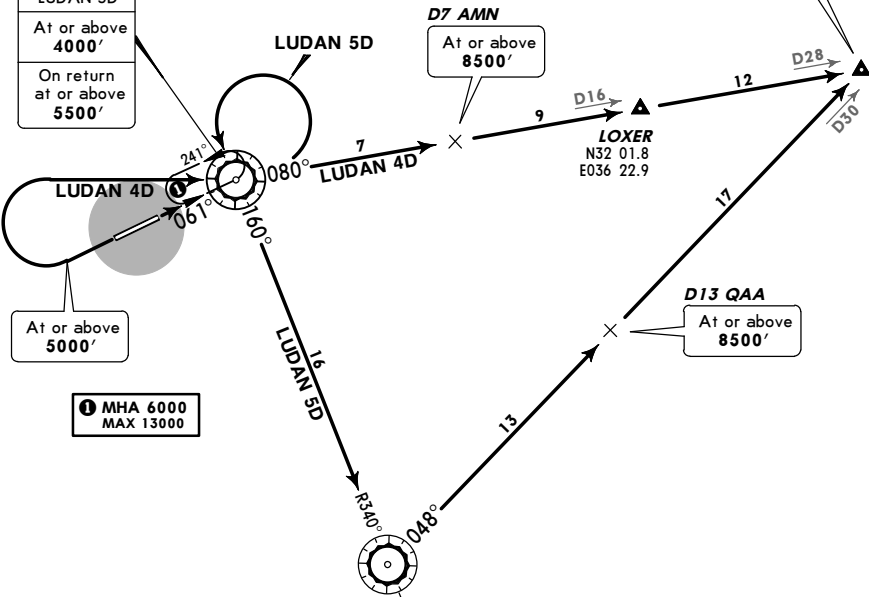
MHA 6000
MAX 13000

D13 QAA

At or above
8500'

QUEEN ALIA
D 115.2 QAA
(H)
N31 44.4 E036 09.4

At or above
6000'



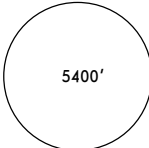
SID	RWY	ROUTING
LUDAN 4D	24	Climb on runway heading to 5000', turn RIGHT to AMN, AMN R-080 via LOXER to LUDAN.
LUDAN 5D	06	Climb to AMN, turn LEFT to recross AMN, QAA R-340 inbound to QAA, turn LEFT, QAA R-048 to LUDAN.

FOR FLIGHT SIMULATION USE ONLY!

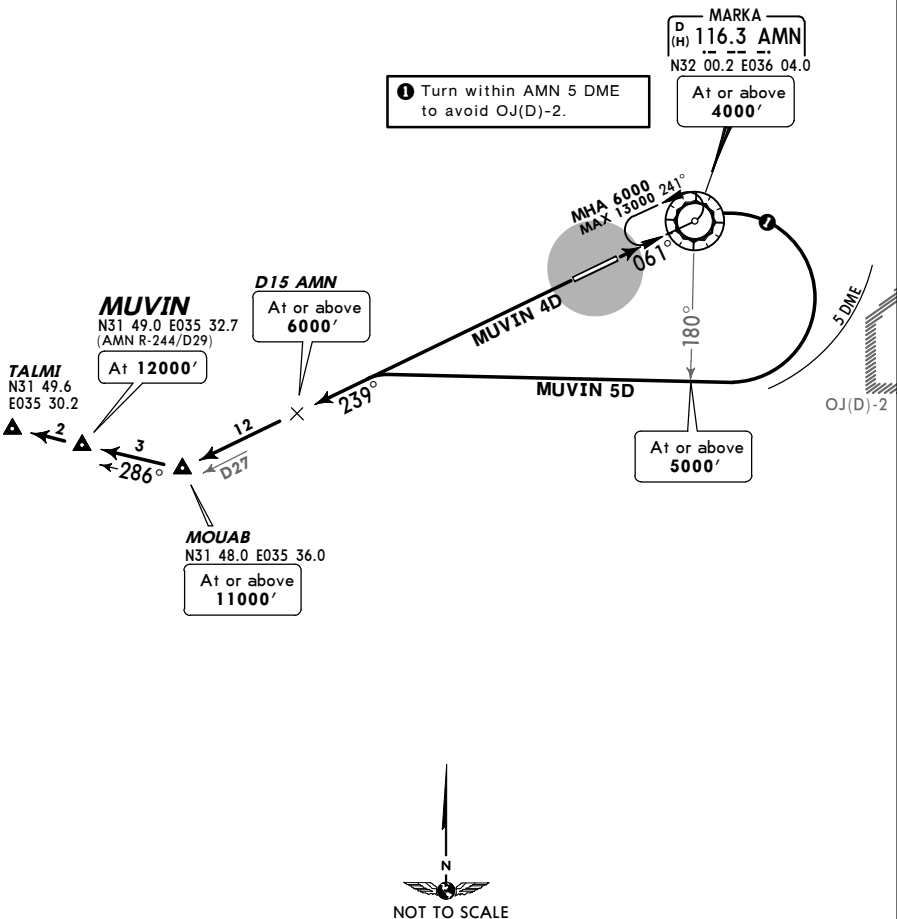
OJAM/ADJ
MARKA INTL

JEPPESEN
6 DEC 13 **10-3C** Eff 12 Dec

AMMAN, JORDAN
SID

TEL AVIV Control 121.4 132.05	Apt Elev 2555'	Trans level: FL150 Trans alt: 13000' 1. Aircraft unable to achieve SID profile restrictions must request non-standard departure clearance on start-up. 2. If unable to comply with SID profile restrictions after take-off carry out following contingency: turn LEFT or RIGHT, as appropriate, at 5000' to enter AMN holding pattern. Advise ATC immediately the contingency is commenced.	 <p>5400'</p> <p>MSA ARP</p>
---	--------------------------	---	--

MUVIN 4D [MUVI4D]
MUVIN 5D [MUVI5D]
RWYS 24, 06 DEPARTURES
 BY ATC



Call TEL AVIV Control as early as possible, and in any case do not cross 10 NM EAST of TALMI without established contact.

SID	RWY	ROUTING
MUVIN 4D	24	Climb on runway heading to MOUAB, turn RIGHT to MUVIN, then to TALMI.
MUVIN 5D	06	Climb to AMN, turn RIGHT, intercept AMN R-239 to MOUAB, turn RIGHT to MUVIN.

FOR FLIGHT SIMULATION USE ONLY!

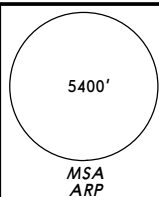
OJAM/ADJ
MARKA INTL

JEPPESEN
 6 DEC 13 **(10-3D)** **Eff 12 Dec**

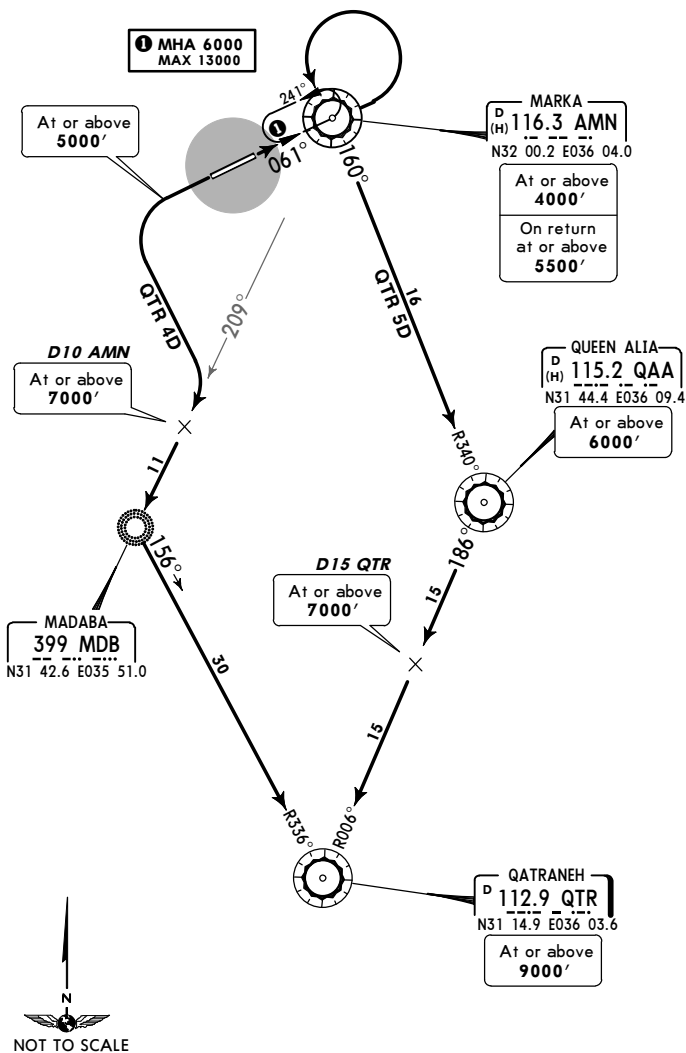
AMMAN, JORDAN
SID

Apt Elev
2555'

- Trans level: FL150 Trans alt: 13000'
1. Aircraft unable to achieve SID profile restrictions must request non-standard departure clearance on start-up.
 2. If unable to comply with SID profile restrictions after take-off carry out following contingency: turn LEFT or RIGHT, as appropriate, at 5000' to enter AMN holding pattern. Advise ATC immediately the contingency is commenced.



QTR 4D, QTR 5D
RWYS 24, 06 DEPARTURES



FOR FLIGHT SIMULATION USE ONLY!

SID	RWY	ROUTING
QTR 4D	24	Climb on runway heading to 5000', turn LEFT, intercept AMN R-209 to MDB, QTR R-336 inbound to QTR.
QTR 5D	06	Climb to AMN, turn LEFT to recross AMN, QAA R-340 inbound to QAA, turn RIGHT, QTR R-006 inbound to QTR.

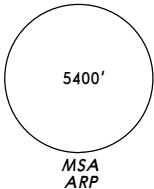
CHANGES: SIDs revised; MSA; chart reindexed.

© JEPPESEN, 2011, 2013. ALL RIGHTS RESERVED.

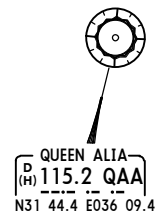
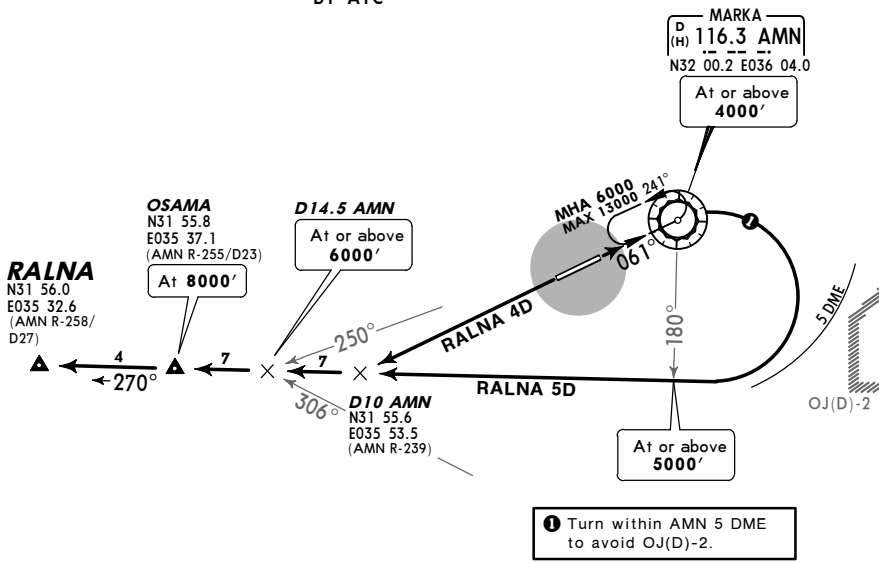
OJAM/ADJ
MARKA INTL

JEPPESEN
 6 DEC 13 **(10-3E)** **Eff 12 Dec**

AMMAN, JORDAN
SID

TEL AVIV Control 121.4 132.05	Apt Elev 2555'	Trans level: FL150 Trans alt: 13000' 1. Aircraft unable to achieve SID profile restrictions must request non-standard departure clearance on start-up. 2. If unable to comply with SID profile restrictions after take-off carry out following contingency: turn LEFT or RIGHT, as appropriate, at 5000' to enter AMN holding pattern. Advise ATC immediately the contingency is commenced.	
--	--------------------------	---	--

RALNA 4D [RALN4D]
RALNA 5D [RALN5D]
RWYS 24, 06 DEPARTURES
 BY ATC



Call TEL AVIV Control as early as possible, and in any case do not cross 10 NM EAST of SALAM without established contact.

SID	RWY	ROUTING
RALNA 4D	24	Climb on runway heading to D10 AMN, turn RIGHT to OSAMA, then to RALNA.
RALNA 5D	06	Climb to AMN, turn RIGHT to OSAMA, then to RALNA.

CHANGES: OSAMA SIDs replaced by RALNA SIDs; MSA.

FOR FLIGHT SIMULATION USE ONLY!

OJAM/ADJ
MARKA INTL

JEPPESSEN

6 DEC 13

10-3F

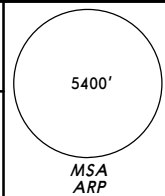
Eff 12 Dec

AMMAN, JORDAN

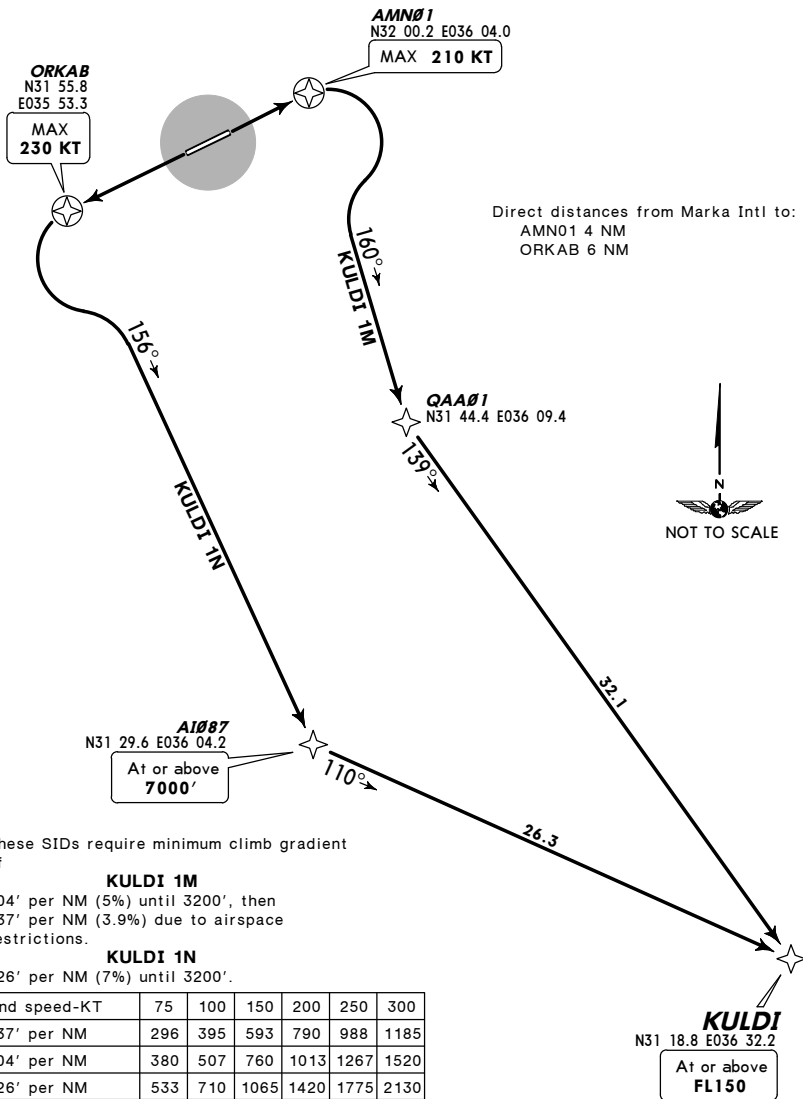
RNAV SID

Apt Elev
2555'

Trans level: FL150 Trans alt: 13000'
1. No turns before DER.
2. RWY 06: (CIO) Close-in obstacle: 2537' building, 655' right of RCL, 1090' from DER.



KULDI 1M [KULD1M], KULDI 1N [KULD1N]
RWYS 06, 24 RNAV DEPARTURES
RNAV 1 (GNSS)
DME/DME NOT AUTHORIZED



These SIDs require minimum climb gradient of

KULDI 1M

304' per NM (5%) until 3200', then 237' per NM (3.9%) due to airspace restrictions.

KULDI 1N

426' per NM (7%) until 3200'.

Gnd speed-KT	75	100	150	200	250	300
237' per NM	296	395	593	790	988	1185
304' per NM	380	507	760	1013	1267	1520
426' per NM	533	710	1065	1420	1775	2130

If unable to comply advise ATC.

SID	RWY	ROUTING
KULDI 1M	06	Climb direct to AMN01, turn RIGHT, 160° track to QAA01, turn LEFT, 139° track to KULDI.
KULDI 1N	24	Climb direct to ORKAB, turn LEFT, 156° track to AI087, turn LEFT, 110° track to KULDI.

FOR FLIGHT SIMULATION USE ONLY!

OJAM/ADJ
MARKA INTL

JEPPESSEN

6 DEC 13

10-3G

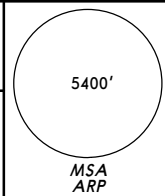
Eff 12 Dec

AMMAN, JORDAN

RNAV SID

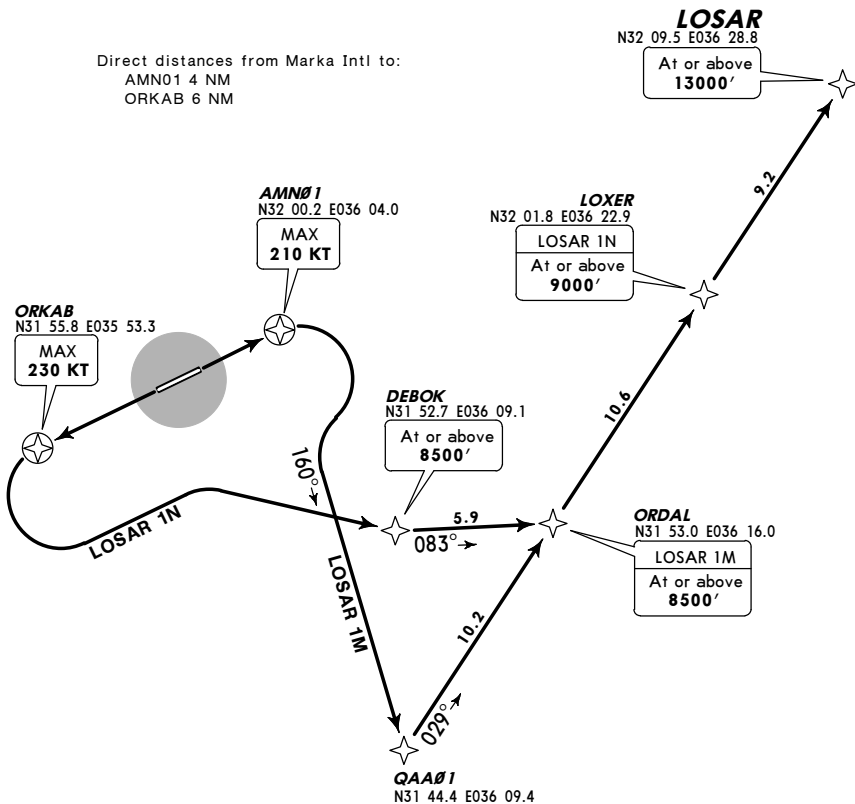
Apt Elev
2555'

Trans level: FL150 Trans alt: 13000'
1. No turns before DER.
2. RWY 06: (CIO) Close-in obstacle: 2537' building, 655' right of RCL, 1090' from DER.



LOSAR 1M [LOSA 1M], LOSAR 1N [LOSA 1N]
RWYS 06, 24 RNAV DEPARTURES
RNAV 1 (GNSS)
DME/DME NOT AUTHORIZED

Direct distances from Marka Intl to:
AMN01 4 NM
ORKAB 6 NM



These SIDs require minimum climb gradient of

LOSAR 1M

304' per NM (5%) until 3200', then 213' per NM (3.5%) due to airspace restrictions.

LOSAR 1N

426' per NM (7%) until 3200'.

Gnd speed-KT	75	100	150	200	250	300
213' per NM	266	355	533	710	888	1065
304' per NM	380	507	760	1013	1267	1520
426' per NM	533	710	1065	1420	1775	2130

If unable to comply advise ATC.



SID	RWY	ROUTING
LOSAR 1M	06	Climb direct to AMN01, turn RIGHT, 160° track to QAA01, turn LEFT, 029° track via ORDAL to LOSAR.
LOSAR 1N	24	Climb direct to ORKAB, turn LEFT direct to DEBOK, 083° track to ORDAL, turn LEFT, 029° track via LOXER to LOSAR.

FOR FLIGHT SIMULATION USE ONLY!

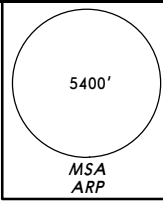
OJAM/ADJ
MARKA INTL

6 DEC 13 **(10-3H)** **EFT 12 Dec**

JEPPESSEN
AMMAN, JORDAN
RNAV SID

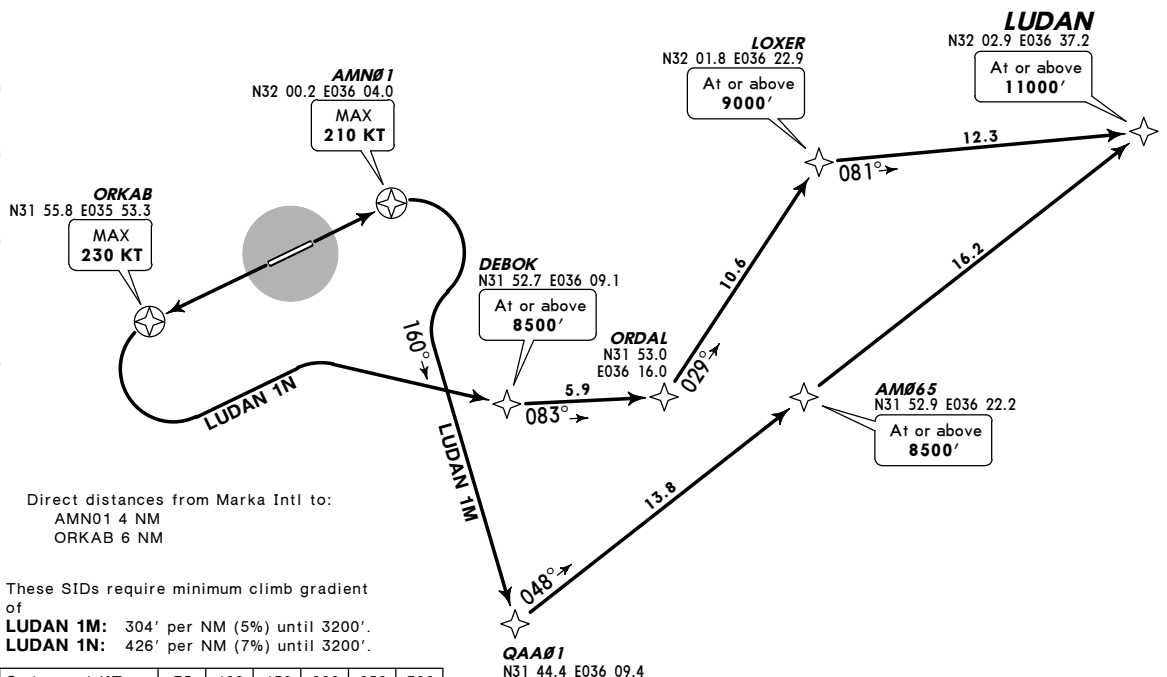
Apr Elev
2555'

- Trans level: FL150 Trans alt: 13000'
 1. No turns before DER.
 2. RWY 06: (CIO) Close-in obstacle: 2537' building, 655' right of RCL, 1090' from DER.



LUDAN 1M [LUDA1M], LUDAN 1N [LUDA1N]
RWYS 06, 24 RNAV DEPARTURES
 RNAV 1 (GNSS)

DME/DME NOT AUTHORIZED



Direct distances from Marka Intl to:
 AMN01 4 NM
 ORKAB 6 NM

These SIDs require minimum climb gradient of
LUDAN 1M: 304' per NM (5%) until 3200'.
LUDAN 1N: 426' per NM (7%) until 3200'.

Gnd speed-KT	75	100	150	200	250	300
304' per NM	380	507	760	1013	1267	1520
426' per NM	533	710	1065	1420	1775	2130

SID	RWY	ROUTING
LUDAN 1M	06	Climb direct to AMN01, turn RIGHT, 160° track to QAA01, turn LEFT, 048° track via AM065 to LUDAN.
LUDAN 1N	24	Climb direct to ORKAB, turn LEFT direct to DEBOK, 083° track to ORDAL, turn LEFT, 029° track to LOXER, turn RIGHT, 081° track to LUDAN.

FOR FLIGHT SIMULATION USE

CHANGES: New procedures at this airport.

© JEPPESSEN, 2013. ALL RIGHTS RESERVED.

OJAM/ADJ
MARKA INTL

JEPPESSEN

6 DEC 13

(10-3J)

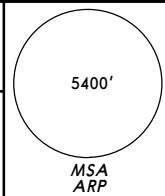
Eff 12 Dec

AMMAN, JORDAN

RNAV SID

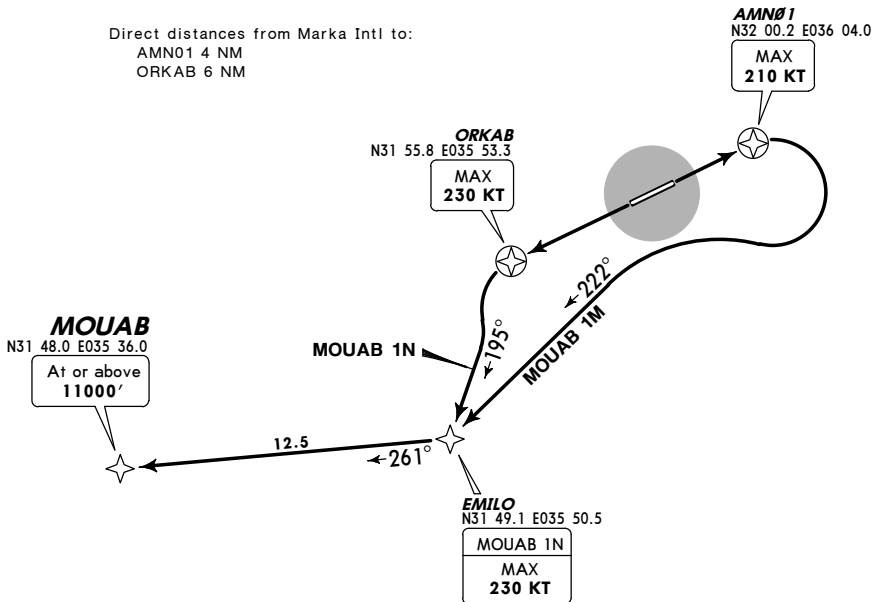
Apt Elev
2555'

- Trans level: FL150 Trans alt: 13000'
1. No turns before DER.
 2. RWY 06: (CIO) Close-in obstacle: 2537' building, 655' right of RCL, 1090' from DER.



MOUAB 1M [MOUA1M], MOUAB 1N [MOUA1N]
RWYS 06, 24 RNAV DEPARTURES
 RNAV 1 (GNSS)
 DME/DME NOT AUTHORIZED

Direct distances from Marka Intl to:
 AMN01 4 NM
 ORKAB 6 NM



These SIDs require minimum climb gradient of

MOUAB 1M

304' per NM (5%) until 3200', then
 267' per NM (4.4%) due to airspace restrictions

MOUAB 1N

426' per NM (7%) until 3200', then
 346' per NM (5.7%) due to airspace restrictions

Gnd speed-KT	75	100	150	200	250	300
267' per NM	334	445	668	890	1113	1335
304' per NM	380	507	760	1013	1267	1520
346' per NM	433	577	865	1153	1442	1730
426' per NM	533	710	1065	1420	1775	2130



If unable to comply advice ATC.

SID	RWY	ROUTING
MOUAB 1M	06	Climb direct to AMN01, turn RIGHT, 222° track to EMILO, turn RIGHT, 261° track to MOUAB.
MOUAB 1N	24	Climb direct to ORKAB, turn LEFT, 195° track to EMILO, turn RIGHT, 261° track to MOUAB.

FOR FLIGHT SIMULATION USE ONLY!

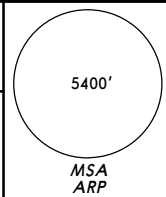
OJAM/ADJ
MARKA INTL

JEPPESSEN
 6 DEC 13 **(10-3K)** **Eff 12 Dec**

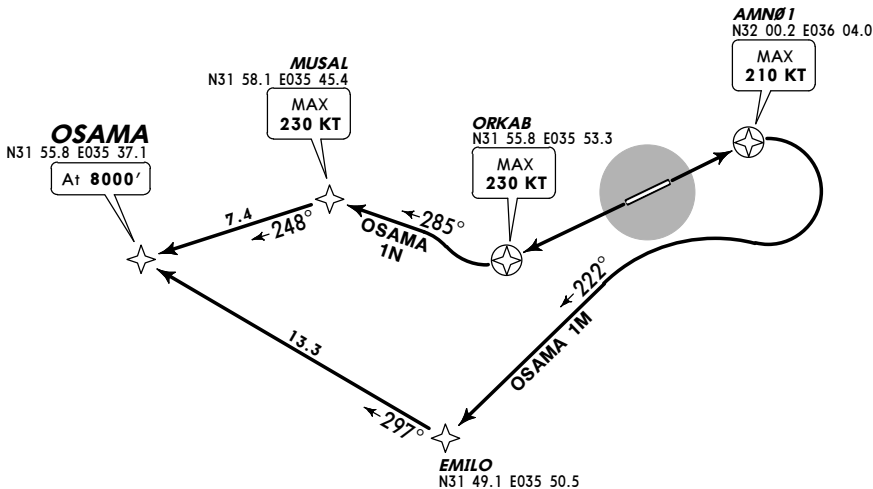
AMMAN, JORDAN
RNAV SID

Apt Elev
2555'

Trans level: FL150 Trans alt: 13000'
 1. No turns before DER.
 2. RWY 06: (CIO) Close-in obstacle: 2537' building, 655' right of RCL, 1090' from DER.



OSAMA 1M [OSAM1M], OSAMA 1N [OSAM1N]
RWYS 06, 24 RNAV DEPARTURES
 RNAV 1 (GNSS)
 DME/DME NOT AUTHORIZED



Direct distances from Marka Intl to:
 AMN01 4 NM
 ORKAB 6 NM

These SIDs require minimum climb gradient of

OSAMA 1M
 304' per NM (5%) until 3200'.
OSAMA 1N
 426' per NM (7%) until 3200', then
 273' per NM (4.5%) due to airspace
 restrictions.

Gnd speed-KT	75	100	150	200	250	300
273' per NM	341	455	683	910	1138	1365
304' per NM	380	507	760	1013	1267	1520
426' per NM	533	710	1065	1420	1775	2130

If unable to comply advise ATC.



SID	RWY	ROUTING
OSAMA 1M	06	Climb direct to AMN01, turn RIGHT, 222° track to EMILO, turn RIGHT, 297° track to OSAMA.
OSAMA 1N	24	Climb direct to ORKAB, turn RIGHT, 285° track to MUSAL, turn LEFT, 248° track to OSAMA.

FOR FLIGHT SIMULATION USE ONLY!

OJAM/ADJ
MARKA INTL

JEPPESSEN

6 DEC 13

(10-3L)

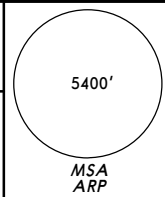
Eff 12 Dec

AMMAN, JORDAN

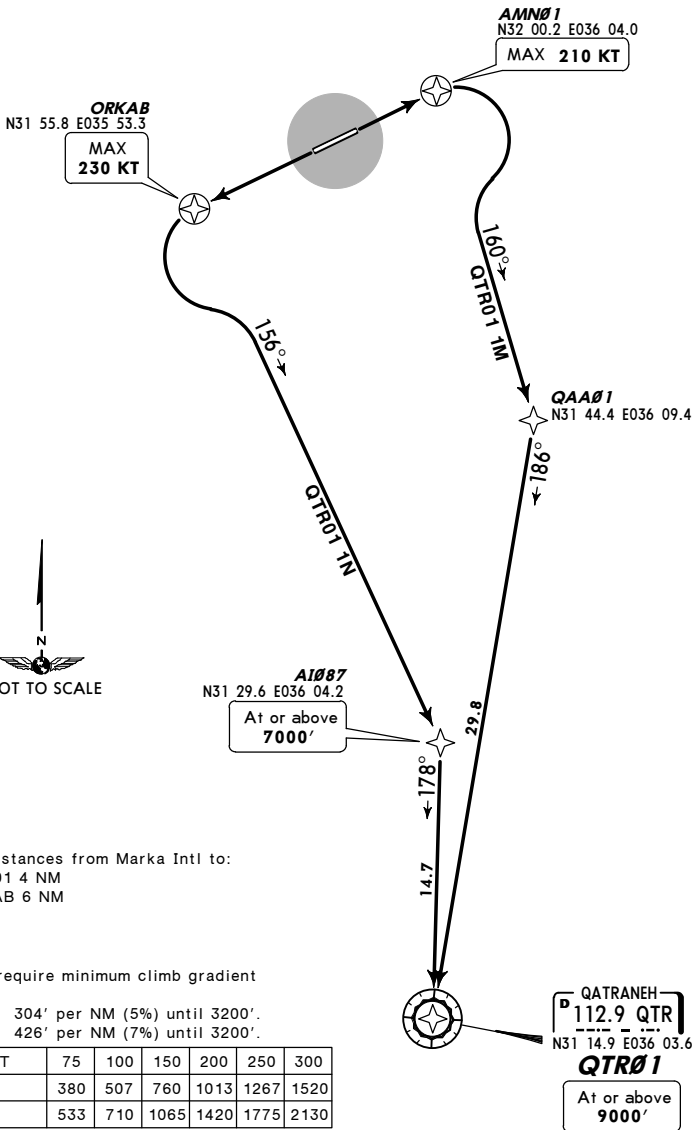
RNAV SID

Apt Elev
2555'

Trans level: FL150 Trans alt: 13000'
 1. No turns before DER.
 2. RWY 06: (CIO) Close-in obstacle: 2537' building,
 655' right of RCL, 1090' from DER.



QTR01 1M [QTR01M], QTR01 1N [QTR01N]
RWYS 06, 24 RNAV DEPARTURES
 RNAV 1 (GNSS)
 DME/DME NOT AUTHORIZED



SID	RWY	ROUTING
QTR01 1M	06	Climb direct to AMN01, turn RIGHT, 160° track to QAA01, turn RIGHT, 186° track to QTR01.
QTR01 1N	24	Climb direct to ORKAB, turn LEFT, 156° track to AI087, turn RIGHT, 178° track to QTR01.

CHANGES: New procedures at this airport.

© JEPPESSEN, 2013. ALL RIGHTS RESERVED.

FOR FLIGHT SIMULATION USE ONLY!

OJAM/ADJ

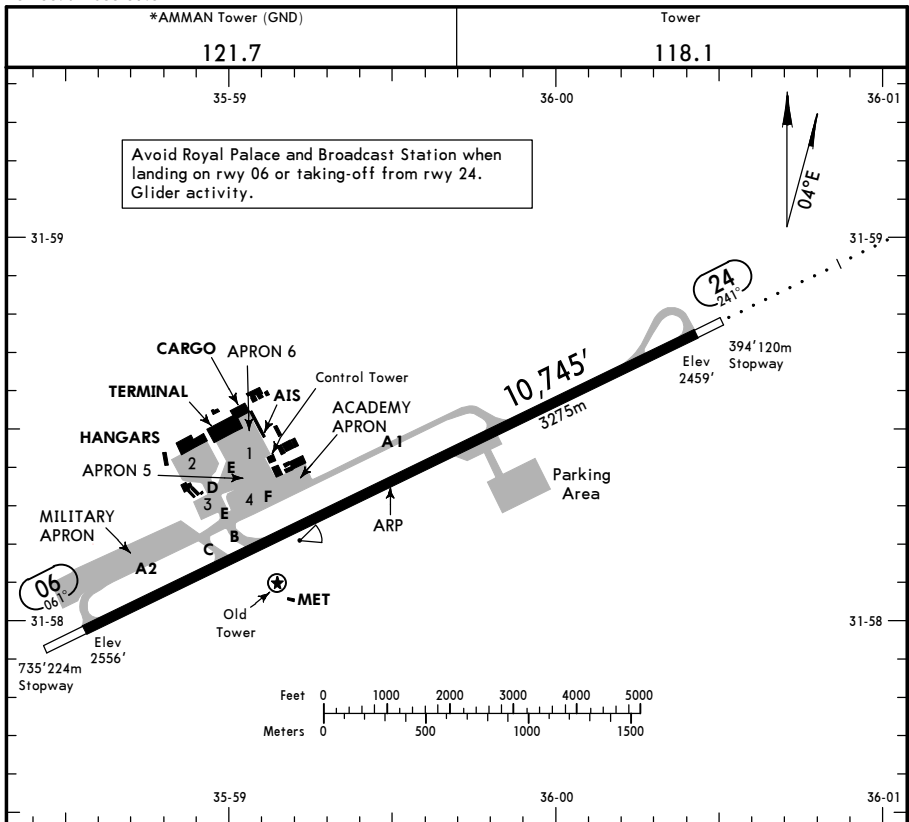
Apt Elev **2556'**
 NS1 58.4 E035 59.5

JEPPESSEN

15 MAY 15 (10-9)

AMMAN, JORDAN

MARKA INTL



ADDITIONAL RUNWAY INFORMATION

RWY		RVR	USABLE LENGTHS		TAKE-OFF	WIDTH
			Threshold	Landing Beyond Glide Slope		
06	HIRL REIL PAPI-L (3.0°)	RVR				148'
24	HIRL HIALS PAPI-L (3.0°)	RVR		9774' 2979m		45m

NOISE ABATEMENT PROCEDURE

Acf of AUW more than 5700kg departing from rwy 24 shall climb with take-off thrust of 4000' at V2+10KT. At 4000' QNH reduce to climb thrust and continue at V2+10KT. At 5500' QNH accelerate to normal take-off speed.

TAKE-OFF

AIR CARRIER (JAA)
All Rwys

RCLM (DAY only)
 or RL

A	RVR 400m VIS 1500m
B	RVR 400m VIS 800m
C	RVR 400m VIS 800m
D	RVR 400m VIS 800m

FOR FLIGHT SIMULATION USE ONLY!

OJAM/ADJ

JEPPESEN

Standard

6 DEC 13

10-9S

Eff 12 Dec

AMMAN, JORDAN
MARKA INTL

STRAIGHT-IN RWY		A	B	C	D
06	RNAV (LNAV/VNAV)	3380'(824') R1500m	3380'(824') R1500m	3380'(824') R2400m	3380'(824') R2400m
	RNAV (LNAV) ①	3480'(924') R1500m	3480'(924') R1500m	3480'(924') R2400m	3480'(924') R2400m
24	ILS FULL	2729'(270') R600m	2739'(280') R600m	2749'(290') R650m	2759'(300') R650m
	Limited	R750m	R750m	R750m	R750m
	ALS out	R1300m	R1300m	R1400m	R1400m
	LOC ①	2850'(391') R1300m	2850'(391') R1300m	2850'(391') R1500m	2850'(391') R1500m
	ALS out	R2000m	R2000m	C2200m	C2200m
	RNAV (LNAV/VNAV)	3120'(661') R1500m	3130'(671') R1500m	3130'(671') R2400m	3130'(671') R2400m
	RNAV (LNAV) ①	3150'(691') R1500m	3150'(691') R1500m	3150'(691') R2400m	3150'(691') R2400m
VOR ①	3260'(801') R1500m	3260'(801') R1500m	3260'(801') C2400m	3260'(801') C2400m	

① Continuous Descent Final Approach.

CIRCLE-TO-LAND ②	100 KT	135 KT	180 KT	205 KT
	4000'(1444') V1500m	4000'(1444') V1600m	4000'(1444') V2400m	4000'(1444') V3600m

② After RNAV apch: NOT AUTHORIZED.

TAKE-OFF RWY 06, 24

	RCLM (DAY only) or RL	NIL (DAY only)
A	RVR 400m	RVR 500m
B	vis 1500m	vis 1500m
C	RVR 400m	RVR 500m
D	vis 800m	vis 800m

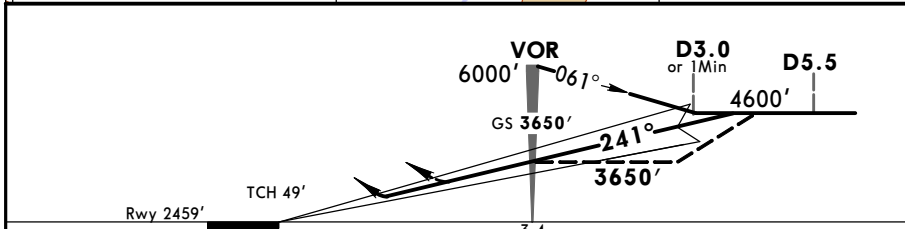
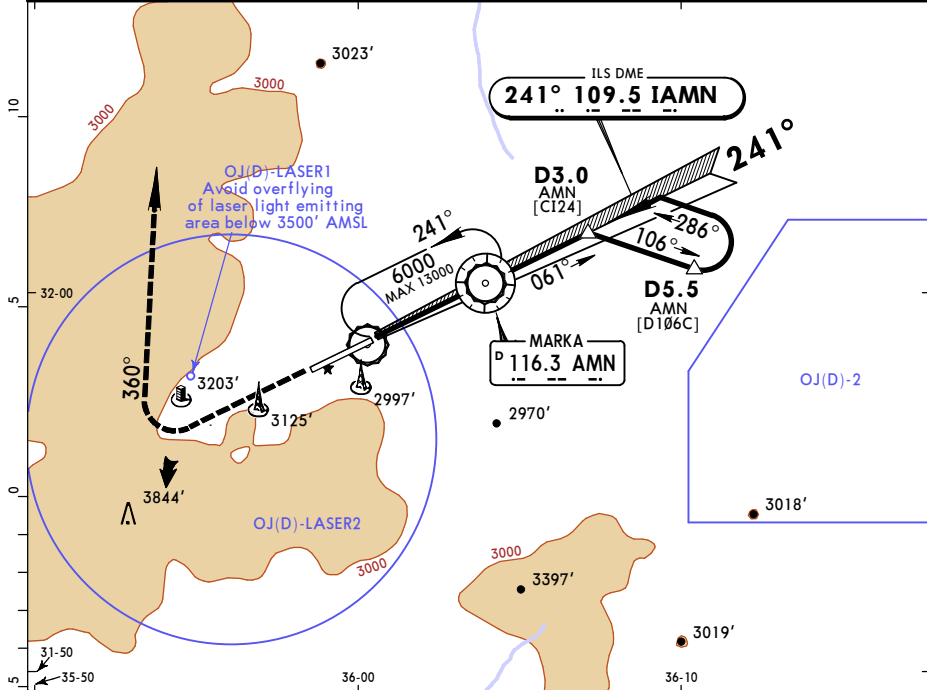
FOR FLIGHT SIMULATION USE ONLY!

OJAM/ADJ MARKA INTL

JEPPESSEN
2 MAR 18 (11-1)

AMMAN, JORDAN ILS Rwy 24

AMMAN Approach 128.9		AMMAN Tower 118.1			*Ground 121.7
LOC IAMN 109.5	Final Aph Crs 241°	GS VOR 3650' (1191')	ILS DA(H) Refer to Minimums	Apt Elev 2556' Rwy 2459'	5400 MSA ARP
MISSED APCH: Climb on rwy heading to 5000', then turn RIGHT onto hdg 360° and contact ATC.					
Alt Set: hPa Rwy Elev: 87 hPa Trans level: FL 150 Trans alt: 13000'					
WARNING: Do not exceed D5.5 AMN before turning to final to avoid OJ(D)-2.					



Gnd speed-Kts	70	90	100	120	140	160	HIALS PAPI	5000' on RWY hdg
ILS GS or LOC Desc Angle	3.00°	372	478	531	637	743		

STRAIGHT-IN LANDING RWY 24 LOC (GS out)				CIRCLE-TO-LAND	
DA(H) A: 2729' (270') C: 2749' (290') B: 2739' (280') D: 2759' (300')		MDA(H) 2850' (391')		Max Kts	
FULL		ALS out		100	4000' (1444') 2000m
900m		1300m		135	4000' (1444') 2400m
A		RVR 720m VIS 800m		180	4000' (1444') 4800m
B		RVR 1500m VIS 1600m		205	
C		1200m			
D		2000m			

PANS OPS

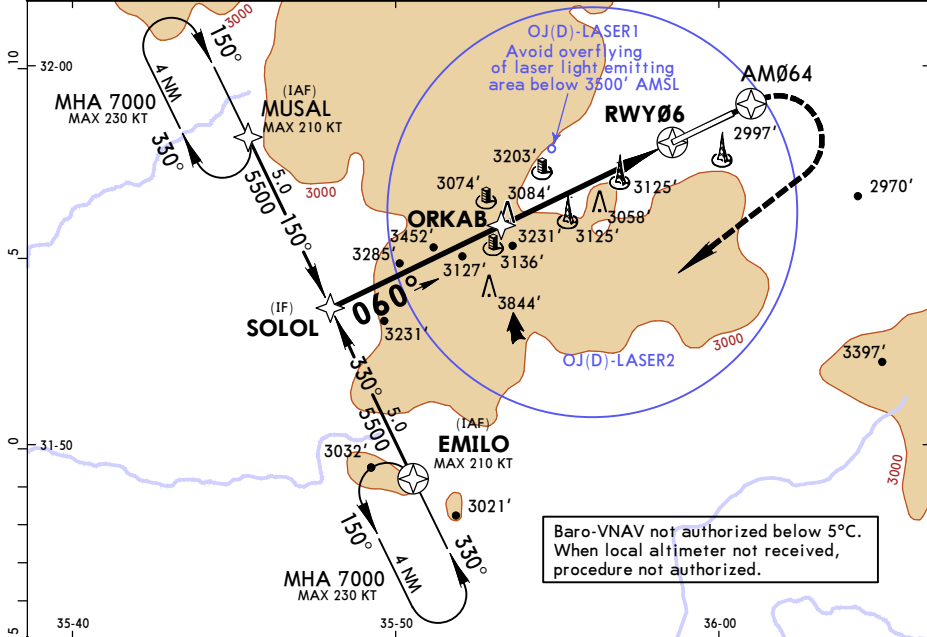
FOR FLIGHT SIMULATION USE ONLY!

OJAM/ADJ
MARKA INTL

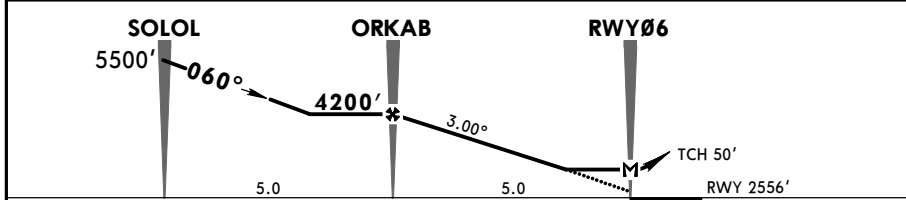
JEPPESSEN
2 MAR 18 (12-1)

AMMAN, JORDAN
RNAV (GNSS) Rwy 06

AMMAN Approach 128.9		AMMAN Tower 118.1		*Ground 121.7	
RNAV	Final ApcH Crs 060°	Minimum Alt ORKAB 4200' (1644')	LNAV/VNAV DA(H) 3380' (824')	Apt Elev 2556'	5400
MISSED APCH: Climb to 7000'. Direct to AM064, then turn RIGHT (MAX 210 KT) direct to EMILO and hold. No turn before MAP.				Rwy 2556'	
Alt Set: hPa		Rwy Elev: 90 hPa	Trans level: FL 150	Trans alt: 13000'	MSA ARP



DIST to RWY06	4.0	3.0
ALTITUDE	3880'	3565'



Gnd speed-Kts	70	90	100	120	140	160	REIL PAPI-L	→ AM064
Descent Angle 3.00°	372	478	531	637	743	849		
MAP at RWY06								

STRAIGHT-IN LANDING RWY 06				CIRCLE-TO-LAND			
LNAV/VNAV DA(H) 3380' (824')		LNAV MDA(H) 3480' (924')					
A	RVR 1500m VIS 1600m			A	NOT AUTHORIZED		
B	2000m			B			
C	4000m			C			
D	4400m			D			

PANS OPS

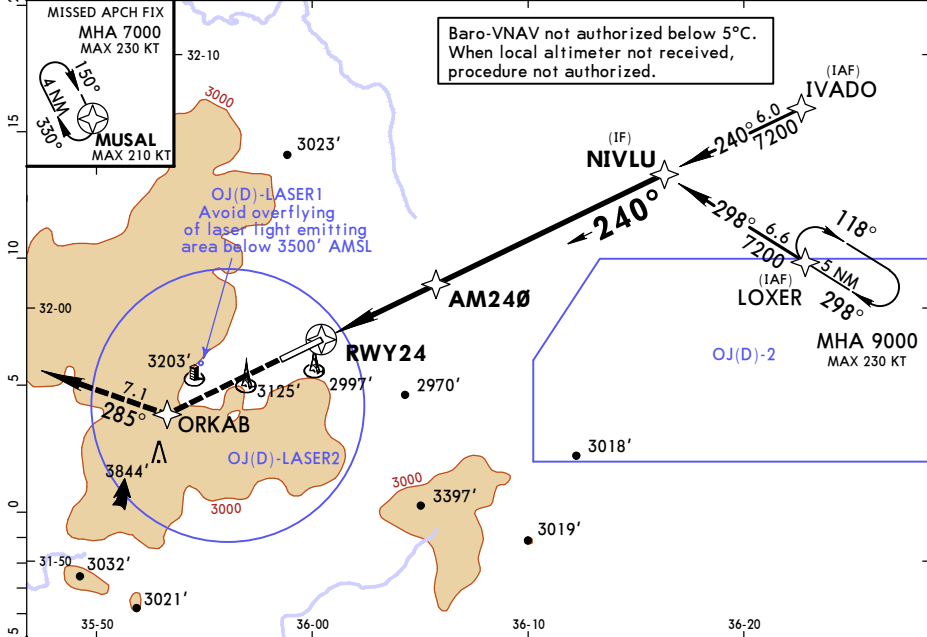
FOR FLIGHT SIMULATION USE ONLY!

OJAM/ADJ
MARKA INTL

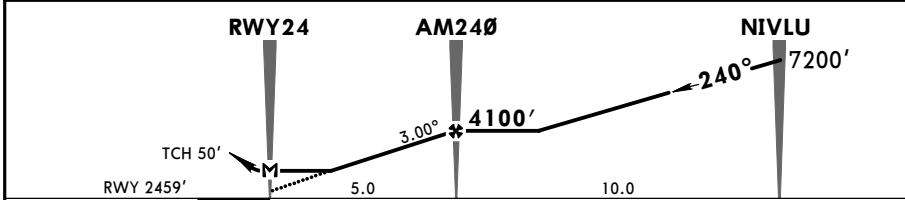
JEPPESSEN
2 MAR 18 **(12-2)**

AMMAN, JORDAN
RNAV (GNSS) Rwy 24

AMMAN Approach 128.9		AMMAN Tower 118.1			*Ground 121.7
RNAV	Final ApcH Crs 240°	Minimum Alt AM240 4100' (1641')	LNNAV/VNAV DA(H) Refer to Minimums	Apt Elev 2556' Rwy 2459'	5400
MISSED APCH: Climb to 7000'. Direct to ORKAB at or above 4900', then turn RIGHT on 285° to MUSAL and hold. No turn before MAP.					
Alt Set: hPa		Rwy Elev: 87 hPa	Trans level: FL 150	Trans alt: 13000'	MSA ARP



DIST to RWY24	2.0	3.0	4.0
ALTITUDE	3150'	3465'	3785'



Gnd speed-Kts	70	90	100	120	140	160	HIALS PAPI
Descent Angle 3.00°	372	478	531	637	743	849	
MAP at RWY24							

STRAIGHT-IN LANDING RWY 24				CIRCLE-TO-LAND	
LNNAV/VNAV		LNNAV			
A: 3120' (661')		BCD: 3130' (671')		MDA(H) 3150' (691')	
ALS out		ALS out			
A	RVR 720m	RVR 1500m	RVR 720m	RVR 1500m	NOT AUTHORIZED
B	VIS 800m	VIS 1600m	VIS 800m	VIS 1600m	
C	2400m	3200m	2400m	3200m	
D	2800m	3600m	2800m	3600m	

PANS OPS

FOR FLIGHT SIMULATION USE ONLY!

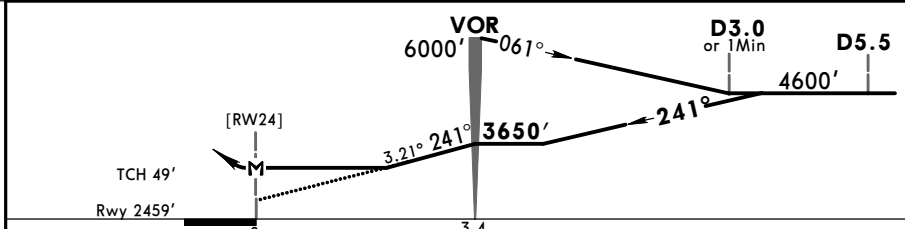
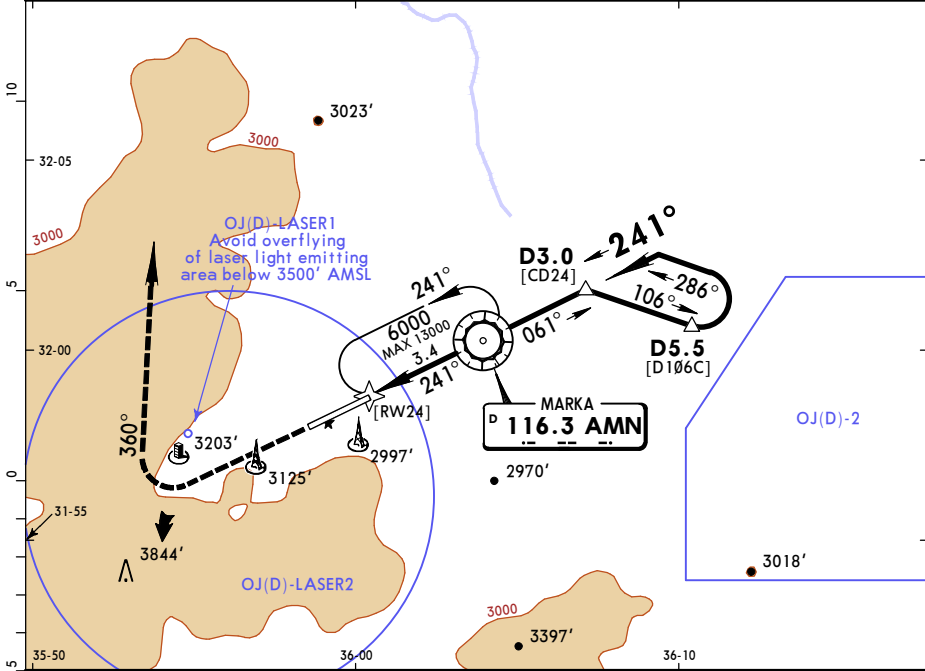
**OJAM/ADJ
MARKA INTL**

JEPPESSEN
2 MAR 18 (13-1)

**AMMAN, JORDAN
VOR Rwy 24**

AMMAN Approach		AMMAN Tower		*Ground		5400
128.9		118.1		121.7		
VOR AMN 116.3	Final Apch Crs 241°	Minimum Alt VOR 3650' (1191')	MDA(H) 3260' (801')	Apt Elev 2556' Rwy 2459'		
MISSED APCH: Climb on rwy heading to 5000', then turn RIGHT onto 360° and contact ATC.						
Alt Set: hPa		Rwy Elev: 87 hPa	Trans level: FL 150	Trans alt: 13000'		MSA ARP
WARNING: Do not exceed D5.5 before turning to final to avoid OJ(D)-2.						

FOR FLIGHT SIMULATION USE ONLY!



Gnd speed-Kts	70	90	100	120	140	160	HIALS PAPI 5000' on RWY hdg
Descent Angle	3.21°	398	511	568	682	795	
VOR to MAP	3.4	2:55	2:16	2:02	1:42	1:27	1:17

STRAIGHT-IN LANDING RWY 24				CIRCLE-TO-LAND		
MDA(H) 3260' (801')				Max Kts	MDA(H)	
ALS out						
A	RVR 720m VIS 800m	RVR 1500m VIS 1600m	100	4000' (1444')	2000m	
B	1200m	2000m	135	4000' (1444')	2400m	
C	2800m	3600m	180	4000' (1444')	4800m	
D	3200m	4000m	205			

PANS OPS