

General Information

Location: KAMISHLY SYR
ICAO/IATA: OSKL / KAC
Lat/Long: N37° 01.84', E041° 12.31'
Elevation: 1430 ft

Airport Use: Public
Daylight Savings: Observed
UTC Conversion: -2:00 = UTC
Magnetic Variation: 4.0° E

Customs: No
Airport Type: IFR
Landing Fee: Yes
Control Tower: Yes
Jet Start Unit: No
LLWS Alert: No
Beacon: Yes

Sunrise: 0324 Z
Sunset: 1437 Z

Runway Information

Runway: 03
Length x Width: 11811 ft x 197 ft
Surface Type: asphalt
TDZ-Elev: 1379 ft
Lighting: Edge, ALS, Centerline, TDZ

Runway: 21
Length x Width: 11811 ft x 197 ft
Surface Type: asphalt
TDZ-Elev: 1482 ft
Lighting: Edge, ALS, Centerline

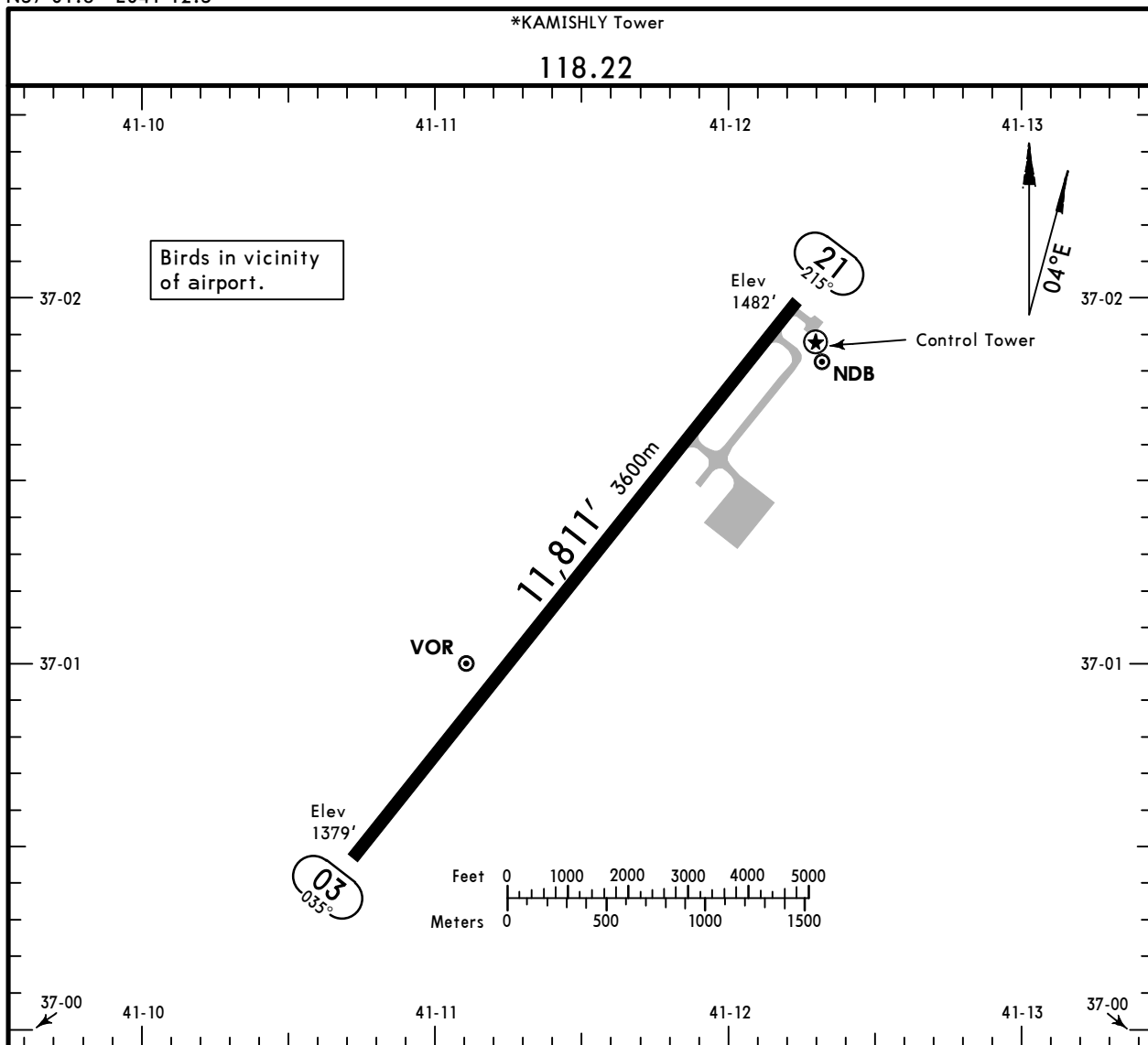
Communication Information

Kamishly Tower: 118.225
Kamishly Tower: 119.100

OSKL/KAC
 Apt Elev **1430'**
 N37 01.8 E041 12.3

JEPPESSEN
 15 MAY 15 **(10-9)**

KAMISHLY, SYRIA
KAMISHLY



ADDITIONAL RUNWAY INFORMATION

RWY					USABLE LENGTHS		TAKE-OFF	WIDTH
	HIRL	CL (white)	① HIALS-II	TDZ	PAPI-L	Threshold		
03			① HIALS-II	TDZ	PAPI-L			197'
21			① HIALS		PAPI-L			60m

① Configuration unknown.

TAKE-OFF

AIR CARRIER (JAA)
All Rwys

LVP must be in force

	RL & CL	RCLM (DAY only) or RL	RCLM (DAY only) or RL
A			
B	200m	250m	400m
C			
D	250m	300m	

OSKL/KAC

 **JEPPESEN**
26 AUG 11 **10-9S**

Standard
KAMISHLY, SYRIA
KAMISHLY

STRAIGHT-IN RWY		A	B	C	D
03	VOR ①	1720'(341') R1500m	1720'(341') R1500m	1750'(371') R1700m	1750'(371') R1700m
	NDB	1900'(521') C2600m	1900'(521') C2600m	1900'(521') C2800m	1900'(521') C2800m

① Continuous Descent Final Approach.

TAKE-OFF RWY 03, 21

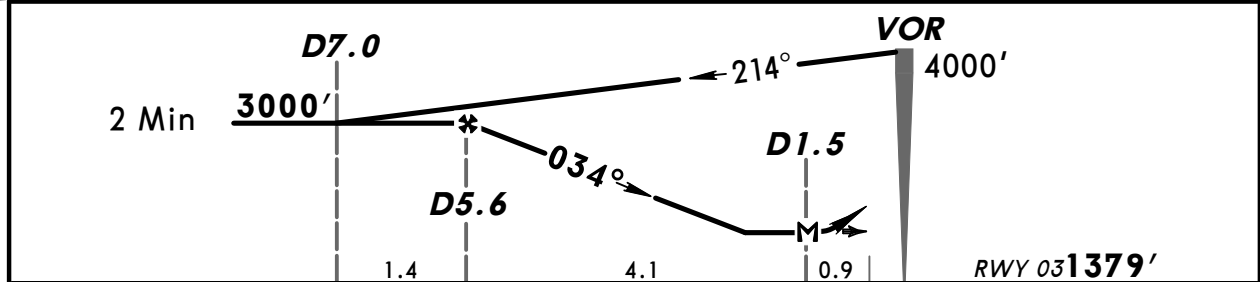
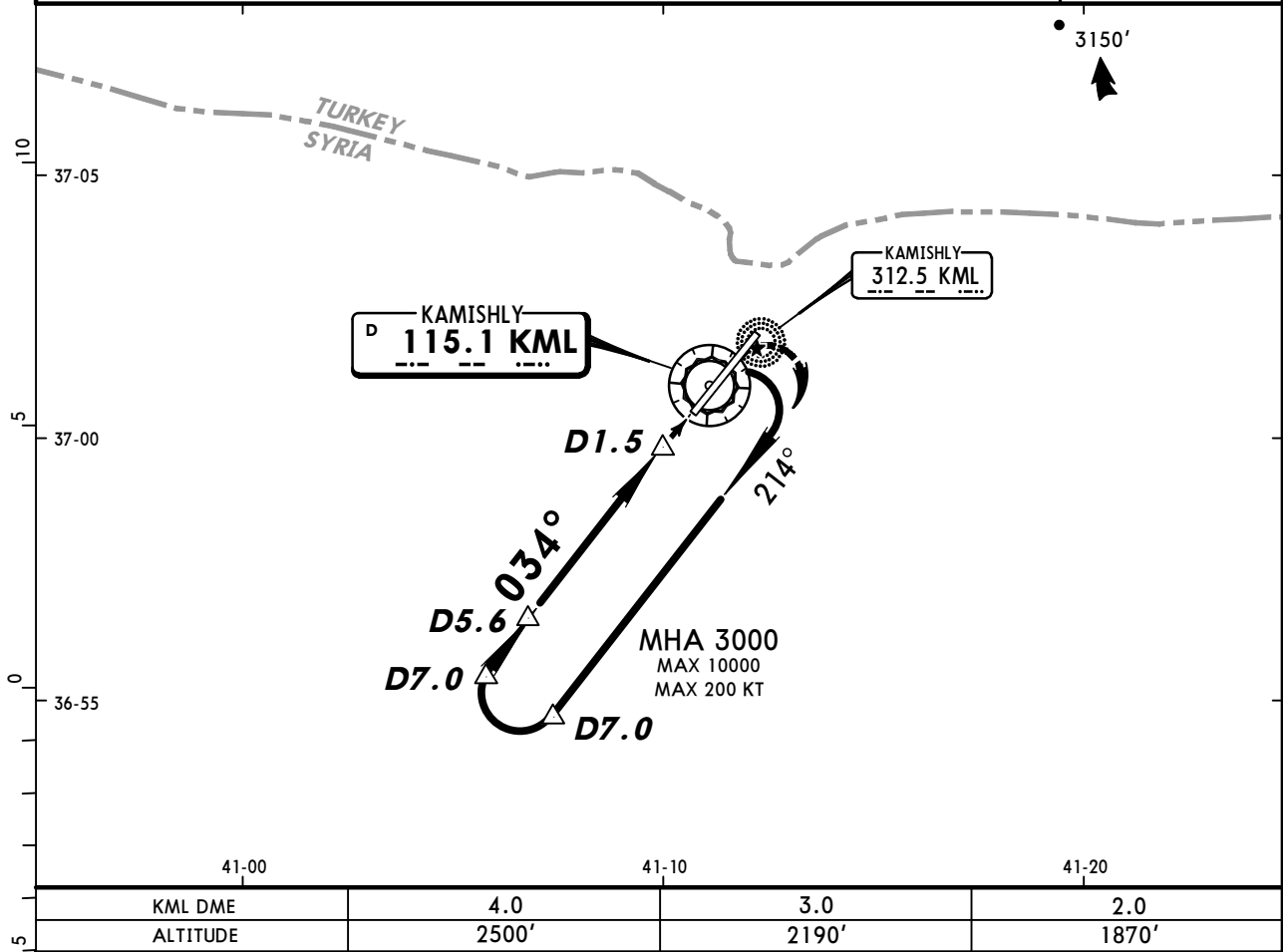
LVP must be in force			
	RCLM (DAY only) or RL	RCLM (DAY only) or RL	NIL (DAY only)
A	250m	400m	500m
B			
C	300m		
D			

OSKL/KAC
KAMISHLY

JEPPESEN
29 OCT 10 (13-1)

KAMISHLY, SYRIA
VOR DME Rwy 03

Approach Control through Tower *KAMISHLY Tower 118.22					
VOR KML 115.1	Final Apch Crs 034°	Minimum Alt D5.6 3000'(1621')	MDA(H) Refer to Minimums	Apt Elev 1430' RWY 1379'	
MISSED APCH: Passing VOR climbing turn RIGHT in holding pattern to 3000' and as directed.					
Alt Set: MB	Rwy Elev: 50 MB	Trans level: FL 150	Trans alt: 13000'		
Procedure restricted to MAX 200 KT.					MSA KML VOR



Gnd speed-Kts	70	90	100	120	140	160	HIALS II PAPI-L	KML 115.1	3000'	in HOLDING PATTERN
Descent angle	3.00°	372	478	531	637	743		↑	RT	
MAP at D1.5										

STRAIGHT-IN LANDING RWY 03		
MDA(H) AB: 1720'(341') CD: 1750'(371')		
ALS out		
A		
B	1600m	
C		
D	2000m	

PANS OPS

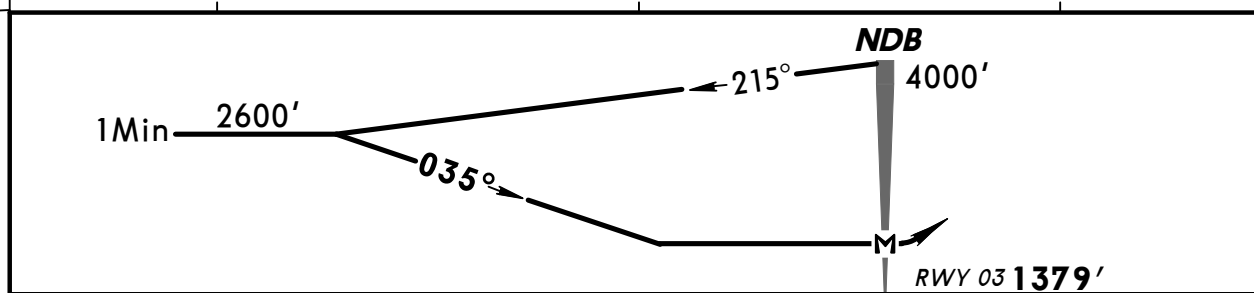
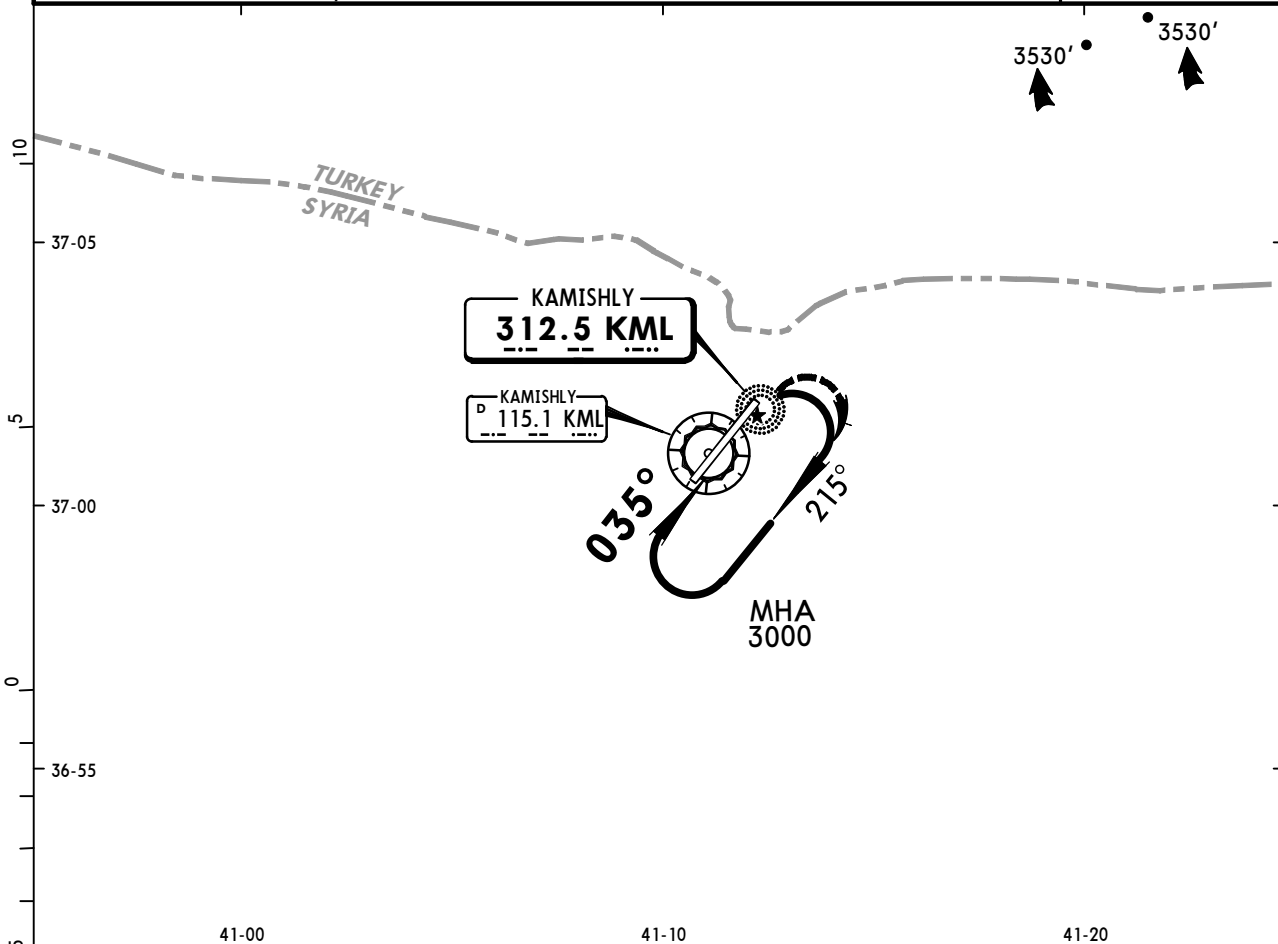
CHANGES: Apt elev. Lights.

OSKL/KAC
KAMISHLY

JEPPESEN
29 OCT 10 **(16-1)**

KAMISHLY, SYRIA
NDB Rwy 03

Approach Control through Tower *KAMISHLY Tower 118.22					
NDB KML 312.5	Final Apch Crs 035°	Minimum Alt No FAF	MDA(H) 1900' (521')	Apt Elev 1430' RWY1379'	
MISSED APCH: Climbing turn RIGHT in holding pattern to 3000' and as directed.					
Alt Set: MB	Rwy Elev: 50 MB	Trans level: FL 150	Trans alt: 13000'	MSA KML NDB	



MAP at NDB				HIALS II PAPI-L		3000'	in	HOLDING PATTERN
------------	--	--	--	-----------------	--	-------	----	-----------------

STRAIGHT-IN LANDING RWY 03	
MDA(H) 1900' (521')	
ALS out	
A	1600m
B	2400m
C	2800m
D	

PANS OPS

Chart changes since cycle 19-2018

ADD = added chart, REV = revised chart, DEL = deleted chart.

ACT	PROCEDURE IDENT	INDEX	REV DATE	EFF DATE
-----	-----------------	-------	----------	----------

KAMISHLY, (KAMISHLY - OSKL)

TERMINAL CHART CHANGE NOTICES

Chart Change Notices for Airport OSKL

Type: Terminal

Effectivity: Temporary

Begin Date: Immediately

End Date: Until Further Notice

(13-1) Confirm MDA(H) VOR DME Rwy 03 with ATC.