

General Information

Location: Deir Zzor Syr
IATA Code: DEZ
Lat/Long: N35° 17.1' E040° 10.6'
Elevation: 700 ft

Airport Use: Public
Magnetic Variation: 4.9°E

Fuel Types: Jet A-1
Repair Types: Minor Airframe, Minor Engine
Customs: Yes
Airport Type: IFR
Landing Fee: Yes
Control Tower: Yes
Jet Start Unit: No
LLWS Alert: No
Beacon: No

Sunrise: 0428 Z
Sunset: 1429 Z,

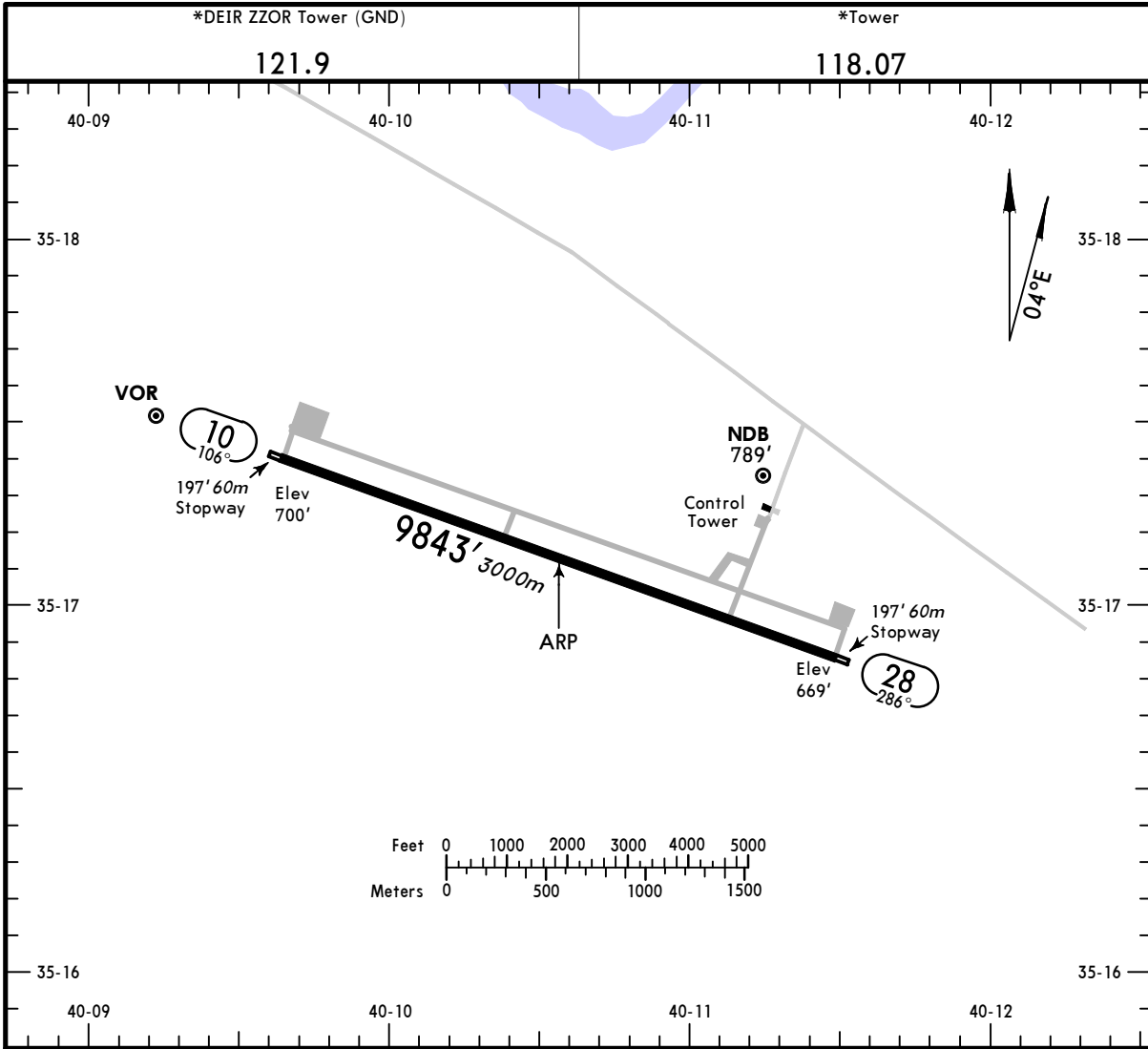
Runway Information

Runway: 10
Length x Width: 9843 ft x 148 ft
Surface Type: asphalt
TDZ-Elev: 700 ft
Lighting: Edge
Stopway: 197 ft

Runway: 28
Length x Width: 9843 ft x 148 ft
Surface Type: asphalt
TDZ-Elev: 669 ft
Lighting: Edge, ALS
Stopway: 197 ft

Communication Information

Deir Zzor Tower 121.9
Deir Zzor Tower 118.075



ADDITIONAL RUNWAY INFORMATION

RWY	Landing Aids	USABLE LENGTHS		TAKE-OFF	WIDTH
		Threshold	Glide Slope		
10	HIRL				148' 45m
28	HIRL ① HIALS PAPI-L				

① Configuration unknown.

TAKE-OFF

	AIR CARRIER (JAA) All Rwys	
	LVP must be in force RCLM (DAY only) or RL	RCLM (DAY only) or RL
A		
B	250m	400m
C		
D	300m	

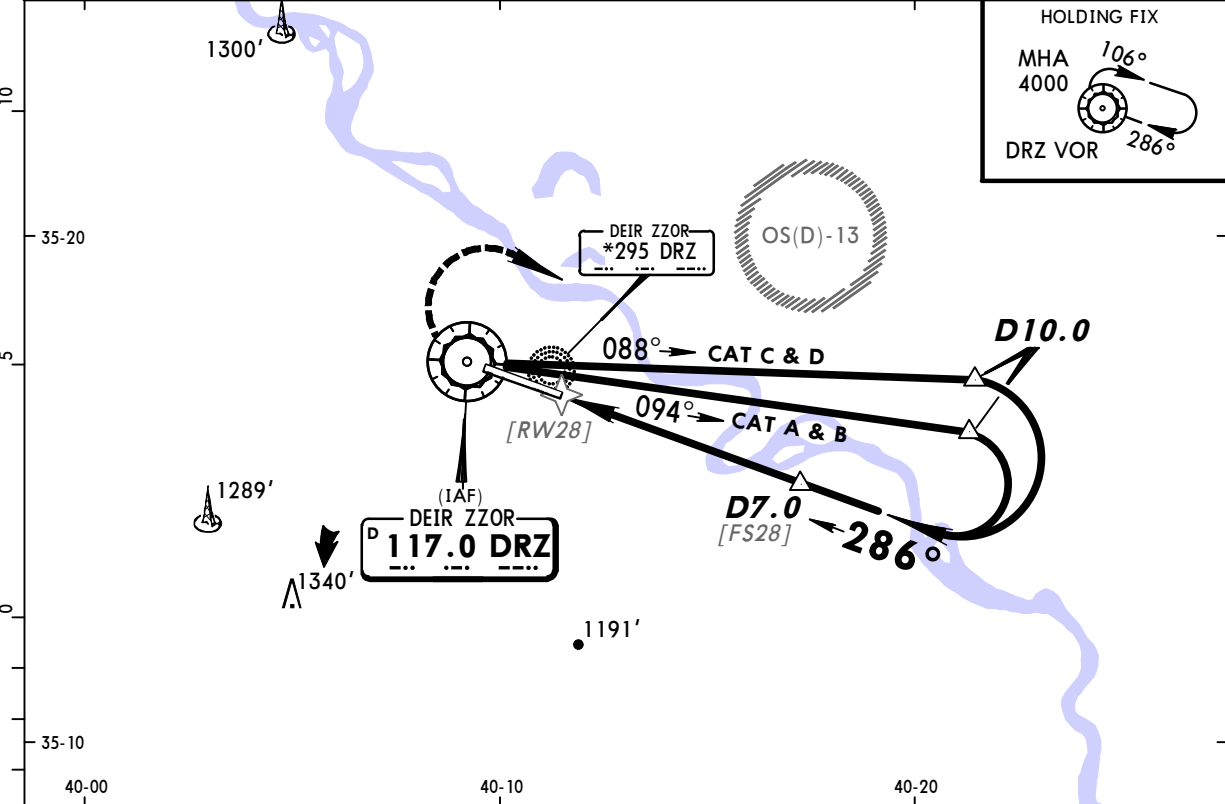
STRAIGHT-IN RWY		A	B	C	D
28	VOR ① ②	1200'(531') R1500m	1200'(531') R1500m	1200'(531') C2400m	1200'(531') C2400m
	NDB	1100'(431') C2200m	1100'(431') C2200m	1100'(431') C2400m	1100'(431') C2400m

- ① Continuous Descent Final Approach.
 ② Missed apch climb gradient mim 3.3%.

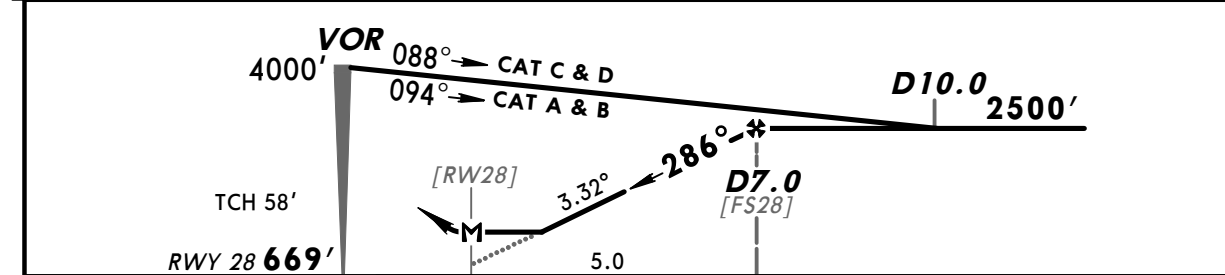
CIRCLE-TO-LAND	A	B	C	D
	NOT AUTHORIZED			

TAKE-OFF RWY 10, 28		
LVP must be in force		
	RCLM (DAY only) or RL	RCLM (DAY only) or RL
A	250m	400m
B		
C	300m	500m
D		

*DEIR ZZOR Tower				*Ground	
118.07				121.9	
VOR DRZ 117.0	Final Apch Crs 286°	Minimum Alt D7.0 2500' (1831')	MDA(H) 1200' (531')	Apt Elev 700'	4000'
RWY 669'					
MISSED APCH: Climb STRAIGHT AHEAD. When reaching VOR turn RIGHT and climb in holding as directed. MAX 185 KT.					
Alt Set: hPa		Rwy Elev: 24 hPa	Trans level: FL 150		Trans alt: 13000'
1. DME required. 2. Procedure restricted to MAX 210 KT.					
					MSA ARP



DRZ DME	4.0	5.0	6.0	7.0
ALTITUDE	1450'	1800'	2150'	2500'

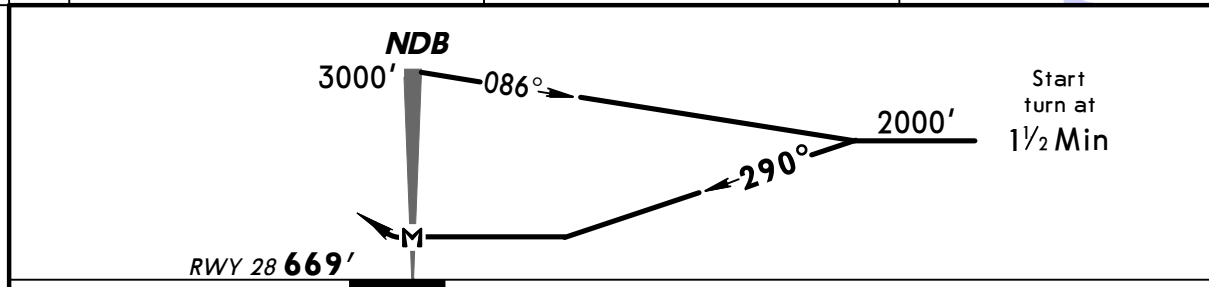
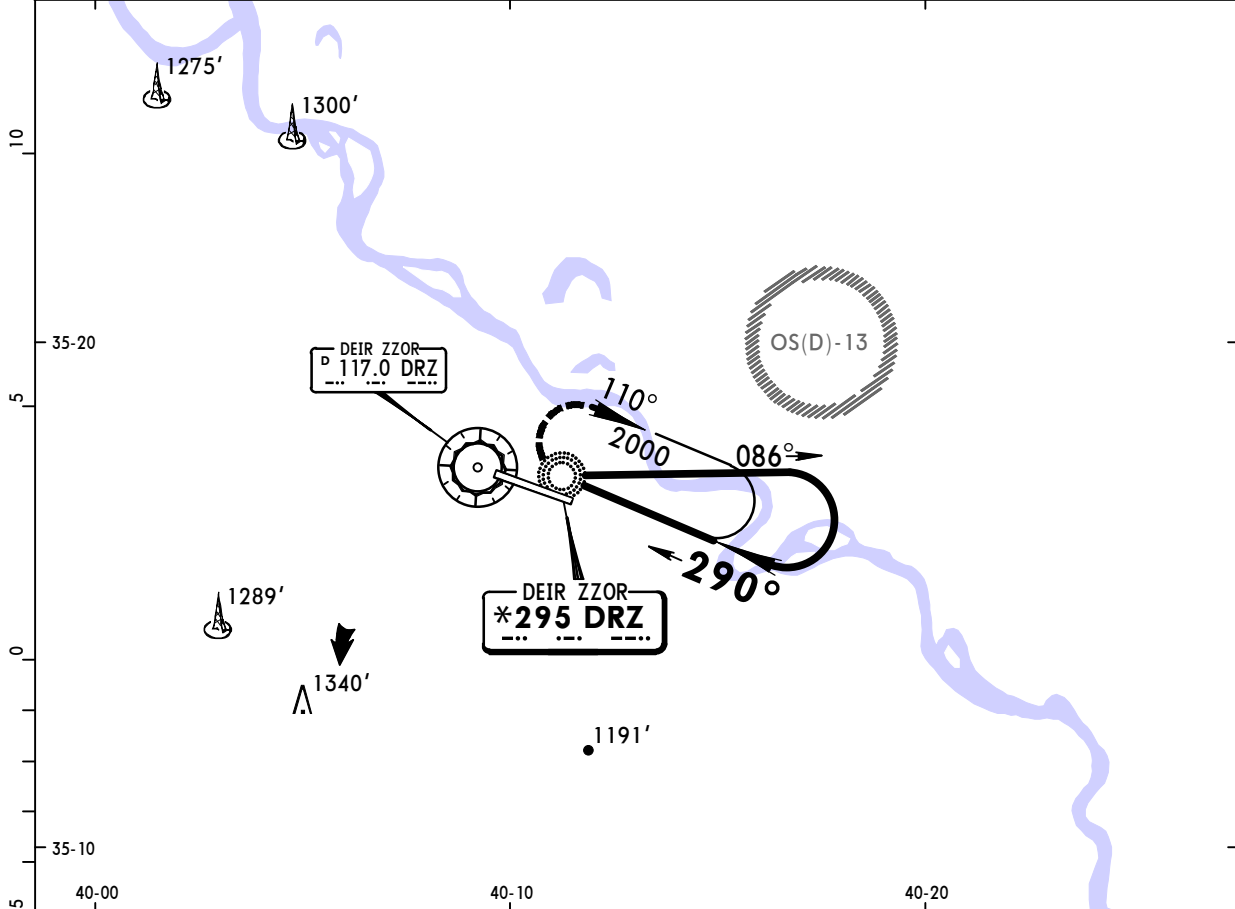


Gnd Speed-Kts	70	90	100	120	140	160	HIALS PAPI-L	185 KT MAX	117.0 DRZ ↑	
Descent Angle	3.32°	411	529	587	705	822				940
FAF to MAP	5.0	4:17	3:20	3:00	2:30	2:09				1:53

STRAIGHT-IN LANDING RWY 28		CIRCLE-TO-LAND	
Missed apch climb gradient mim 3.3%			
MDA(H) 1200' (531')			
ALS out			

A	2400m	A	NOT AUTHORIZED
B		B	
C		C	
D		D	

*DEIR ZZOR Tower 118.07			*Ground 121.9		
NDB DRZ *295	Final Apch Crs 290°	Minimum Alt No FAF	MDA(H) 1100' (431')	Apt Elev 700' RWY 669'	<p>MSA DRZ NDB</p>
MISSED APCH: Turn RIGHT climbing in holding to 3000' and contact ATC.					
Alt Set: hPa		Rwy Elev: 24 hPa	Trans level: FL 150	Trans alt: 13000'	



MAP at NDB				HIALS PAPI-L	110° RT	3000' ↑ in HOLDING
------------	--	--	--	-----------------	-------------------	---------------------------------

STRAIGHT-IN LANDING RWY 28	
MDA(H) 1100' (431')	ALS out

PANS OPS	A	1600m
	B	2000m
	C	2400m
	D	2400m

CHANGES: Altimeter setting.

Chart changes since cycle 26-2014

ADD = added chart, REV = revised chart, DEL = deleted chart.

ACT	PROCEDURE IDENT	INDEX	REV DATE	EFF DATE
-----	-----------------	-------	----------	----------

DEIR ZZOR, (DEIR ZZOR - OSDZ)

TERMINAL CHART CHANGE NOTICES

No Chart Change Notices for Airport OSDZ